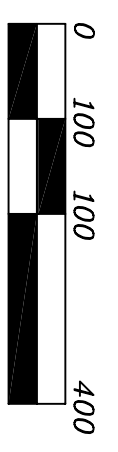


PRELIMINARY PLAT OF SUBDIVISION  
OF  
**PROLOGIS PARK ROCHELLE - UNIT ONE**  
BEING A SUBDIVISION OF PART OF THE NORTHEAST QUARTER OF SECTION 31, THE NORTHWEST QUARTER OF SECTION 32 AND THE NORTHEAST QUARTER OF SECTION 32, TOWNSHIP 40 NORTH, RANGE 2 EAST OF THE THIRD PRINCIPAL MERIDIAN, IN OGLE COUNTY, ILLINOIS.

**COVER SHEET**

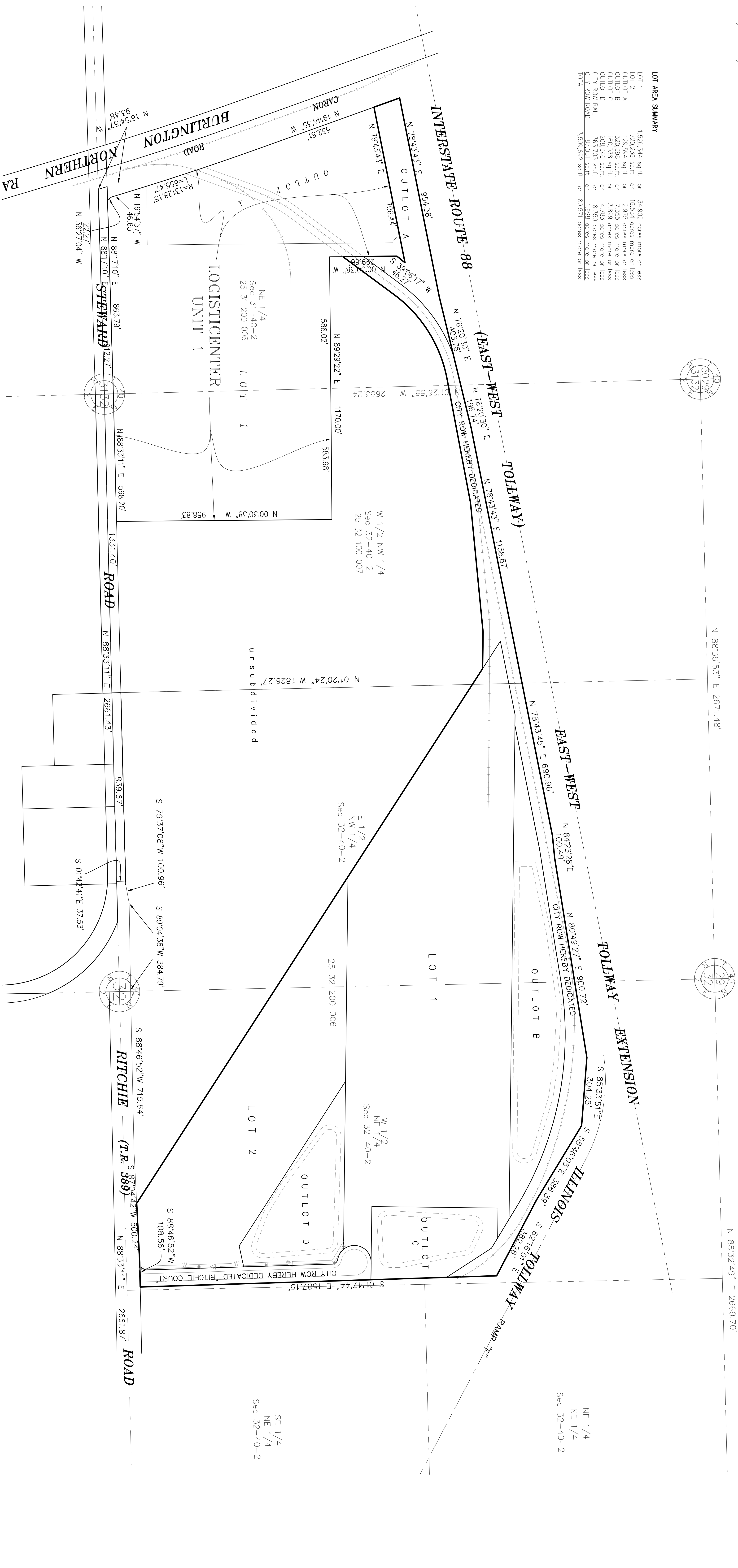
(THE DEVELOPMENT LOCATION MAP BELOW IS PROVIDED FOR ORIENTATION PURPOSES ONLY.  
REFER TO THE ATTACHED SHEETS 2 AND 3 OF 3 OF THIS PLAT FOR DETAILED DATA)



State of Baedger  
MND 83 (1997) Illinois State PlaneCoordinates West Zone  
brought up to Project Ground Coordinates.

**LOT AREA SUMMARY**

|               |   |
|---------------|---|
| LOT 1         | 1,520,344 sq.ft. or 34,902 acres more or less |
| LOT 2         | 720,236 sq.ft. or 16,534 acres more or less   |
| OUTLOT A      | 720,236 sq.ft. or 16,534 acres more or less   |
| OUTLOT B      | 720,236 sq.ft. or 16,534 acres more or less   |
| OUTLOT C      | 150,038 sq.ft. or 3,489 acres more or less    |
| OUTLOT D      | 208,346 sq.ft. or 4,783 acres more or less    |
| CITY ROW RAIL | 363,705 sq.ft. or 8,350 acres more or less    |
| CITY ROW ROAD | 87,031 sq.ft. or 1,998 acres more or less     |
| TOTAL         | 3,509,692 sq.ft. or 80,571 acres more or less |



**JACOB & HERNER ASSOCIATES, INC.**  
ENGINEERS - SURVEYORS  
1000 North Dearborn Street, Suite 180  
Oakbrook Terrace, IL 60181  
(630) 682-4600 FAX (630) 682-4601  
ILLINOIS PROFESSIONAL DESIGN FIRM  
LICENSE NO. 168-008073 EXP. 4/30/11

|                |  |
|----------------|--|
| Survey No.:    | E 1 2 9 e  |
| Ordered By:    | PROLOGIS   |
| Description:   | PROLOGIS PARK ROCHELLE - UNIT ONE<br>Part of Subdivision |
| Date Prepared: | February 22, 2011<br>March 1, 2011                       |
| Scale:         | 1" = 200'  |
| Field Work:    | MM   |
| Prepared By:   | CM   |

H:\E129\E129e5\Draw\Subplot\E129e PrelimSubplot.dwg



