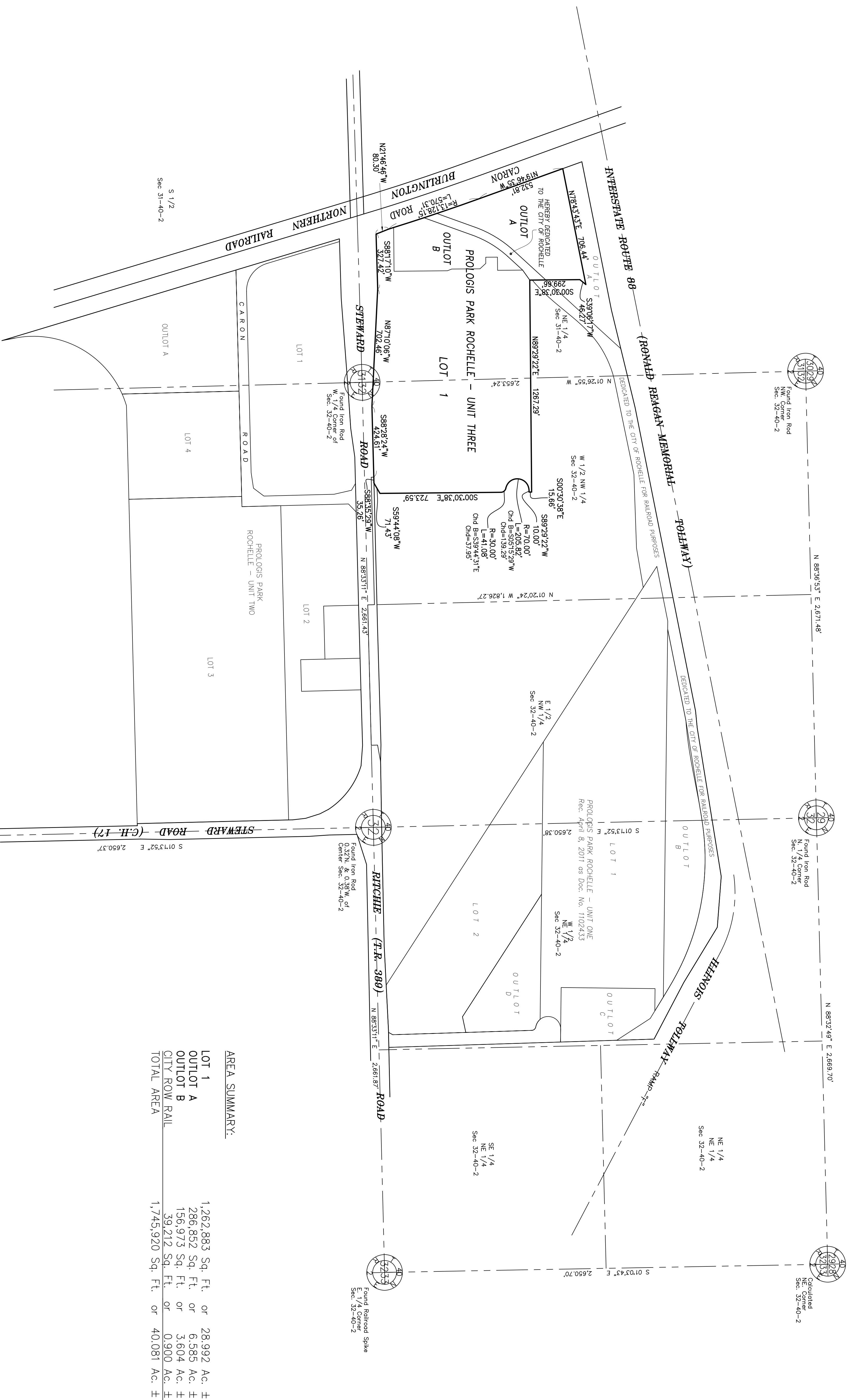


PRELIMINARY PLAT OF SUBDIVISION of PROLOGIS PARK ROCHELLE - UNIT THREE

BEING A SUBDIVISION OF PART OF THE WEST HALF OF THE NORTHWEST QUARTER OF SECTION 32 AND A RESUBDIVISION OF LOGISTCENTER UNIT 1, BEING A SUBDIVISION OF PART OF THE NORTHWEST QUARTER OF SECTION 31 AND THE NORTHEAST QUARTER OF SECTION 31, ALL IN TOWNSHIP 40 NORTH, RANGE 2 EAST OF THE THIRD PRINCIPAL MERIDIAN, IN OGLE COUNTY, ILLINOIS.

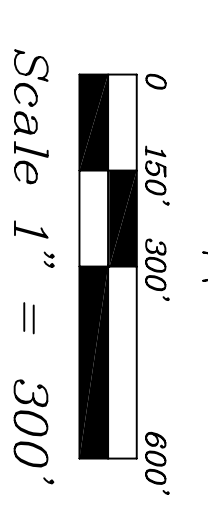
COVER SHEET

THE DEVELOPMENT LOCATION MAP BELOW IS PROVIDED FOR ORIENTATION PURPOSES ONLY.
REFER TO THE ATTACHED SHEETS 2 OF THIS PLAT FOR DETAILED DATA.



AREA SUMMARY:

LOT 1	1,262,883 Sq. Ft.	or	28,992 Ac. ±
OUTLOT A	286,852 Sq. Ft.	or	6,585 Ac. ±
OUTLOT B	156,973 Sq. Ft.	or	3,604 Ac. ±
CITY ROW RAIL	39,212 Sq. Ft.	or	0,900 Ac. ±
TOTAL AREA	1,745,920 Sq. Ft.	or	40,081 Ac. ±



BASIS OF BEARING:
MAD 83 (1997) ILLINOIS STATE PLANE COORDINATES WEST ZONE BROUGHT UP TO PROJECT GROUND COORDINATES.

JACOB & HERPER ASSOCIATES, Inc.
ENGINEERS SURVEYORS
1801 S. Meyers Road, Suite 180
Oakbrook Terrace, IL 60181-665-4601
ILLINOIS PROFESSIONAL DESIGN FIRM
LICENSE NO. 184-003073 EXP. 4/30/11

Survey No.:	E 1 2 9 a
Ordered By:	Prologis
Description:	PROLOGIS PARK ROCHELLE - UNIT THREE
Date Prepared:	June 1, 2011
Field Work:	N/A
Scale:	1" = 300'
Prepared By:	bas/cml

