

ROCHELLE POLICE DEPARTMENT
2011 INDIVIDUAL SEMI ANNUAL ACTIVITY
TOTAL CALLS 5335

OFFICER	#	TOTAL CFS	CRIMINAL ARRESTS	WARRANT ARRESTS	TRAFFIC(T) ARRESTS	WRITTEN(W) WARNINGS	PARKING(P) TICKETS	ORDINANCE VIOLATION
WITTENBERG	8	289	24	7	47	70	3	2
JAKYMIW	9	318	14	11	98	74	1	4
INMAN	10	11	2			1		
BANESKI	11	369	50	15	189	156	46	2
STREIT	31	4						
GERARD	13	372	11	9	31	32	6	5
VANVICKLE	14	302	14	3	33	38	3	
ALBERS	15	33			5	2		
RODABAUGH	16	114	2	2	19	23	6	
KALTENBACH	17	32	14	3	1	3		1
CHRISTOPHERSON	18	192	8	3	24	21		
GOODWIN	19	309	16	10	37	33	3	3
GILLIAM	20	120	20	11	20	31		
ANDERSON	21	292	9	4	26	49	1	
SESTER	30	312	34	6	41	87	3	3
SMITH	22	138	2	2	4	29	1	5
BERGERON	23	114	6	3	8	8	1	
FRANKENBERRY	24	157	3	4	56	52	1	
LEININGER	25	19	1		1	3		
HAAN	26	165	6	1	29	33	2	1
Y	27	10						
TOTAL		3672	236	94	669	745	77	26

**ROCHELLE POLICE DEPARTMENT
SELECTED OFFICER ACTIVITY
SEMI ANNUAL 2011**

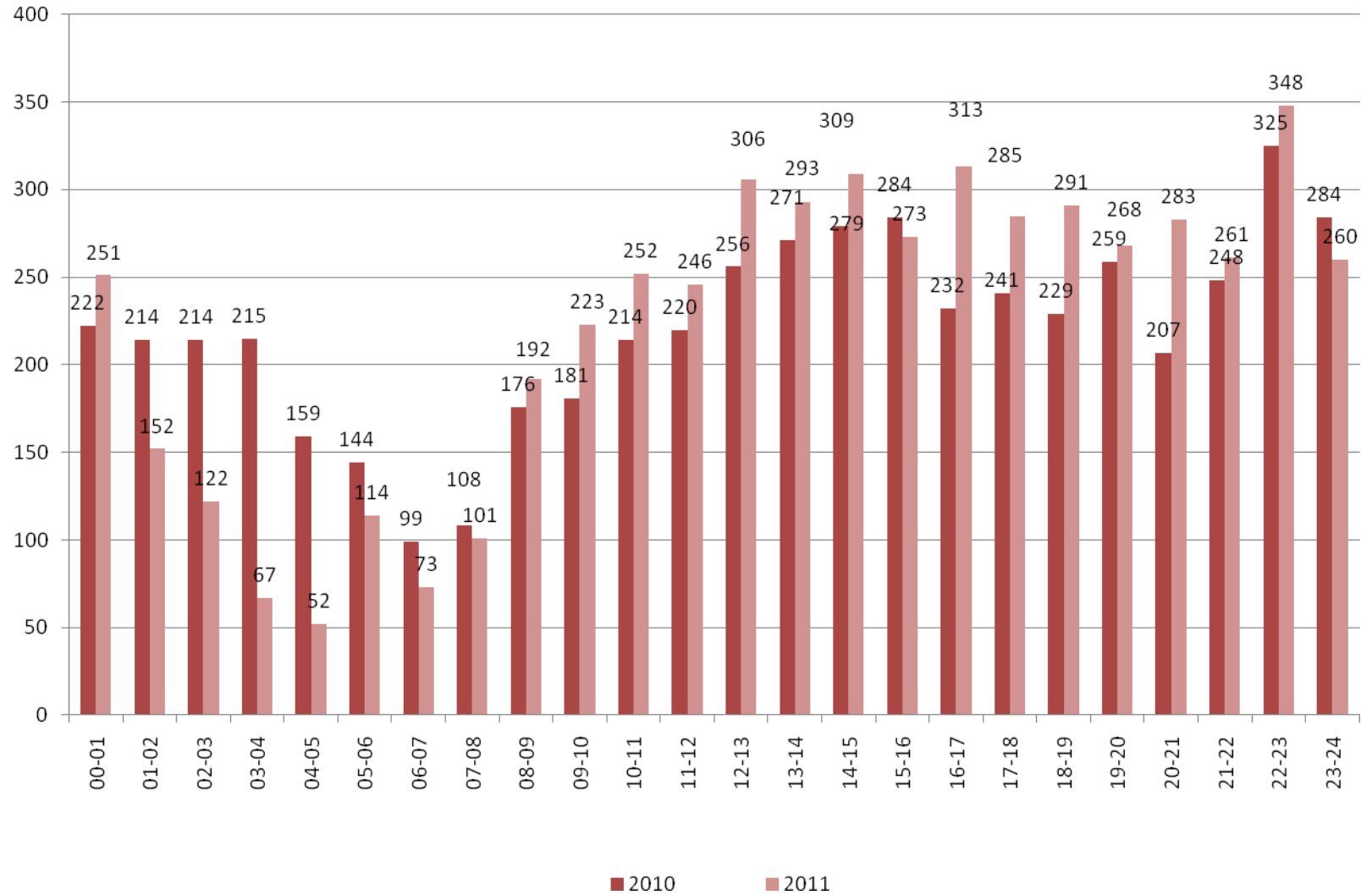
OFFICER	#	DUI	ILLEGAL POSS/CONS	MINOR POSS/CONS	DRUG	SUSP/ REVOKED	INSURANCE	SEAT BELT	SPEEDING	STOP ARM
WITTENBERG	8	10	1	6	6	3	8	1	15	
JAKYMIW	9	3	3	2	3	2	16	1	18	1
INMAN	10								1	
BANESKI	11	17	5	16	15	8	31	2	74	
STREIT	31									
GERARD	13				1		6	1	5	2
VANVICKLE	14				5	1	8	1	17	
ALBERS	15						1		2	
RODABAUGH	16	1				1	2		2	
KALTENBACH	17				1				1	
CHRISTOPHERSON	18	3			1	4	7		1	
GOODWIN	19	1			8	1	4	1	16	
GILLIAM	20	3	2	5	3	1	4			
ANDERSON	21	2	1		2	2	2	1	9	
SESTER	30	2	1	2	4	5	8		1	
SMITH	22								7	1
BERGERON	23				1		2		2	
FRANKENBERRY	24	1	2		3	4	10	2	16	
LEININGER	25								3	
HAAN	26					4	3		16	
HIGBY	27									
TOTAL		43	15	31	53	36	112	10	206	4

ROCHELLE POLICE DEPARTMENT
TIME USAGE
SEMI ANNUAL 2011

OFFICER	OFFICER	VAC	SICK	TRAIN	COURT	O.T./HOLIDAY
	#	HRS	HRS	HRS	HRS	HRS
WITTENBERG	8	20.0	10.0	4.7	10.0	70.0
JAKYMIW	9	90.0	19.0	40.7	4.3	17.0
INMAN	10	100.0	20.0	10.0	4.9	11.0
BANESKI	11			45.1	19.2	23.5
STREIT	31			130.0		
GERARD	13	20.0		11.8	2.7	45.0
VANVICKLE	14	40.0		80.0	3.5	99.0
ALBERS	15		23.5	1.1	8.4	
RODABAUGH	16	40.0	50.0	3.6	2.7	0.5
KALTENBACH	17	80.0		12.3		4.0
CHRISTOPHERSON	18	70.0	20.0			32.0
GOODWIN	19		18.5	15.5	15.9	43.0
GILLIAM	20	70.0		17.2	5.4	66.0
ANDERSON	21			64.7	16.0	56.0
SESTER	30		53.0	24.6	5.3	92.0
SMITH	22	36.0	12.0		5.6	66.5
BERGERON	23	168.0	50.0	4.7	4.9	18.0
FRANKENBERRY	24	106.0	6.0	0.4		41.0
LEININGER	25	40.0	8.0			16.0
HAAN	26	20.0	6.0	8.0	0.5	43.0
HIGBY	27	128.0		15.8		
TOTAL		1028.0	296.0	490.2	109.3	743.5

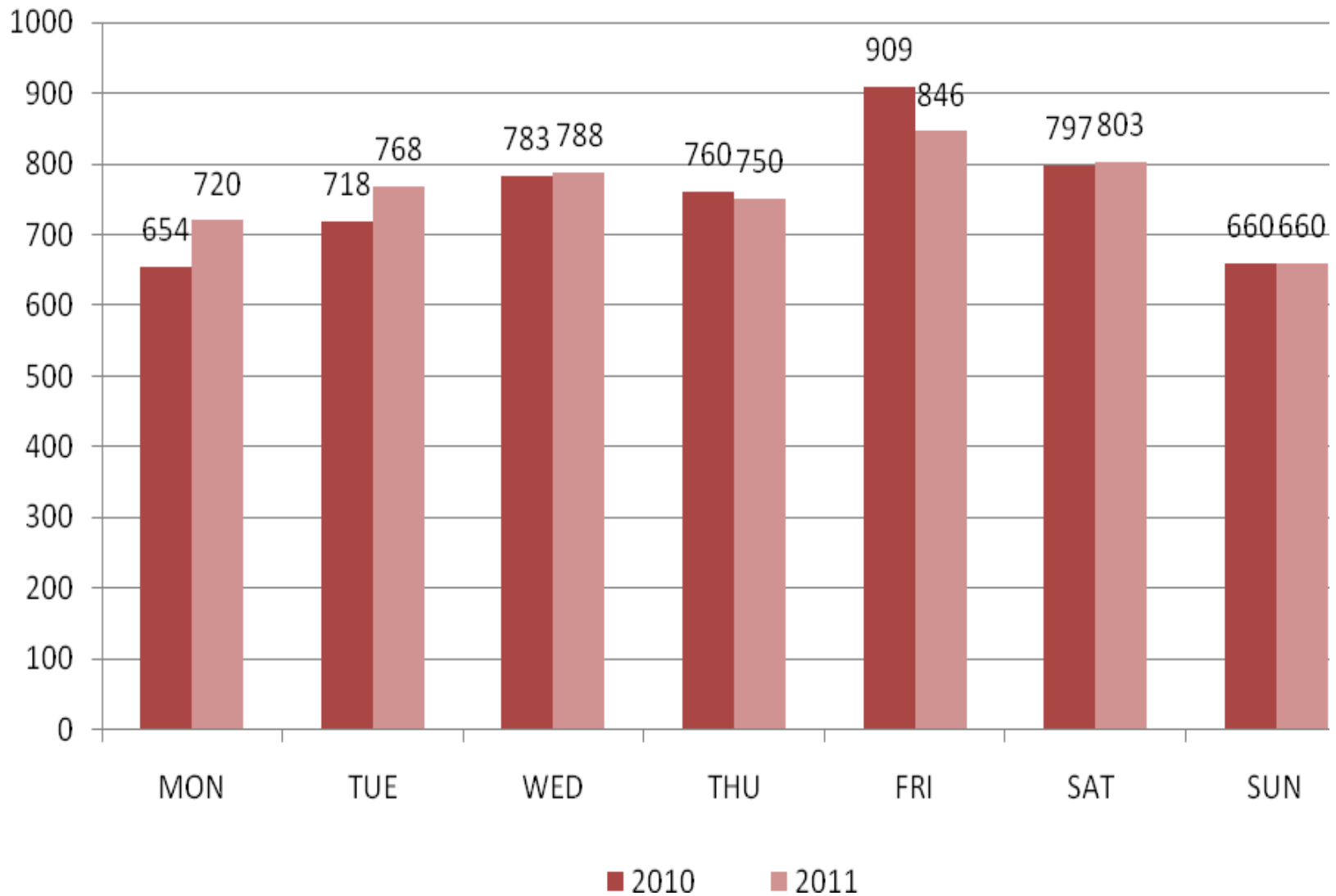
DISPATCHER	#	VAC	HRS	SICK	TRAIN	COURT	O.T.	CALLS	CALLS
				HRS	HRS	HRS	HRS	DISPATCH	HANDLED
OLSZEWSKI	1		24.0	60.0			72.0	841	163
NAMBO	2		16.0				27.5	1016	354
THRUMAN	3		72.0	12.0			12.0	853	292
BECK	4		72.0	12.0			24.5	749	124
MILBURN	5		75.3	55.5	12.8		31.0	895	361
SULLIVAN	7		83.0	35.0	40.0		19.0	332	156
JOHANNING	28							350	106
DAVIS	29							299	83
TOTAL			342.3	174.5	52.8	0.0	186.0	5335	1639

ROCHELLE POLICE DEPARTMENT CALLS FOR SERVICE BY HOUR OF DAY



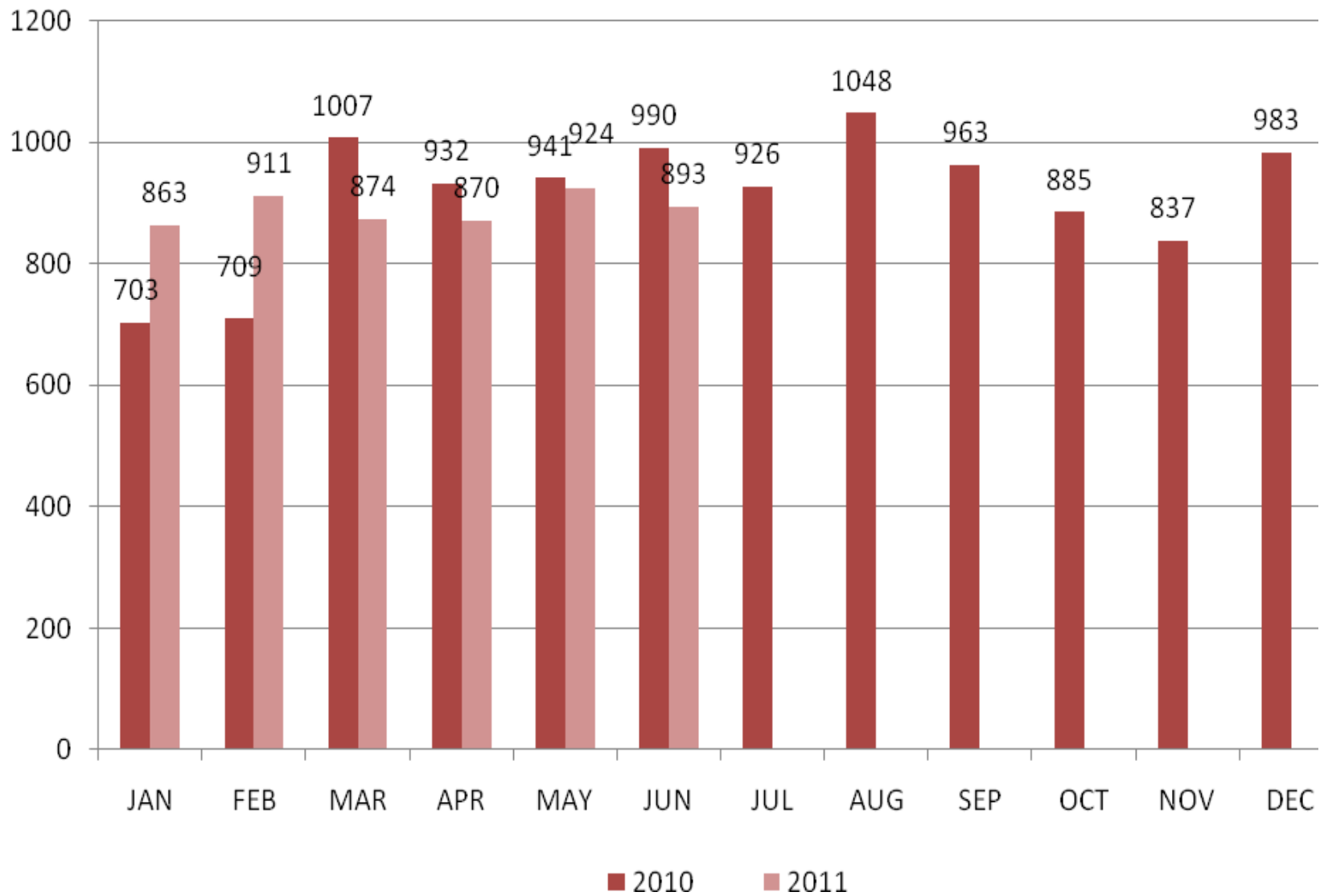
2011 SEMI ANNUAL

ROCHELLE POLICE DEPARTMENT CALLS FOR SERVICE BY DAY OF WEEK



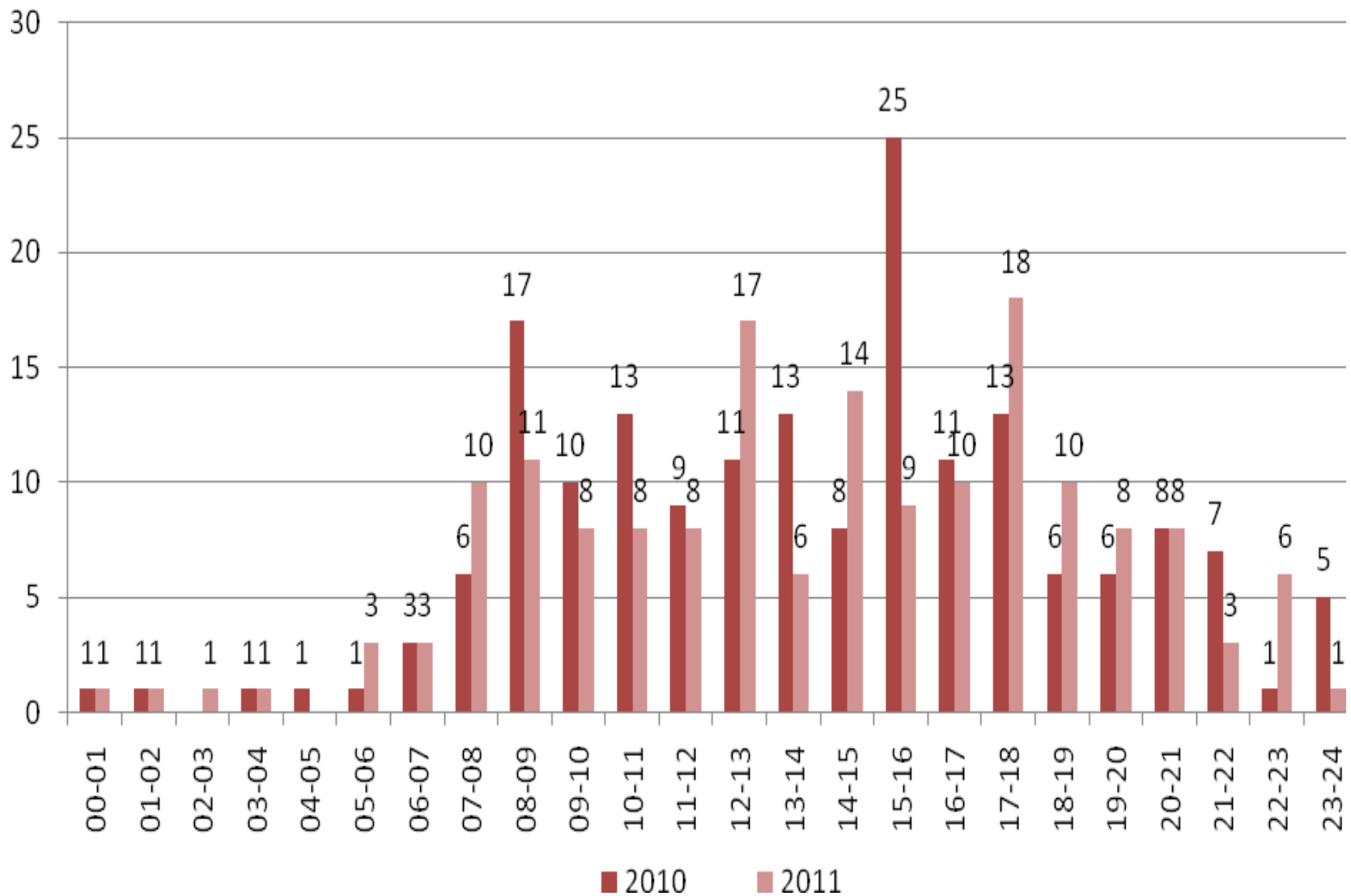
2011 SEMI ANNUAL

ROCHELLE POLICE DEPARTMENT CALLS FOR SERVICE BY MONTH



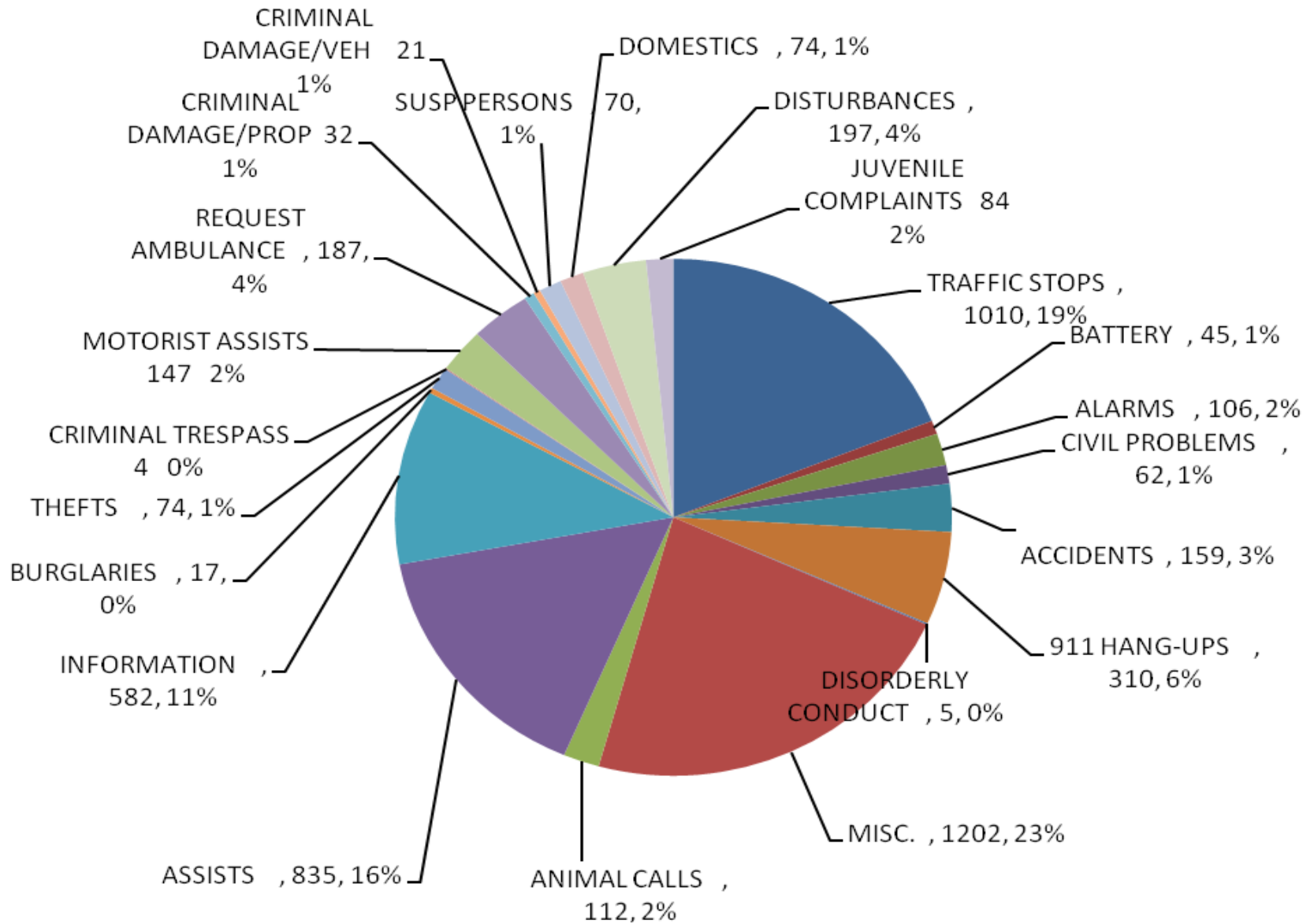
2011 SEMI ANNUAL

ROCHELLE POLICE DEPARTMENT ACCIDENTS BY HOUR OF DAY



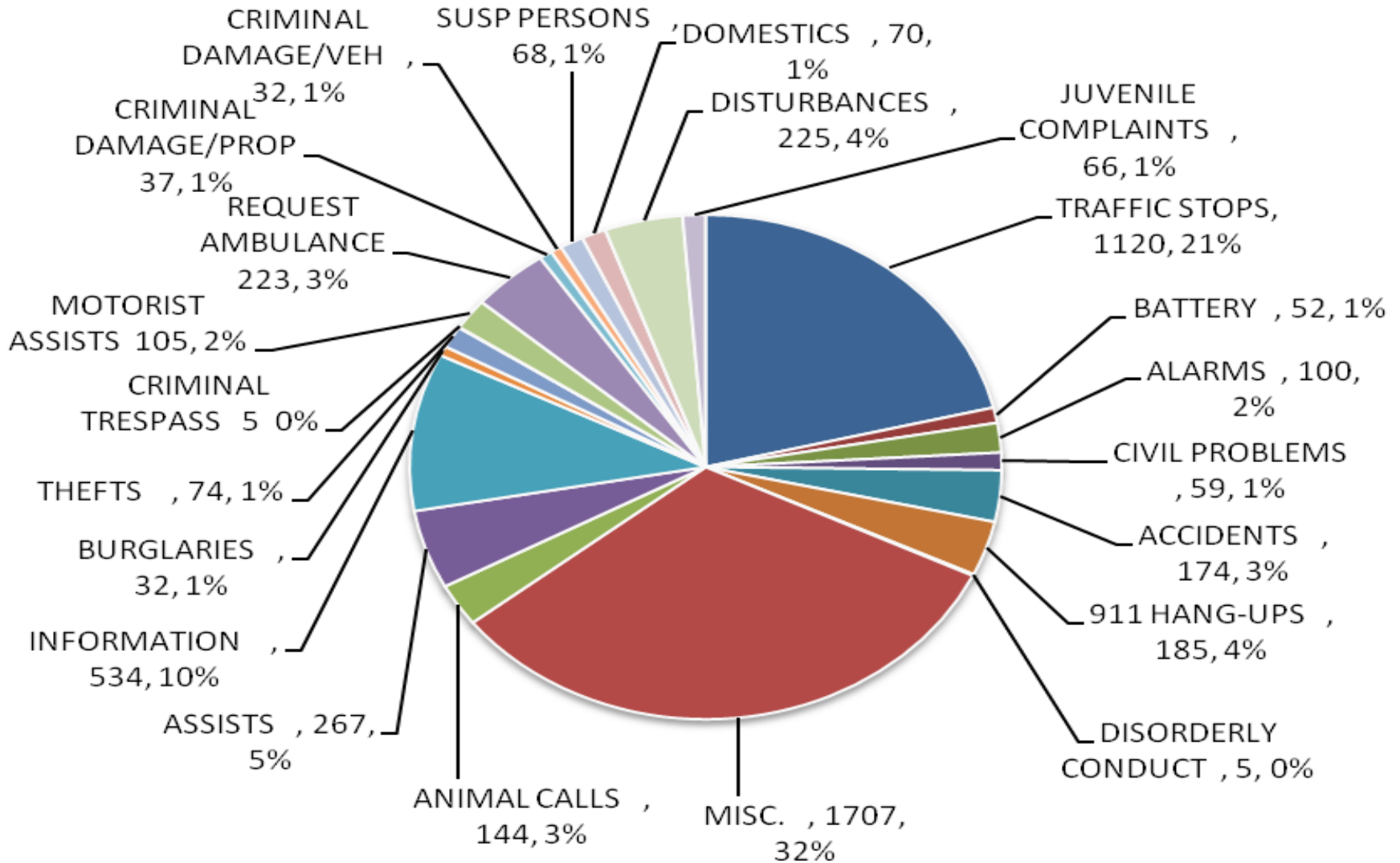
2011 SEMI ANNUAL

ROCHELLE POLICE DEPARTMENT BREAKDOWN OF CALLS FOR SERVICE



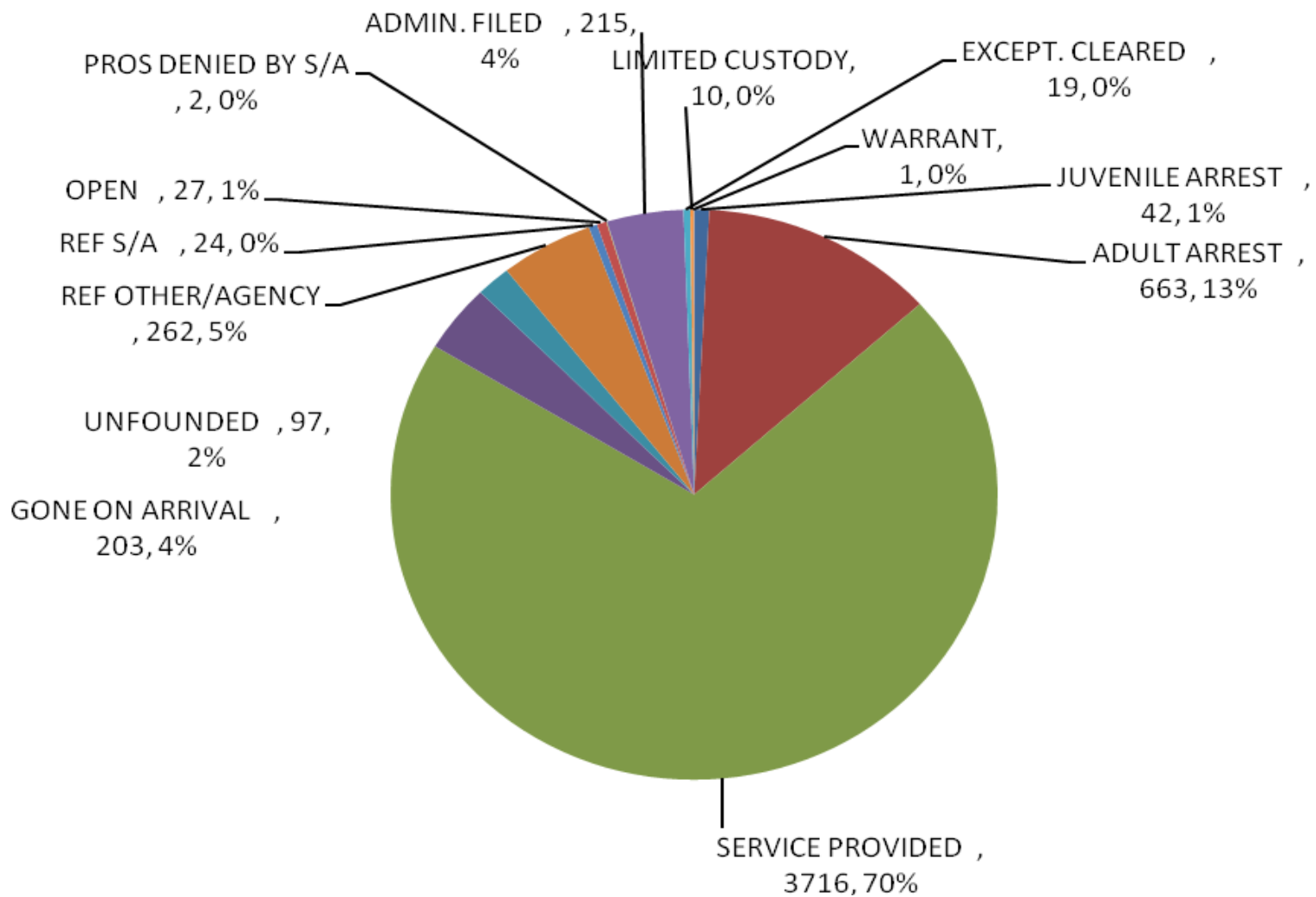
2011 SEMI ANNUAL TOTAL: 5335

ROCHELLE POLICE DEPARTMENT BREAKDOWN OF CALLS FOR SERVICE



2010 SEMI ANNUAL TOTAL: 5281

ROCHELLE POLICE DEPARTMENT CASE DISPOSITION



2010 SEMI ANNUAL