

ORDINANCE NO _____

Date Passed: June 11, 2012

**AN ORDINANCE AMENDING
THE 2009 COMPREHENSIVE PLAN UPDATE**

WHEREAS, the most recent Comprehensive Plan Update was adopted in 2009; and,

WHEREAS, the City of Rochelle has experienced significant growth in City rail development, and,

WHEREAS, because of this growth there is a need to plan for future expansion of the City of Rochelle Railroad; and,

WHEREAS, the City of Rochelle Comprehensive Plan Update needs to be amended to reflect planning for this growth; and,

WHEREAS, a duly noticed public hearing was held by the Planning and Zoning Commission at their meeting of June 4, 2012 and the Planning and Zoning Commission, by a vote of 8-0, recommended that City Council consider amending the 2009 Comprehensive Plan Update and incorporate text in regards to the City of Rochelle Railroad and a Railroad Expansion Map,

NOW THEREFORE BE IT ORDAINED by the Mayor and City Council of the City of Rochelle, Ogle County, Illinois, as follows:

Section 1. That the 2009 Comprehensive Plan Update is hereby amended to incorporate text in regards to the City of Rochelle Railroad (Exhibit "A") in Chapter 5 Transportation after the section on Aviation and incorporate the City of Rochelle Railroad Expansion Map (Exhibit "B") in the map section of the Comprehensive Plan Update after the Future Airport Layout Map.

Section 2. That this Ordinance shall be in force and effect from and after its passage, approval and adoption in pamphlet form as provided by law.

PASSED AND APPROVED this 11 day of June, 2012.

Ayes: _____ Nays: _____ Abstain: _____

Mayor

Attested: _____
City Clerk

Exhibit “A”

City of Rochelle Railroad

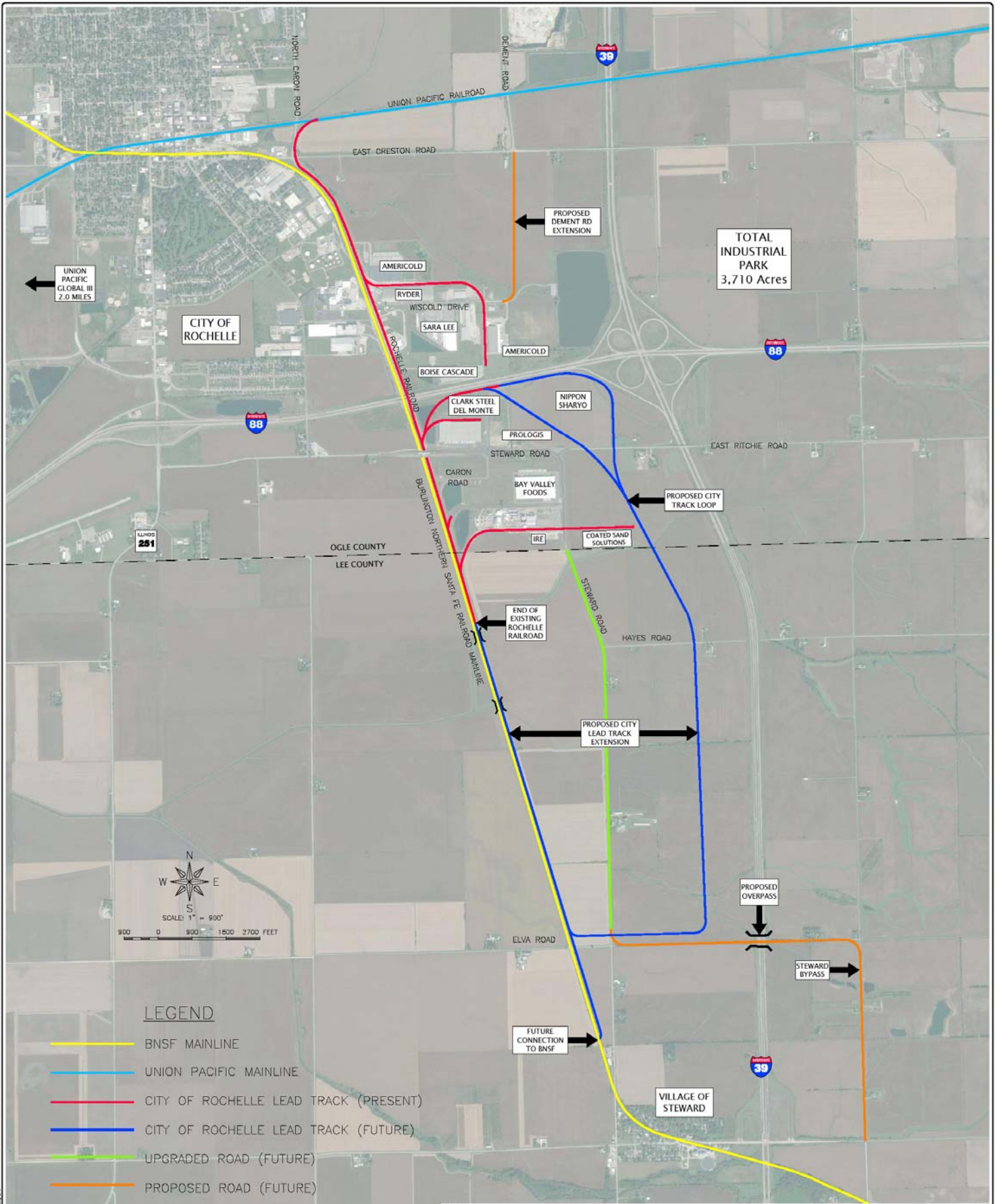
Rail transport has historically played a vital role within the life of Rochelle. Two Class 1 railroads (the Union Pacific and the Burlington-Northern/Santa Fe) not only intersect in Rochelle, but also provide inbound and outbound rail service to area industries. In addition, the municipal-owned, City of Rochelle Railroad (CIR) provides the unique, industry-attracting service of dual switching to both Class 1 railroads. Finally, Union Pacific built their flagship Global III Intermodal in Rochelle in 2003.

The GREDCO Industrial Park grew around the original site of the City of Rochelle Railroad. A second phase expansion led to the extension of the rail south of I-88 to serve new industrial clients located there. In 2010 and 2011, the City used the attractiveness of (and promise to expand) the City of Rochelle Railroad to bring two new industrial clients, Nippon Sharyo and Coated Sand Solutions, to Rochelle.

This most-recent expansion began in late 2011 and will continue through mid-year 2012. It consists of: 1) expanding our Union Pacific storage track at the SE corner of Creston and Caron Roads, 2) adding new sidings to parallel the existing CIR and BNSF tracks west of Caron Road, 3) extending the CIR east from Caron Road to the Nippon Sharyo Site, and 4) extending the CIR east across Steward Road to the Coated Sand Solutions site.

Ever-evolving changes within the transportation and rail industries are providing increasing opportunities for the City of Rochelle to leverage its expanding railroad system to both attract new industrial businesses and to also increase the revenue generation realized by rail-switching services. The City and GREDCO have positioned themselves to open up hundreds of additional acres to industrial and rail-served clients. The demand for shortline switching and transloading are also increasing, services in which the City of Rochelle is neatly positioned to take full advantage of.

With this in mind, future plans for the City of Rochelle Railroad may include: 1) extending the City Railroad further south along the BNSF toward Steward, 2) creating a CIR rail “loop” in the Prologis and Boyle Industrial Parks, and 3) identifying and/or creating area transloading facilities. Future City of Rochelle Railroad plans can be found on the City of Rochelle Rail Road Expansion Map.



LEGEND

- BNSF MAINLINE
- UNION PACIFIC MAINLINE
- CITY OF ROCHELLE LEAD TRACK (PRESENT)
- CITY OF ROCHELLE LEAD TRACK (FUTURE)
- UPGRADED ROAD (FUTURE)
- PROPOSED ROAD (FUTURE)

**City of Rochelle
Railroad Expansion Map**



FEHR-GRAHAM & ASSOCIATES, LLC
ENGINEERING AND SCIENCE CONSULTANTS

FREEPORT, IL ROCKFORD, IL ROCHELLE, IL SPRINGFIELD, IL MONROE, WI
ILLINOIS DESIGN FIRM NO. 184-003525

© 2007 FEHR-GRAHAM & ASSOCIATES