

# **Corridor Lighting Design City of Rochelle**

## **Lighting Design Concept Plan Summary**

Prepared for: the City of Rochelle

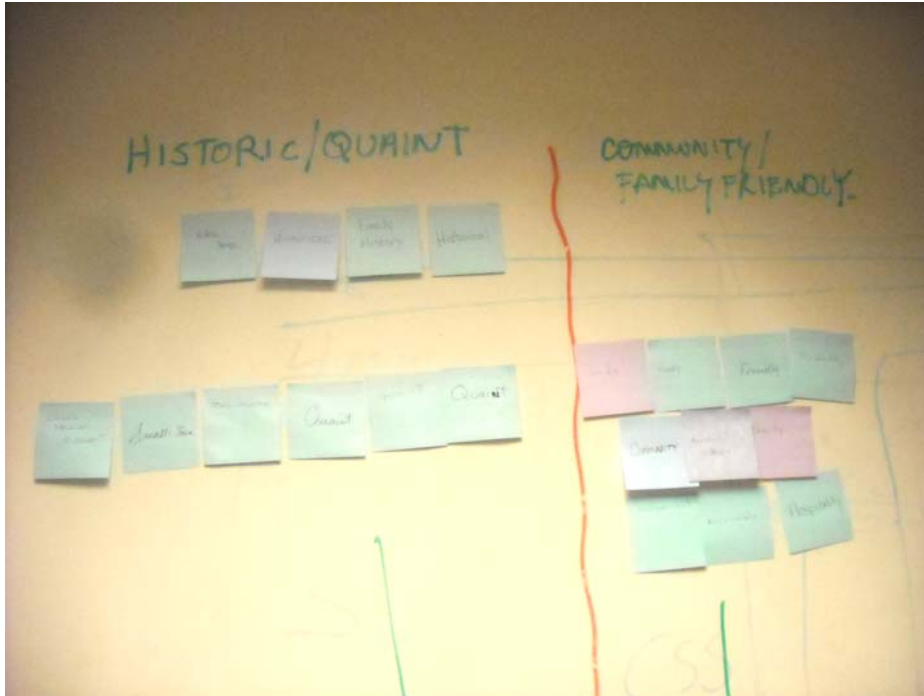
Prepared by: Teska Associates, Inc.

13 August 2012



# Workshop Meeting #1 – Recap

(08 May 2012)



**HISTORIC / QUAINT**

**COMMUNITY /  
FAMILY  
FRIENDLY**



**PROGRESSIVE /  
REBIRTH / QUALITY**

**RAILROADS /  
PARKS**

# Goals and Objectives

The City of Rochelle's Corridor Lighting Plan should be:

- 1) Safe, efficient, and considerate of applicable design standards for lighting along City roadways and sidewalks;
- 2) Unique and inspiring in expressing the City's identity as a family friendly community with a quaint and historic downtown and;
- 3) Sustainable in its use of energy resources.



# Goals and Objectives

**Goal 1: Safe, efficient and considerate of applicable design standards for lighting along City roadways and sidewalks**

- a) Design standards as per IDOT, including but not limited to:
  - a. Breakaway pole mounting; Photometrics; Full cut-off lighting.



# Goals and Objectives

## **Goal 2: Unique and inspiring in expressing the City's identity as a family friendly community with a quaint and historic downtown**

- a) Develop a hierarchy of lights that are coordinated with City corridors & districts.
  - i. Historic Core District (Core Downtown area and adjacent historic residential neighborhoods; Lincoln Highway within the Downtown area)
  - ii. Auto Oriented Corridors (US Rte 251; St Rte 38; Flagg Rd)
  - iii. Residential Neighborhoods
- b) Select lighting products that are reflective of Rochelle's identity as a historic, quaint, family friendly community.
  - i. Incorporate light pole appurtenances as appropriate to budgets and location, including community identity signage, banners, light receptacles, flagpole holders, hanging baskets, irrigation systems, recognition plaques, decorative banding.
  - ii. Select products that are traditional and timeless, not a replica of a historic style or modern design that could become dated over time.



# Goals and Objectives

## **Goal 3: Sustainable in its use of energy resources**

1. Dark Skies compliant fixtures;
2. LED technology; **shall be considered only as practical to light pole quantities and spacing;**
3. Recycled material content as appropriate.

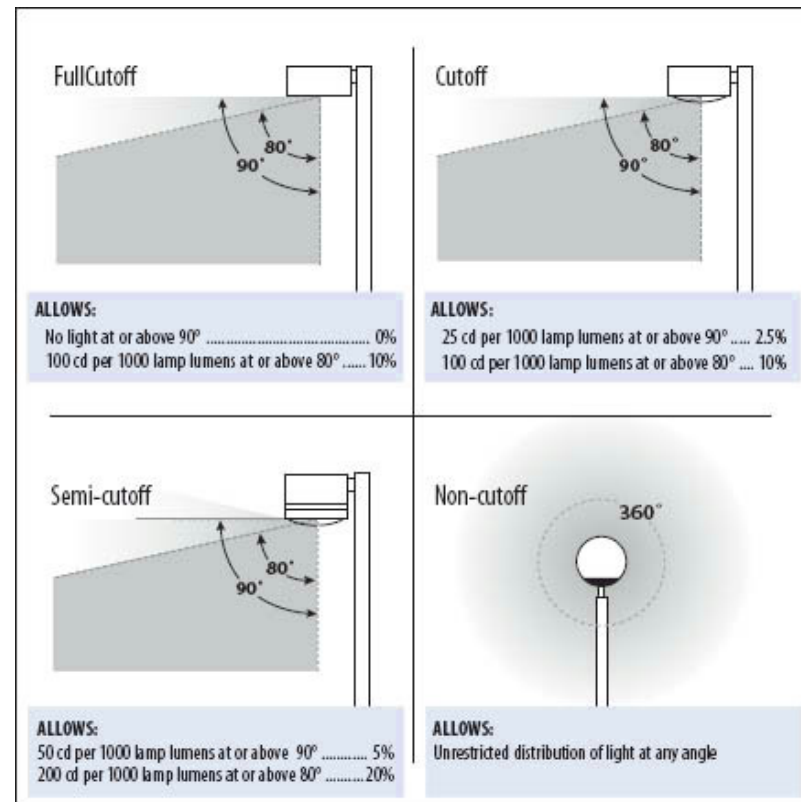
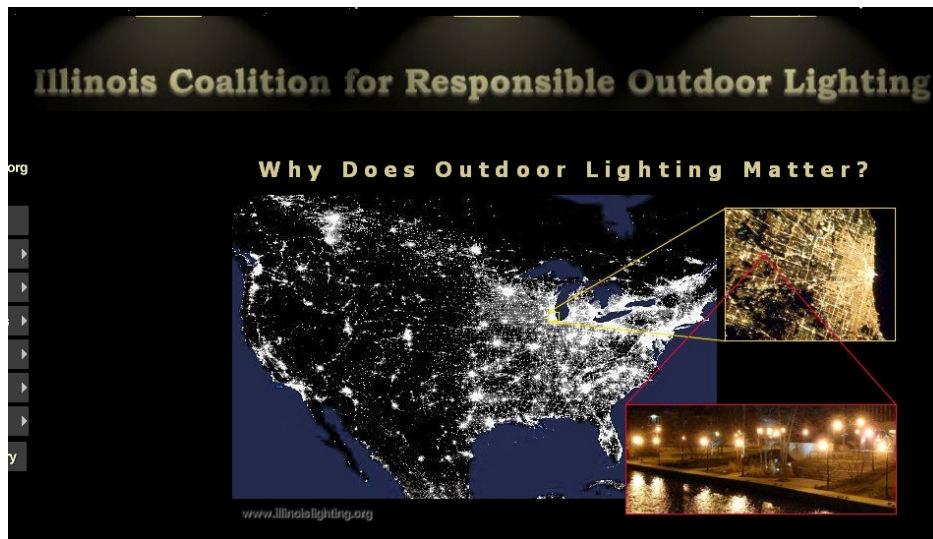


# Goals and Objectives

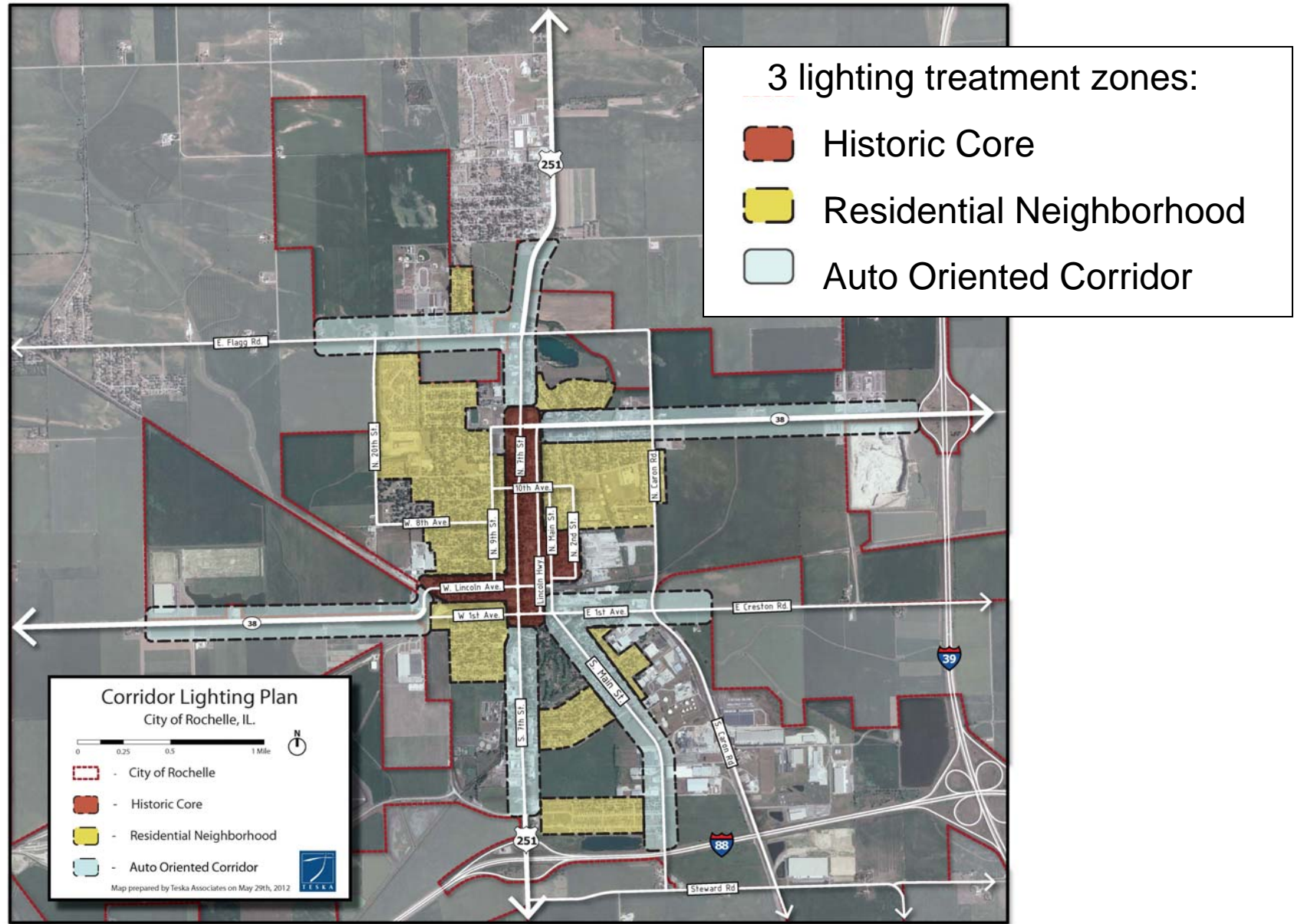
DARK SKIES INITIATIVES AND RESOURCES:

International Dark-Sky Association: [www.darksky.org](http://www.darksky.org)

Illinois Coalition for Responsible Outdoor Lighting: [www.illinoislighting.org](http://www.illinoislighting.org)






# Lighting Treatment Hierarchy Overall Zone Map



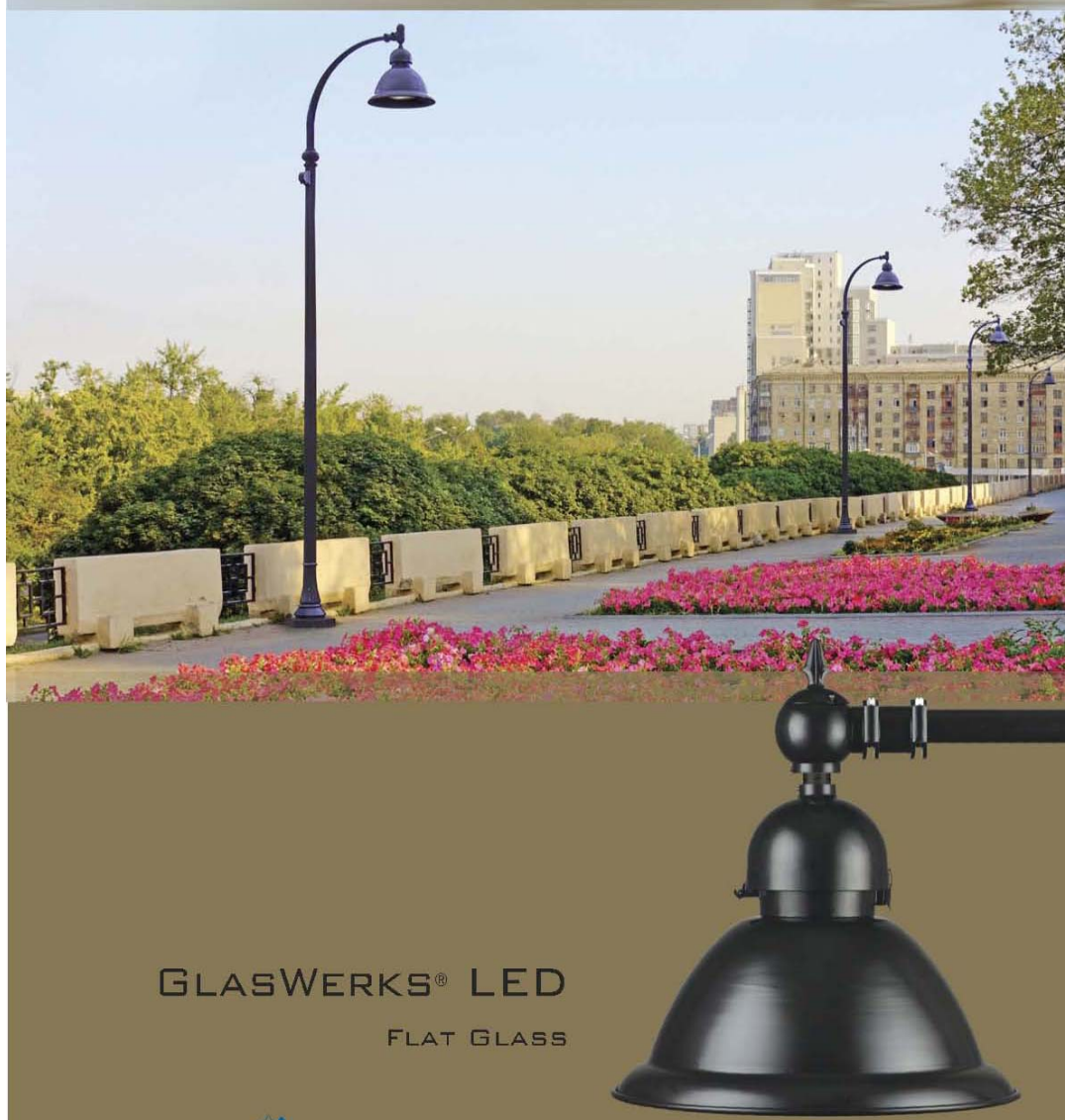
# Lighting Treatment Hierarchy Enlarged Zone Map



3 lighting treatment zones:

-  Historic Core
-  Residential Neighborhood
-  Auto Oriented Corridor

# Auto Oriented Corridors



Full cutoff fixture with hood



*Image credit: Holophane Lighting,  
Glaswerks model*

# Auto Oriented Corridors

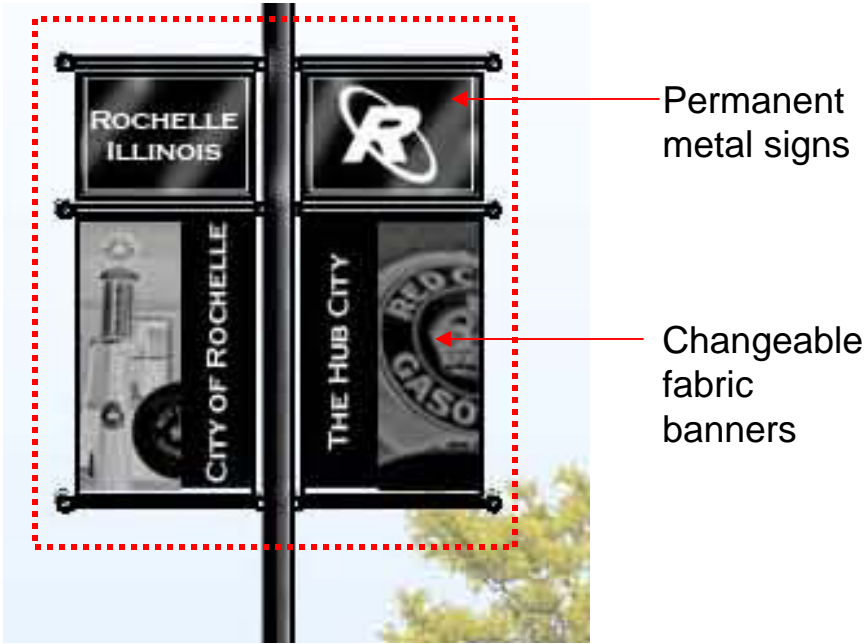
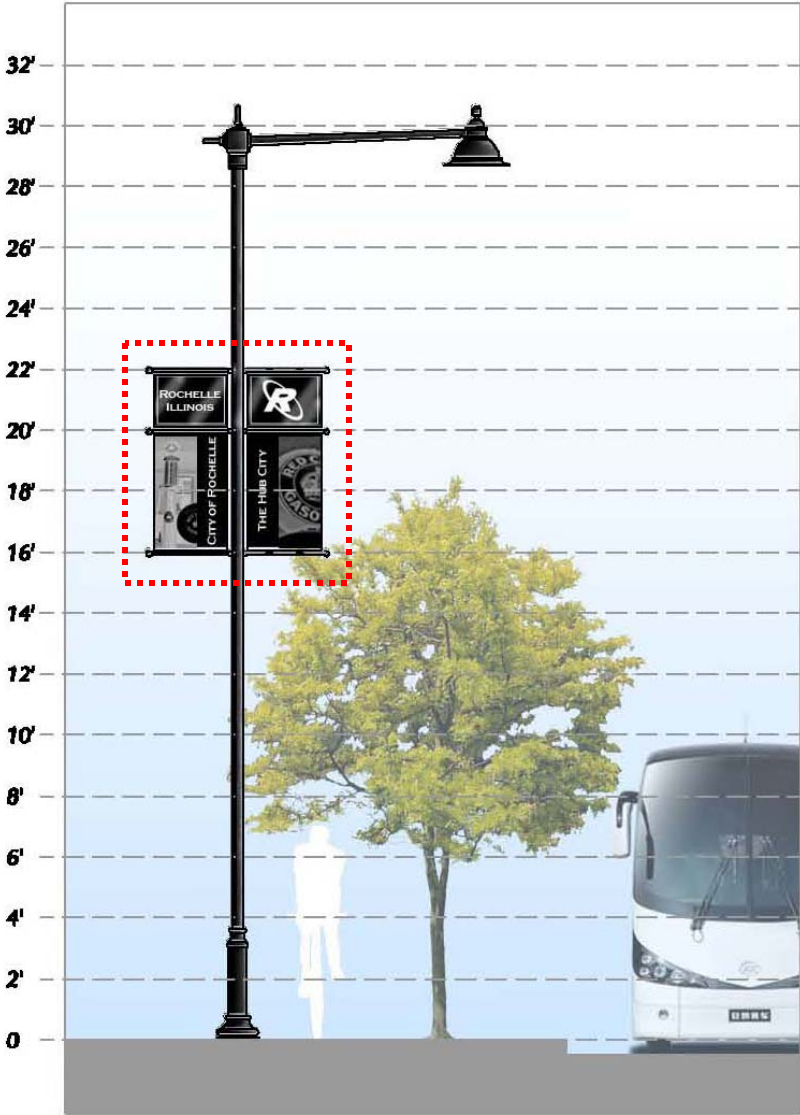


Corridor application of full cutoff fixture with decorative pole and arm

Note that for full cutoff, luminaire will be recessed into hood

*Image credit: Lumec Lighting, Domus model*

# Auto Oriented Corridors



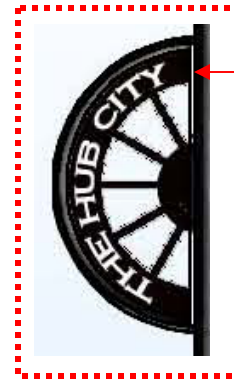
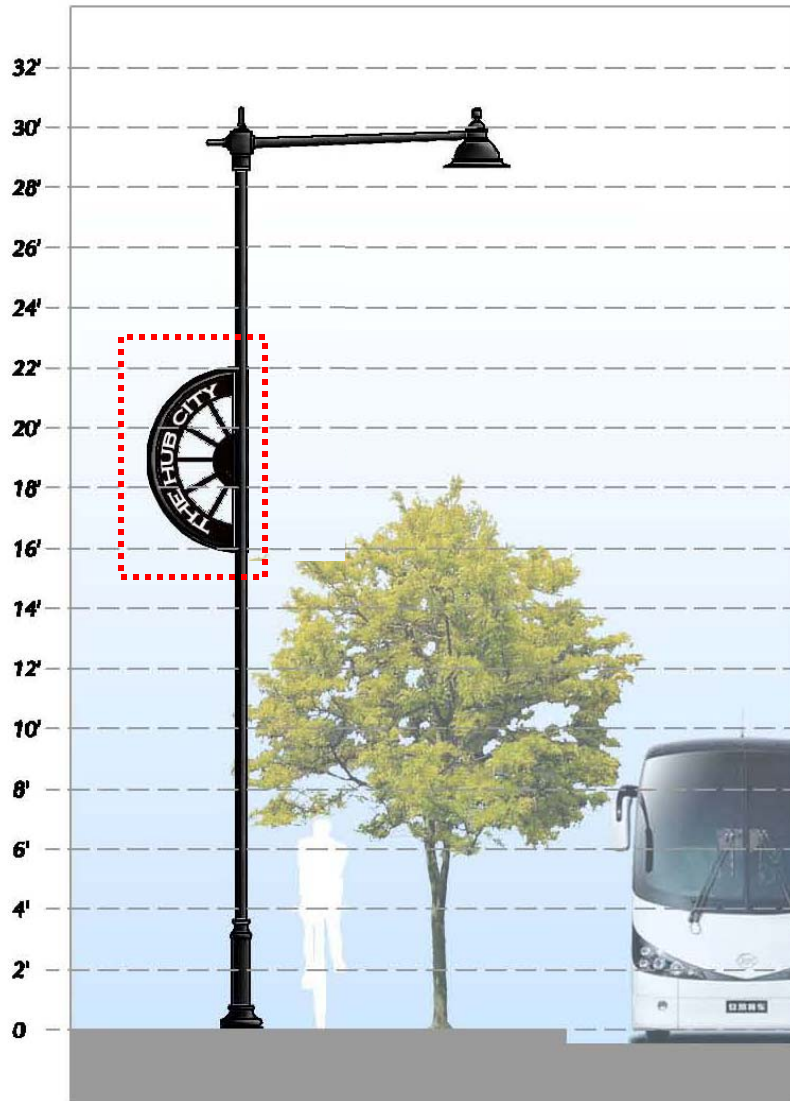
Thematic approach to signage and banners:  
 Nostalgic imagery and fonts celebrate period design features; Monochromatic signage maximizes contrast and is reflective of classic forms.  
 Consider limited banner / sign placement so as not to overpower the quantity of signage along the street.



## AUTO ORIENTED CORRIDOR ASSEMBLY DIAGRAM

Full cutoff LED hood fixture with decorative arm, pole, base, signage and banners

# Auto Oriented Corridors Gateway Poles – OPTION 1



Punched  
metal sign

Thematic approach to gateway signs:

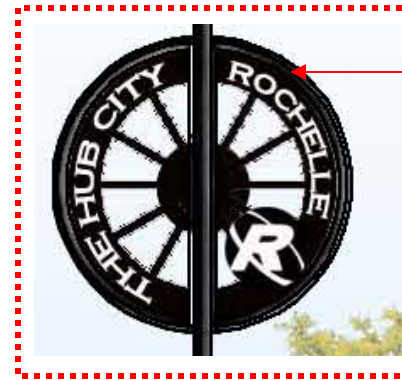
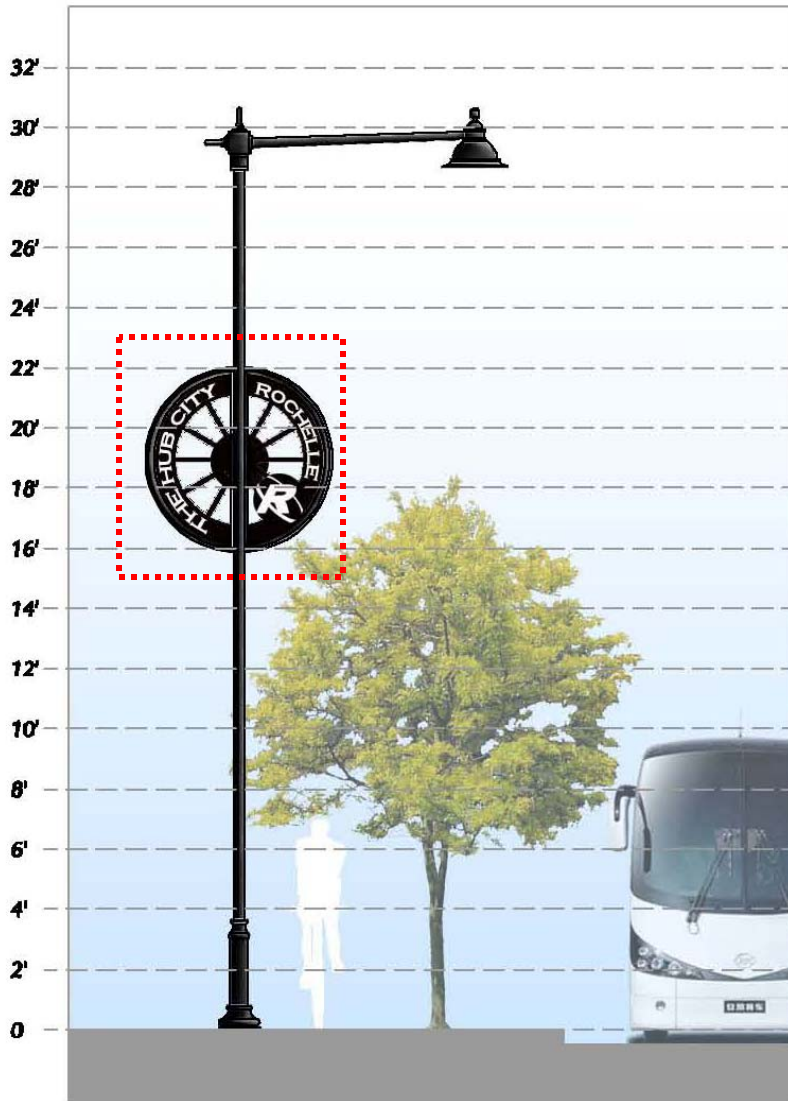
Stylized Wheel and references to Rochelle's identity as "The Hub City"; Monochromatic signage maximizes contrast and is reflective of classic forms.



## AUTO ORIENTED CORRIDOR ASSEMBLY DIAGRAM – GATEWAY POLE **OPTION 1**

Full cutoff LED hood fixture with decorative arm, pole, base, and gateway signs occurs at key entry points into the City

# Auto Oriented Corridors Gateway Poles – OPTION 2



Punched  
metal sign

Thematic approach to gateway signs:

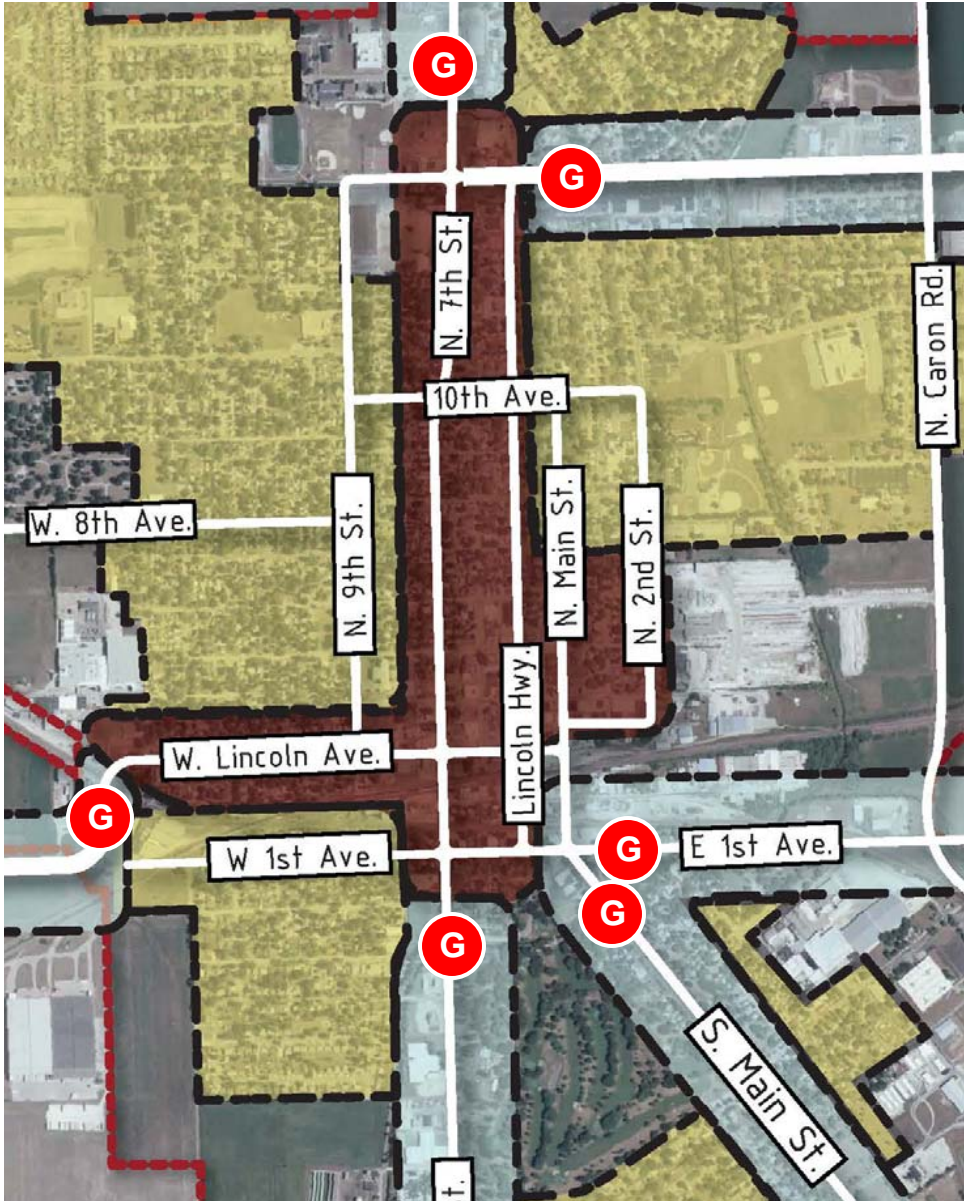
Stylized Wheel and references to Rochelle's identity as "The Hub City"; Monochromatic signage maximizes contrast and is reflective of classic forms.



## AUTO ORIENTED CORRIDOR ASSEMBLY DIAGRAM – GATEWAY POLE **OPTION 2**

Full cutoff LED hood fixture with decorative arm, pole, base, and gateway signs occurs at key entry points into the City

# Auto Oriented Corridors Gateway Poles



**G** Gateway Pole Locations



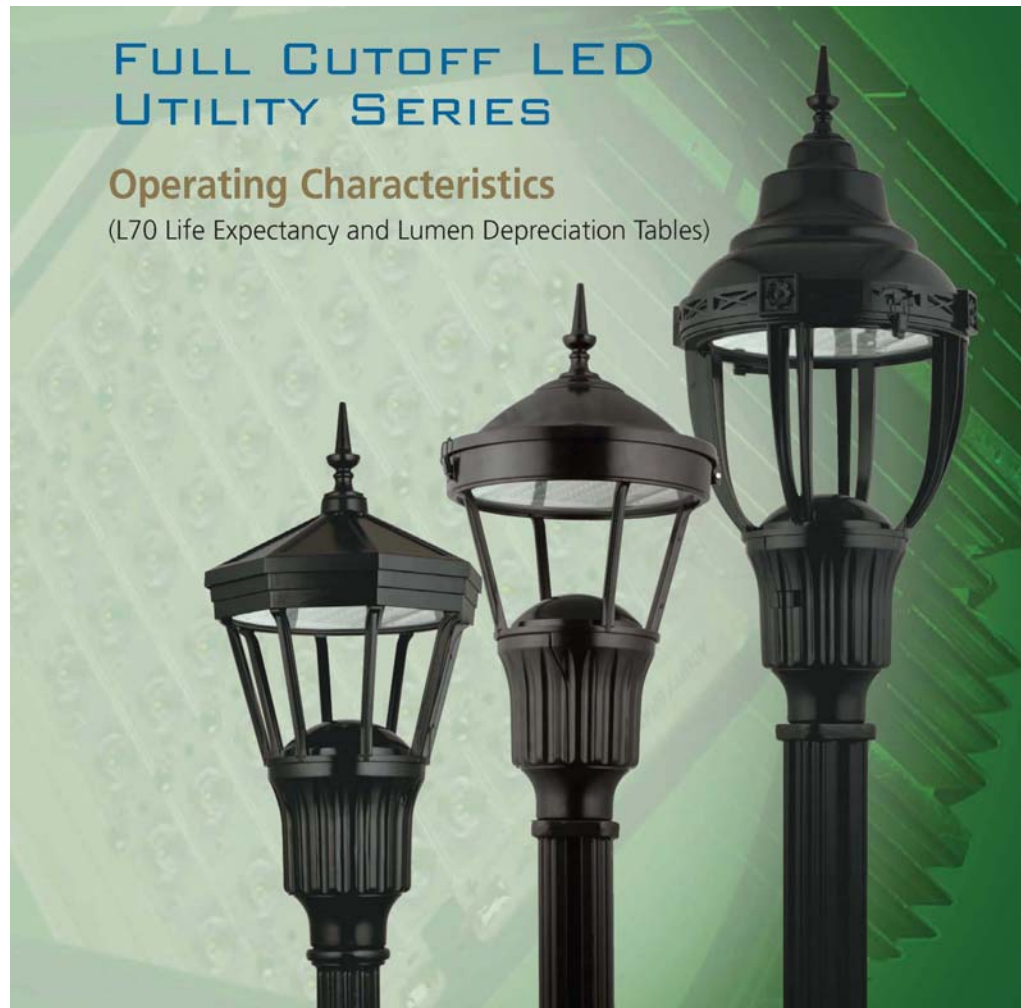
# Auto Oriented Corridor - before



# Auto Oriented Corridor - after



# Historic Core & Residential Neighborhoods



*Image credit: Holophane Lighting,  
Full Cutoff LED Utility Series*

# Historic Core & Residential Neighborhoods

Downtown district application



Residential neighborhood application



*Image credit: Holophane Lighting, Full Cutoff LED Utility Series*

# Historic Core & Residential Neighborhoods

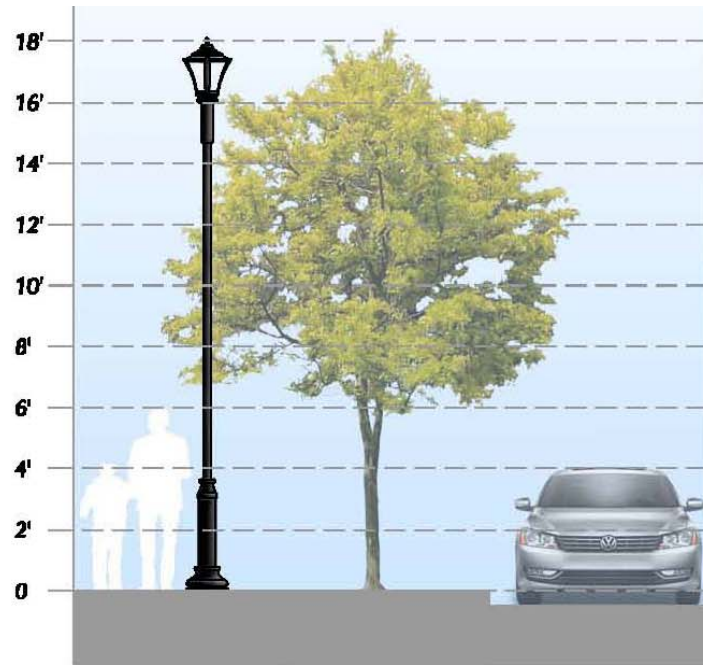


Flagpole hanger  
 Custom fabric banner  
 Planter hanger

Thematic approach to flags, banners & planters:  
 Nostalgic imagery and fonts celebrate period design features; Monochromatic signage maximizes contrast and is reflective of classic forms; Select banners may be used as permanent memorial plaques; Purple accents reference City logo color.



**HISTORIC CORE**



**RESIDENTIAL NEIGHBORHOODS**



Full cutoff LED post top fixtures

Optional appurtenances for the historic core: medallion at base, fabric banner, flagpole hanger, planter hanger.

# Poles and Appurtenances



Common light pole style,  
color and texture applied to  
a family of poles

*Image credit: Holophane,  
Site Link Poles*

# Poles and Appurtenances



Street signs and directional signs



Traffic signal poles

# Poles and Appurtenances

Integrated mounting equipment prevents the need for unsightly aluminum straps



*Image credit: Holophane,  
Site Link Poles*

# Downtown Core - before



# Downtown Core - after



# Residential Neighborhood - before



# Residential Neighborhood - after





## Questions / Discussion