

**Statement of Qualifications
Engineering Selection
Rochelle Municipal Airport-Koritz Field
CITY OF ROCHELLE**

July 12, 2013



June 26, 2013

Mr. Mark Delhotal, Airport Manager
City of Rochelle, Illinois
Rochelle Municipal Airport – Koritz Field
1201 W. Gurler Road
Rochelle, IL 61068

**RE: Statement of Qualifications – Airport Consultant
Rochelle Municipal Airport – Koritz Field**

Dear Mark:

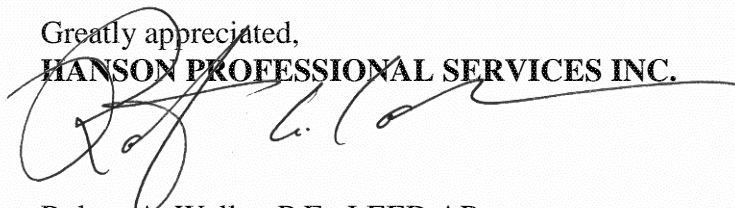
Since 1984, Hanson has been a part of Rochelle Municipal Airport-Koritz Field (Airport). In that time our team of professionals has successfully completed numerous projects. With this experience we've developed a thorough knowledge of the Airport infrastructure and its needs, and developed productive working relationships with the City of Rochelle (City) and its staff.

As the City evaluates consultants submitting qualifications to provide professional engineering services to the Airport, several essential elements will no doubt be considered, desired, and sought within this selection to achieve a successful outcome. These traits generally include professional and technical experience and competency; familiarity with the Airport and its tenants, and their respective goals; responsiveness; and a project team with a strong commitment to ensure successful projects. As I hope you've observed working with us over the course of the last retainer, we possess all of these attributes and are persistent in our pursuit of practical solutions.

We interact with the staff at the Illinois Department of Transportation-Division of Aeronautics daily. These relationships and face to face discussions can many times result in the funding of a project, the resolution to an issue, or the awareness of an upcoming policy or regulation that will impact the Airport – all of which are difficult to quantify but intuitively are of great value.

I believe leveraging our collective airport experience will lead to a continued successful partnership between the Airport staff (City) and Hanson. These last few years have been exciting times at the Airport with the acquisition of CSC and the expansion and improvement of the airfield, and I foresee a bright future there as well – a future we'd enjoy continuing to be a part of. If you need more information or would like to schedule a meeting please contact me at (217) 747-9433.

Greatly appreciated,
HANSON PROFESSIONAL SERVICES INC.



Robert A. Waller, P.E., LEED AP
Program Manager

TABLE OF CONTENTS

SECTION 1 Name, Size, And Description Of Firm	PAGE 1
SECTION 2 Location of Main Office/Where Work will be Accomplished	PAGE 3
SECTION 3 Previous Airport Development Experience	PAGE 4
SECTION 4 Resumes of Key Personnel	PAGE 9
SECTION 5 References	PAGE 19
SECTION 6 Additional Information	PAGE 20
SECTION 7 IDOT Prequalification for Airport Work	PAGE 23

Name, Size, and Description of Firm

SECTION 1

Name, Size, and Description of Firm

HANSON PROFESSIONAL SERVICES INC. (Hanson) is an employee-owned consulting firm providing engineering, architecture and planning services to clients around the world. The firm, founded in 1954, employs approximately 350 architects, engineers, land acquisition specialists, planners, water resource specialists, scientists, surveyors, and technicians. Throughout Hanson's 58-year history, the company has completed projects nationwide and in many foreign countries.

For the last 20 years, Hanson has consistently appeared in the ENR Top 500, Engineering News-Record Magazine's listing of premier design firms in the United States. Hanson recently ranked No. 149 on the national list.

Every day Hanson's professionals develop concepts that influence the way we live, think, communicate and move about in our communities. By applying our technical knowledge and creative abilities to every project, we create dynamic yet functional designs for bridges, highways, airports, railroad intermodal facilities, offices schools and universities, radio broadcast stations and much more.

Hanson's mission is to assist our clients in meeting their business- or government-sector goals by providing quality professional engineering, architecture, planning and allied services while protecting the public and environment.

Additionally, we provide our clients with environmentally sensitive options through our knowledge and implementation of sustainable design practices. We're proud to be a corporate member of the U.S. Green Building Council — the leading organization dedicated to expanding green building practices through its LEED (Leadership in Energy and Environmental Design) Green Building Rating System. We know the LEED standards and integrate them into our practices as often as possible.



Clients are served from Hanson's corporate headquarters in Springfield, Illinois, and offices in Chicago, Tinley Park, Carbondale, Peoria and Rockford, Illinois; Nashville, Tennessee; Frankfort, Kentucky; Indianapolis, Indiana; Kansas City and St. Louis, Missouri; Sarasota, Fort Lauderdale, Jacksonville, Orlando and West Palm Beach, Florida; Dallas, Texas; Shreveport, Louisiana; Raleigh, North Carolina; Seattle, Washington; New York Metropolitan Area, NY; and Anchorage, Alaska.

AIRPORT PLANNING, DESIGN AND CONSTRUCTION

Hanson has provided airport planning, design and construction services for more than 50 years, completing assignments for aviation clients at various airport locations throughout the United States. We have been of service to all sizes of airports, from commercial service and primary airports to small private facilities. Our aviation staff of more than 50 engineers, planners, surveyors, scientists and technicians have completed projects in the following specialized areas:

ENGINEERING DESIGN

- Runways, taxiways and taxiway bridges
- Access roads, parking areas, aprons/ramps
- Airfield lighting, marking and signage
- Approach and landing aids, AWOS installations
- Geotechnical analysis
- GPS/GIS/CADD services
- Industrial/commerce park design
- Storm drainage systems

AIRPORT TERMINALS AND HANGARS

- ARFF and SRE facilities
- Maintenance and aircraft storage hangars
- Passenger terminals and cargo facilities
- Utilities

CONSTRUCTION SERVICES

- Constructability reviews
- Construction administration and management
- Design-build
- Quality control services
- Resident construction observation

ENVIRONMENTAL SERVICES

- Wildlife Hazard Assessments
- Threatened/Endangered Species Surveys
- Cultural and historical investigations
- Environmental assessments, mitigation planning
- Noise assessments/impact reports
- Permitting
- Noise mitigation programs

AIRPORT PLANNING

- Master plans and layout plans, system plans
- Economic studies
- FAR Part 150 noise studies/land use plans
- Land-use planning
- Public involvement and outreach programs
- Site selection studies
- Stormwater management



Rochelle Municipal Airport-Koritz Field
Rochelle, IL



Mount Vernon Airport
Mount Vernon, IL



DeKalb Taylor Municipal Airport
DeKalb, IL



Macomb Municipal Airport
Macomb, IL

Location of Main Office/Where Work will be Accomplished

SECTION 2
Location of Main Office/Where Work will
be Accomplished

SECTION 2

Location of Main Office/ Where Work will be Accomplished

Hanson's corporate office is located at:

1525 S. Sixth Street
Springfield, IL 62703
Phone: 217.788.2450
Fax: 217.788.2503

All work for this contract will be coordinated from
Hanson's office in Springfield, IL:

1525 S. Sixth Street
Springfield, IL 62703
Phone: 217.788.2450
Fax: 217.788.2503

Robert Waller, P.E., LEED AP, Program Manager

Phone: 217.747.9237 Ext. 237
E-mail: rwaller@hanson-inc.com



Previous Airport Development Experience

SECTION 3
Previous Airport Development
Experience

SECTION 3

Previous Airport Development Experience

Projects relevant to the Rochelle Municipal Airport-Kortiz Field that illustrate Hanson’s knowledge of preparation of a design document; preliminary design; design phase; bidding services, construction phase services and FAA, IDOT and local regulations include:

Rochelle Municipal Airport-Koritz Field Rochelle, IL

The Rochelle Municipal Airport-Koritz Field is a public use facility located 1 mile south of Rochelle, Illinois. Currently the airport has a single 4,225-ft by 75-ft paved runway. The operations consist of a mix of local and transient general aviation aircraft. The City of Rochelle, Illinois intends to extend Runway 7/25 to accommodate larger, faster approaching aircraft.

REPRESENTATIVE PROJECTS

- 2013 Partial parallel taxiway
- 2013 Extend Runway 7/25
- 2012 Land acquisition services
- 2011 Construct electrical vault
- 2010 Construct hangar – safety plan and CATEX
- 2009 Airport Layout Plan (ALP)
- 2008 Environmental assessment (EA)
- 2007 Exhibit A – airport property line map
- 2006 Land acquisition services
- 2004 VADI’s and REIL’s on Runway 7/25
- 2001 Bituminous overlay of Runway 7/25
- 1996 AWOS-III installation
- 1994 T-Hangar access taxiway reconstruction
- 1994 Airport Layout Plan (ALP)



Install 4-Box PAPI



Interior of New Electrical Vault

Reference

Mark Delhotal, Airport Manager
Rochelle Municipal Airport-Koritz Field
1201 W. Gurler Road
Rochelle, IL 61068
Phone: 815.561.5081
Email: mdelhotal@rochelleil.us

Mount Vernon Airport

Mount Vernon, IL

Mount Vernon Airport is a large general aviation airport in southern Illinois. The airport has expanded significantly since 1976 to accommodate large jet aircraft, initially commercial service jet aircraft as part of the Essential Air Service program. Hanson’s staff has been involved in the planning, design and construction observation of projects at the airport since that time.

“Hanson’s staff has consistently provided these services in a timely, professional, and cost effective manner. They maintain an effective line of communication between this office, the Federal Aviation Administration and the State agencies and have been able to hand unforeseen complications and bring them to successful conclusions.” – Chris Collins, Airport Director, Mount Vernon Airport Authority

REPRESENTATIVE PROJECTS

- 2013 Construct site development and ramp for corporate hangar
- 2011 Drainage analysis for runway safety area (RSA) correction
- 2011 Environmental assessment
- 2011 Replace perimeter fence
- 2010 Airport Layout Plan (ALP)
- 2010 Construct community hangar ramp
- 2008 Rehabilitate and overlay Taxiways C and D
- 2008 Repair airfield lighting controls
- 2007 Rehabilitate and overlay Taxiway A, B, and E including crossover taxiways
- 2006 Airport Layout Plan (ALP) update
- 2006 Rehabilitation and overlay of Runway 15/33
- 2006 Land acquisition services
- 2005 Rehabilitation and overlay of Runway 5/23
- 2003 Construction of an eight-inch watermain and related work
- 2002 Fuel farm installation
- 2002 Runway study
- 2002 Airport Layout Plan (ALP) and Exhibit A-property line map
- 2002 Reconstruct apron (Phase IV)
- 2001 Reconstruct airport entrance road
- 2001 Apron reconstruction (Phase III)
- 2000 Access road from terminal to fuel facility
- 2000 Apron reconstruction (Phase II)
- 1999 Reconstruct pavement near maintenance building and fuel facility



New 10-ft Perimeter Fence and Gate



Surface Painted Holding Sign Marking

Reference

Chris Collins, Airport Director
 Mount Vernon Airport Authority
 100 Aviation Drive
 Mount Vernon, IL 62864
 Phone: 618.244.7900
 Email: managemvaa@mvn.net

DeKalb Taylor Municipal Airport

DeKalb, IL

DeKalb Taylor Municipal Airport is a public-use airport located approximately 45 miles west of Chicago's O'Hare International Airport. The airport was purchased by the City of DeKalb in 1948 to serve the needs of business and recreational fliers. Since 1982, more than 40 airport improvement and expansion projects have been completed, including the acquisition of more than 650 acres of land.

"Hanson has the expertise in the field for which they are providing service. I commend your staff for the excellent job they do!"
– DeKalb Taylor Municipal Airport

REPRESENTATIVE PROJECTS

- 2013 Land acquisition
- 2012 Land acquisition
- 2011 Airfield signage replacements, beacon upgrades
- 2010 Drainage improvements and land acquisition
- 2009 Airport Layout Plan (ALP)
- 2008 Install medium-intensity approach lighting system with runway alignment indicator lights (MALSR) and glide slope facility
- 2006 Remove 200 feet of Runway End 2 and parallel taxiway; reconstruct Taxiway C-4; widen Taxiway A and C, and extend Taxiway A
- 2007 Airport Layout Plan (ALP) update
- 2006 West aircraft parking apron reconstruction
- 2006 Instrument landing system
- 2006 Land acquisition and relocation
- 2005 Master drainage study
- 2003 Removal and replacement of airfield electrical vault
- 2003 Extension of Runway End 20 and its parallel taxiway construction
- 2002 Relocation of segments of Pleasant Street; localizer relocation
- 2002 Environmental assessment for runway extension, road relocation, land acquisition and airport development
- 2002 T-hangar access taxiways
- 2002 Taxiway B reconstruction and MITL system replacement
- 2002 Heavy aircraft apron
- 2001 Airport Layout Plan and Exhibit A property line map, with GIS applications
- 2001 Airport auto parking lot reconstruction and expansion



DeKalb Taylor Municipal Airport Aerial Photo

Reference

Tom Cleveland, Airport Manager
DeKalb Taylor Municipal Airport
3232 Pleasant Street
DeKalb, IL 60115
Phone: 815.748.2020
Email: tcleveland@cityofdekalb.com

Marshall County Airport

Lacon, IL

Marshall County Airport is a publicly-owned and publicly-used airport location approximately one mile east of Lacon, Illinois. Hanson has served as the engineering consultant since the mid-1970s and has completed numerous projects, including design and construction of aprons, taxiways and runway extensions; and all planning and environmental documentation.

"The Marshall County Airport Board is very satisfied with Hanson's service, experience and helpfulness." – Charles Allen, President, Marshall County Airport Board

REPRESENTATIVE PROJECTS

- 2013 Construct parallel taxiway
- 2013 Paving, lighting and marking runway extension
- 2012 Grading and drainage for an 800' Runway End 31 extension
- 2010 Environmental assessment and U.S. Corps of Engineers permit
- 2008 Land acquisition services
- 2006 10-place T-hangar construction
- 2005 Construct T-hangar access taxiway for a proposed T-hangar/corporate hangar complex
- 2003 Feasibility study for new 5,500' runway
- 2001 Runway 13/31 porous friction course application and remarking
- 1998 T-hangar development, access taxiway, parking lot and entrance road
- 1997 Construct partial parallel taxiway to Runway End 13
- 1997 Install Automated Weather Observation System (AWOS III)
- 1995 Aircraft parking apron expansion
- 1994 Extend waterline for fire protection
- 1992 Rehab and overlay Runway 18/36
- 1989 Overlay and reconstruction of existing apron
- 1989 Apron expansion



Runway 13/31 Extension

Reference

Barry Logan, Airport Manager
Marshall County Airport
P.O. Box 38
Lacon, IL 61540
Phone: 309.303-0211
Email: manager@marshallcountyairport.com

St. Louis Downtown Airport

Cahokia, IL

St. Louis Downtown Airport, one of Illinois' most active general aviation airports, is located in southwestern Illinois, approximately three miles from downtown St. Louis. Hanson is providing all of the airport planning, environmental, design and construction phase services on a number of projects for the St. Louis Downtown Airport under a 5-year retainer as the airport consultant.

"Your team proves their worth time and time again. We're proud to consider you our partner in progress. We could not have achieved the progress we've made without you." – Robert McDaniel, Airport Director, St. Louis Downtown Airport

REPRESENTATIVE PROJECTS

- Ongoing Land use master plan
- 2013 Reconstruct access taxiway
- 2013 Relocate ditch in runway safety area (RSA)
- 2012 Construct perimeter fence
- 2012 Rehabilitate entrance road and parking lot
- 2011 Reconstruct Runway 12R/30L center section
- 2010 Widen Runway 12R/30L from 100 feet to 150 feet
- 2010 Aircraft rescue and firefighting station (ARFF)
- 2010 Extension of Runway 12L/30R
- 2009 Construct ramp to ramp access road
- 2008 Air Traffic Control Tower interface to vault
- 2008 Construct wetland/land acquisition
- 2007 Taxiway guidance sign improvements
- 2007 Environmental assessment for runway extension
- 2007 Parcel 2 lease boundary survey
- 2004 Mid Coast hangar parcel 1A and 1B boundary surveys
- 2005 Fostaire helicopter parcel boundary survey



Runway 12R/30L Widening



Access Road

Reference

Robert McDaniel, Airport Director
St. Louis Downtown Airport
6100 Archview Drive
Cahokia, IL 62206
Phone: 618.337.6060
Email: rmcdaniel@stlouisdowntownairport.com

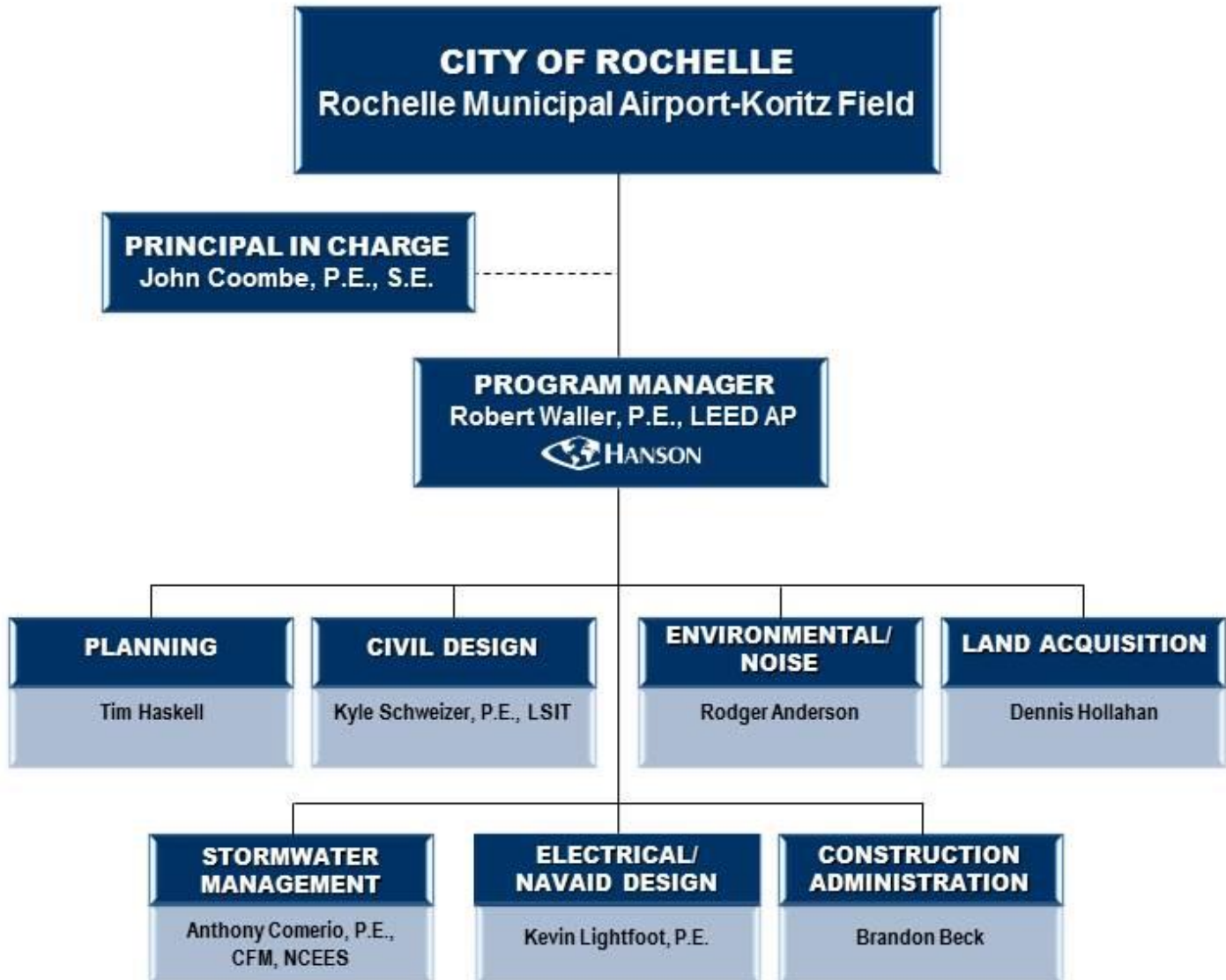
Resumes of Key Personnel

SECTION 4
Resumes of Key Personnel

SECTION 4

Resumes of Key Personnel

Hanson has assigned our most experienced staff for this assignment. Resumes of their background and experience are provided on the following pages.



Mr. Waller, a civil engineer, has experience designing runways, taxiways, aircraft aprons, service roads, hangar sites and parking lots for new and existing facilities. Additionally, he assists in the planning and construction phases of project development. A partial listing of his relevant project experience includes:

**Robert Waller, P.E.,
LEED AP**
Program Manager

Partial Parallel Taxiway to Runway 7/25, Rochelle Municipal Airport, Rochelle, IL. Project manager for a project to construct a partial parallel taxiway west of the main ramp. Project shall include drainage improvements and mitigation, paving, lighting, marking and landscaping items.

Education

B.S./1998/Civil Engineering/University of Illinois at Urbana-Champaign

Professional Registrations

Professional Engineer/IL
Professional Engineer/AK
Leadership in Energy and Environmental Design/LEED

Extend Runway 7/25, Rochelle Municipal Airport, Rochelle, IL. Project manager responsible for the design of 775-ft. extension to Runway 7/25. In addition, the project will require culvert system to flow under the runway extension and alternatives to mitigate potential water increases. Associated work will include drainage, paving, lighting, marking, seeding, and mulching.

Construct Electrical Vault, Rochelle Municipal Airport, Rochelle, IL. Project manager responsible for overseeing electrical design plans, special provision specifications, and construction services for the removal of the existing electrical vault equipment located in the Terminal Building Hangar, and replacing it with a new electrical vault at the Rochelle Municipal Airport.

Airport Layout Plan, Rochelle Municipal Airport, Rochelle, IL. Project engineer for the development of an Airport Layout Plan (ALP) to document efforts to relocate the runway threshold holds due to increased RSA and Object Free Area requirements associated with a larger critical aircraft.

Widen Runway 12R/30L, St. Louis Downtown Airport, Cahokia, IL. Project manager responsible for the design of widening airport's primary runway. The design included a bituminous surface based on loading of a Boeing 757. Associated work included relocation and replacement of affected navigational aids (VASI, REIL, MALS threshold lighting), replacement of the existing medium-intensity lighting system with a high-intensity lighting system, improvements to the electrical vault to accommodate the proposed electrical improvements, subsurface drainage, marking, seeding, and mulching.

"Rob Waller and Kevin Lightfoot did a fabulous job for us."

Robert McDaniel, Airport Director
St. Louis Downtown Airport

Reconstruct Runway 13/31 and Construct Crossover Taxiway, Joliet Regional Airport, Joliet, IL. Project manager responsible for the design of a reconstruction of Runway 13/31 consisting of a bituminous pavement overlay; construction of taxiway to Runway End 13. Associated work included crack repair, cleaning and sealing of bituminous pavements, and incidental landscaping items.

Rehabilitate and Overlay Taxiways C and D, Mount Vernon Airport, Mt. Vernon, IL. Project manager responsible for the reconstruction of parallel Taxiways C and D. The work consisted of surface course removal by pavement milling; large crack repair, cleaning and sealing of bituminous pavements, placement of a new bituminous surface course (wearing surface), pavement marking, and landscaping items. Additionally, a lighting protection system was added to the airport electrical vault and grounding improvements and surge protection was installed at fence gates and within the Terminal Building.

Mr. Schweizer's experience includes working as both field crew chief and project surveyor on a wide variety of sites and projects. He has gained experience with numerous types of projects involving engineering design, planning, surveying, and GIS mapping applications while utilizing various CAD software packages such as AutoCAD, Microstation, and ArcGIS. Additionally he has served as Resident Project Representative on several airport construction projects. A partial listing of his relevant project experience includes:

Partial Parallel Taxiway to Runway 7/25, Rochelle Municipal Airport, Rochelle, IL. Project engineer for a project to construct a partial parallel taxiway west of the main ramp. Project shall include drainage improvements and mitigation, paving, lighting, marking and landscaping items.

Runway 7/25 Extension, Rochelle Municipal Airport, Rochelle, IL. Lead designer for the design of grading, drainage, pavement and lighting improvements to extend Runway 7/25 to 5,000 feet. Project elements included acquisition of approximately 75 acres of land, an extensive hydraulic study of the Airport and surrounding areas, floodplain fill mitigation, pavement expansion, modifications to airfield lighting and nav aids, and coordination with the Illinois State Toll Highway Authority.

Rehabilitation of Runway 13/31, Apron Reconstruction & Expansion, Construction of Taxiway A1, Joliet Regional Airport, Joliet, IL. Engineer of Record for design of improvements to rehabilitate Runway 13/31, reconstruct and expand the general aviation apron, and construct connecting Taxiway A1. Project includes earthwork & drainage improvements, asphalt milling and patching, asphalt paving, pavement marking, and tie-down installation. Asphalt millings were kept onsite for use as a stabilized subgrade.

Security Improvements and Main Entrance Relocation, Abraham Lincoln Capital Airport, Springfield, IL. Airport Representative for \$6.5 million in improvements to non-airfield facilities including a new high-security south entrance to the adjoining Illinois Air National Guard base, and a new relocated main entrance road into Abraham Lincoln Capital Airport from Illinois Route 29. Responsible for overall project coordination between Airport, Contractor, ILANG, and IDOT, and construction observation, documentation, and materials testing on the Airport-owned portion of the project.

Exhibit A, Mount Vernon Airport, Mount Vernon, IL. Preparation of new GIS-based Exhibit "A" Property Line Map for the Airport. Project consisted of incorporating property records obtained from courthouse research, IDOT right-of-way plats, and survey and CAD data to create an attributed parcel map of the Airport-owned properties.

Land Acquisition Improvements, Mount Vernon Airport, Mount Vernon, IL. Survey crew coordinator for boundary and obstruction surveys at the Airport. Land acquisition of one fee simple acquisition. Project consisted of providing negotiations between client and property owner. Property owner was relocated to another property.

Airport Surveys, DeKalb Taylor Municipal Airport, DeKalb, IL. Survey crew chief for boundary survey for DeKalb Taylor Municipal Airport. Acquisition of one fee simple acquisition consisting of two lots. Project consisted of providing negotiations between client and property owner. Updated and resubmitted Exhibit "A" Property Line Map. Property owner relocated to another property.

**Kyle Schweizer, P.E.,
LSIT**
Aviation Engineer

Education

B.S./2007/Civil Engineering/Southern Illinois University at Carbondale

Professional Registrations

Professional Engineer/IL
Land Surveyor in Training/IL
IDOT Documentation of Contract Quantities/IL
HAZWOPER

Mr. Lightfoot, an electrical engineer, has vast experience designing airfield lighting and navigational aid systems, service entrance and power distribution, emergency/standby power systems, motor control systems, lighting, heating and ventilation, lightning protection, surge protection and grounding systems. He has worked on projects for a variety of facilities including airports, railroads, roadways, telecommunication facilities, schools, water and wastewater treatment plants, pump stations and fuel storage and dispensing facilities. A partial listing of his relevant project experiences includes:

Construct Electrical Vault, Rochelle Municipal Airport, Rochelle, IL. Electrical engineer responsible for providing electrical design plans, special provision specifications, and construction services for the removal of the existing electrical vault equipment located in the Terminal Building Hangar, and replacing it with a new electrical vault at the Rochelle Municipal Airport.

Partial Parallel Taxiway to Runway 7/25, Rochelle Municipal Airport, Rochelle, IL. Electrical engineer responsible for project consisting of the construction of a 1,300 foot partial parallel taxiway to Runway 7/25. Provided electrical design plans, special provision specifications, lighting load calculations, and opinion of probable construction costs for the airfield lighting work associated with the project.

Extend Runway 7/25, Rochelle Municipal Airport, Rochelle, IL. Electrical engineer responsible for project consisting of paving, marking, and lighting a 775 foot extension to Runway End 7. The project included the replacement of the medium intensity airfield lighting system, relocation the Runway End 7 PAPI, removal and replacement of the Runway 7 REILS, and the associated cabling and duct work. Provided electrical design plans, special provision specifications, and opinion of probable construction costs for the electrical and lighting work associated with the project.

VADI's and REIL's on Runway 7/25 Installation, Rochelle Municipal Airport, Rochelle, IL. Electrical engineer responsible for providing electrical design plans, special provision specifications, and resident engineering services for the installation of four box PAPI and REIL units on Runway 7/25 with associated power cables and vault work.

Widen Runway 12R/30L, St. Louis Downtown Airport, Cahokia, IL. The project consists of widening Runway 12R/30L from 100' to 150' and the removal of Taxiway B2, including pavement removal, grading, paving, lighting, and marking. Associated work includes the installation of PAPI, adjustment of existing airport homerun cables, reconstruction of the MALSR threshold lights, and improvement to the electrical vault. Provided electrical design plans and special provision specifications for the project.

1500' Runway Extension, St. Louis Downtown Airport, Cahokia, IL. Electrical engineer responsible for providing electrical design plans and special provision specifications for the FAA REIL relocation associated with the runway extension. Electrical design included review of existing record drawings and field survey data to determine existing conditions, coordination with FAA to determine their requirements, cable layout, wiring diagrams and mounting details for REILS, and associated grounding details.

Kevin Lightfoot, P.E. Electrical Engineer

Education

A.S./1983/Science/John A. Logan College
Carterville
B.S./1986/Electrical Engineering/Southern
Illinois University at Carbondale

Professional Registrations

Professional Engineer/IL
Professional Engineer/FL
Professional Engineer/LA
Professional Engineer/IN
Professional Engineer/KY
Professional Engineer/MO
Professional Engineer/MN
Professional Engineer--Electrical
Engineering/NV
Professional Engineer/OH
Professional Engineer--Electrical
Engineering/WA
Professional Engineer/WI

*"Rob Waller and Kevin Lightfoot did a
fabulous job for us."*

Robert McDaniel, Airport Director
St. Louis Downtown Airport

Mr. Comerio's, chief water resources engineer, experience includes designing levees, floodwalls, water control structures, and stormwater detention ponds. His expertise also includes conducting water-supply studies for municipal and industrial clients, performing hydraulic analyses, and permitting of typical roadway bridges, as well as large-scale rail and highway bridges. Additionally, he has training and project experience in the latest hydrology, hydraulic, damage-evaluation and GIS software. A partial listing of his relevant projects include:

Extend Runway 7/25, Rochelle Municipal Airport, Rochelle, IL. Water resources engineer. The project will require culvert system to flow under the runway extension and alternatives to mitigate potential water increases. Associated work will include drainage, marking, seeding, and mulching. The scope of services includes the preparation of plans and specifications, Opinion of Probable Cost and other associated calculations, and correspondence required by the IDOT of Aeronautics for inclusion on a State letting – to construct the grading and drainage associated with the subsequent paving projects to extend Runway 7/25 to 5,000-ft.

Runway Extension, Marshall County Airport, Lacon, IL. Project engineer for the modeling and design of a stream enclosure structure. The airport needed to extend their runway to accommodate larger planes. An existing stream at the end of the existing runway had limited the development of plans for the extension. Through detailed survey, hydrologic and hydraulic modeling, it was shown that a medium sized structure could be designed and constructed that would meet or exceed IDNR/OWR regulations.

Runway Safety Area (RSA) Correction, Mount Vernon Airport, Mount Vernon, IL. Water resources engineer providing design services for the grading and drainage for Runway 5/23 RSA corrections. The project consists of correcting an existing RSA nonconformance by placing pavement on Runway End 23 to replace pavement to be removed from Runway End 5 in an effort to correct the nonconformance. The project will include a drainage structure to convey surface drainage beneath the RSA off Runway End 23 that requires a drainage analysis that will support the Sponsor's proposed action contained within an ongoing environmental assessment. The drainage work within this agreement is the first of multiple phases of effort for this project.

Master Drainage Plan Update, Pompano Beach Air Park, Pompano Beach, FL. Water resources engineer. The project includes field reconnaissance, surveys and review of existing data, preparation of analyses, design reports, feasibility studies and/or design alternative recommendations, update of the SWMPPP, and meeting and presentations before stakeholder groups. An existing well field along the western boundary of the airport provides drinking water to the City of Pompano Beach. Well protection zones have been established for these well fields. As part of our study, we will collect additional information about the well field to assure consistency with FAC 62-521 and Broward County well protection criteria.

**Anthony Comerio, P.E.,
CFM, NCEES**
Water Resources Engineer

Education

B.S./1996/Agricultural Engineering/University of Illinois at Urbana-Champaign

Professional Registrations

Professional Engineer/IL
Professional Engineer/MO
Professional Engineer/LA
Professional Engineer/IA
Certified Floodplain Manager/IL
National Council of Engineering
Examiners/NCEES

Professional Affiliations

American Society of Civil Engineers
Illinois Association for Floodplain and
Stormwater Management
Association of Conservation Engineers (ACE)
Upper Mississippi, Illinois & Missouri Rivers
Association (UMIMRA)
Illinois GIS Association
Society of American Military Engineers

Mr. Hollahan is a land acquisition specialist. He is currently providing land acquisition services to the Marshall County Airport, Lacon, IL and DeKalb Taylor Municipal Airport, DeKalb, IL and has previously provided land acquisition services to the Rochelle Municipal Airport, Rochelle, IL.

Prior to joining Hanson, he served as the section chief, land acquisition and property management, for the Illinois Department of Transportation (IDOT).

As section chief, he was responsible for ensuring compliance with federal and state eminent domain laws and policies for appraisals, negotiations, condemnations and relocations of displaced persons and property management and the timely and accurate title clearance of 900 - 1800 negotiated and acquired parcels annually. He managed and edited the Land Acquisition Policies and Procedures Manual and wrote modifications to negotiation and acquisition chapters; provided guidance to highway districts to ensure delivery of district right-of-way programs; and managed consultant services procurements, including land title insurance services, valued at \$6.5 million annually. Mr. Hollahan served in this position from December 2002 to February 2008.

As special assistant chief counsel, he provided legal counsel to the Division of Highways and the Division of Aeronautics on all land acquisition and property management issues; and drafted land conveyance documents, leases, mortgages and contracts. Most significantly, Mr. Hollahan served as legal counsel to the Division of Aeronautics for 66 land purchases for the South Suburban Airport in Will County, Illinois to include escrow closings and Section 1031 exchanges. Mr. Hollahan served in this position from March 2001 to November 2002. During his private law practice, He presided over several real estate closings as title insurance agent and escrow agent and represented property owners during property line disputes and easement disputes.

Since joining Hanson, Mr. Hollahan has provided project management for several projects, including IDOT's District 6 and District 9 district-wide land acquisition services contracts, which include appraisals, review appraisals, negotiations, and relocation assistance, and the City of Rockford's Harrison Avenue relocation plan. Each project has required compliance with the Federal Uniform Relocation Assistance and Real Property Acquisition Policies Act of 1970.

Dennis Hollahan

Land Acquisition Specialist

Education

B.A./1985/Economics and Political Science/Yale University
J.D./1997/Law/University of Notre Dame Law School
/2004/Land Titles/IRWA Course 801
/2004/Relocation Assistance/IRWA Course 501
/2004/Business Relocation/IRWA Course 502
/2005/Managing the Consultant Process/IRWA Course 303
/2007/Easement Valuation/IRWA Course 403
/2002/Eminent Domain Training for Attorneys & Appraisers/NHI Course 141036
/2004/Eminent Domain Practice/IICLE
/2006/Eminent Domain Update 2006/IICLE
/2005/Second Annual Real Estate Short Course/IICLE
/2006/Residential Real Estate Transactions/IICLE
/2001/Land Use Institute: Planning, Regulation, Litigation/American Law Institute

Professional Registrations

Attorney At Law/IL

Professional Affiliations

Illinois State Bar Association

"Dennis offered solution to various extraordinary circumstances allowing us to complete the project."

Chris Peters, Waukegan Port District

Mr. Anderson, a biologist, has experience conducting habitat assessments, environmental site assessments, noise and air quality analyses and archeological surveys. Additionally, he has performed threatened and endangered species surveys and prepared wetland delineation and mitigation plans. A partial listing of his relevant project experience includes:

Environmental Assessment for Runway 7/25 Extension, Rochelle Municipal Airport, Rochelle, IL. Environmental lead. Responsible for preparing the environmental assessment for the extension of Runway 7/25. Additional tasks included conducting a public hearing for improvements at the airport that included the approval of mitigating impacts within a floodplain to properly design a culvert system to flow under the runway extension.

Environmental Assessment, Mount Vernon Airport, Mount Vernon, IL. Environmental lead for an environmental project pursued to obtain National Environmental Protection Act (NEPA) approval to construct the improvements necessary to achieve runway safety area (RSA) compliance. Currently, the RSA off of Runway End 5 is no longer compliant, with penetrations to the RSA consisting of a State highway and the airport perimeter fence resulting from changed criteria since its original construction in the early 1970's. The improvements shall include a 700-ft runway threshold relocation on both runway ends, realignment of the associated crossover taxiway on Runway End 5, and construction of a parallel taxiway extension and new crossover taxiway on Runway End 23. Associated work shall include the relocation and replacement of impacted navigational aids and airfield lighting.

Environmental Review, Marshall County Airport, Lacon, IL. Environmental specialist. Prepared an environmental review as part of the feasibility study for runway alternatives at the Airport.

Environmental Assessment, St. Louis Downtown Airport, Cahokia, IL. Environmental lead. Responsible for preparing the environmental assessment, Section 404 Permit Application and Inter-governmental agreement for improvements at the airport which included installing over 600-feet of culverts in a major drainage canal in the Mississippi River flood control system.

Phase I Environmental Site Assessment for Land Acquisition, DeKalb Taylor Municipal Airport, DeKalb, IL. Environmental specialist. Responsible for conducting an ASTM phase I environmental site assessment for a 125-acre parcel adjacent to the DeKalb Taylor Municipal Airport.

Phase I Environmental Site Assessment for Land Acquisition, Edgar County Airport, Paris, IL. Environmental specialist. Responsible for conducting an ASTM phase I environmental site assessment for a 130-acre parcel adjacent to the Airport.

Airport Improvements, Carmi Municipal Airport, Carmi, IL. Environmental specialist. Responsible for completing wetland determination for potential Section 404 permit application and wetland determination under Section 404 guidelines.

Rodger Anderson Environmental Specialist

Education

B.S./1995/Animal/Aquatic Ecology/Iowa State University

Professional Affiliations

Illinois Lakes Management Association
American Fisheries Society-Illinois Chapter
American Fisheries Society-Water Quality Section
American Fisheries Society

"Rodger Anderson worked miracles on this project from start to finish! He went far beyond our expectations. His innovative ideas and expert guidance made it all possible."

Robert McDaniel, Airport Director,
St. Louis Downtown Airport

Mr. Haskell, a senior aviation planner, primarily serves the aviation market. His vast experience includes conducting airport feasibility and environmental studies, preparing airport layout and master plans and acquiring grants and funding for both Primary and General Aviation Airports. Additionally, he has experience in airport site selection and is well-versed in FAA National Plan of Integrated Airport Systems projects.

Airport Layout Plan, Rochelle Municipal Airport, Rochelle, IL. Aviation planner responsible for the development of an Airport Layout Plan (ALP) to document efforts to relocate the runway threshold holds to alleviate an existing Runway Safety Area (RSA) issue and to support a runway extension. The process included evaluating alternatives to utilize the existing runway location or relocate the runway to meet FAA runway safety area design standards. The ALP narrative report included a justification and alternatives to support a runway extension.

Airport Layout Plan, DeKalb Taylor Municipal Airport, DeKalb, IL. Aviation planner responsible for the development of an Airport Layout Plan to document improvements made to the existing airport facilities. Work included providing graphical inventory of existing and desired future airport improvements. Determining and tabulating of airport data and providing a detailed analysis of approaches, elevations and grades, required dimensions, permissible land use, and obstructions. Project included preparation of a Modification-of-Standards to accommodate a minor deviation of the Runway Object Free Area and a narrative report to support the installation of a Precision Approach System.

Airport Layout Plan, Joliet Regional Airport, Joliet, IL. Aviation planner responsible for the development of an Airport Layout Plan to document future airfield and land side development. Process included the evaluation of appropriate runway length and width alternatives to meet FAA runway safety area design standards and the implementation of declared distances to maximize the existing pavement. Land side alternatives included the identification of land available for aviation support facilities and property appropriate for lease as non-aviation use. Alternatives included the evaluation of off-airport land and recommendations for land acquisition to support future facilities and mitigation of airspace obstructions.

Airport Layout Plan, Mount Vernon Municipal Airport, Mount Vernon, IL. Project manager involved with the programming for development of an update to the ALP and CIP for the Airport. Project was initiated to specifically address: RSA and Object Free Area criteria for Runway 5/23; implementation of declared distances as an interim step to resolve RSA for Runway 5; evaluation of obstructions and appropriate displacement of Runway 5 approach threshold; evaluation of runway length alternatives; wetland delineation; airfield drainage; and terminal area development alternatives.

Airport Layout Plan, Morris Municipal Airport, Morris, IL. Aviation planner responsible for the development of an ALP to document efforts to relocate the runway threshold holds to alleviate an existing Runway Safety Area (RSA) issue. The process included evaluating alternatives to: 1) utilize the existing runway location – and extend, 2) construct a runway parallel and east of the existing – and convert existing runway to a taxiway, and 3) planning effort to identify orientation and length of a crosswind runway to serve small general aviation aircraft.

Tim Haskell

Senior Aviation Planner

Education

B.S./1977/Aviation Administration/Middle Tennessee State University
MEd./1979/Education/Middle Tennessee State University

Professional Affiliations

Airports Council International - North America
American Association of Airport Executives
Adjunct Faculty: Middle Tennessee State University and Southern Illinois University

"Mr. Haskell went above and beyond what was required with our recent ALP update. Our Airport Authority is extremely pleased with his service and coordination of the project with the Tennessee Aeronautics Division."

Jon Glass, Executive Director
Tulahoma Regional Airport Authority

Mr. Beck, a Construction Project Specialist, has participated in all aspects of construction projects from the initial surveying through the design and drafting of construction plans and field staking. A partial listing of relevant projects include:

Obstruction Removal on Runway End 2, Monmouth Municipal Airport, Monmouth, IL. Task manager for the construction phase of obstruction removal on Runway End 2. Responsible for select clearing based upon a set QTY and penetration into approach surface.

General Aviation Apron Rehabilitation, Logan County Airport, Lincoln, IL. Task manager for the design of the rehabilitation of the general aviation apron. Associated items of work include remove and replace bituminous pavement, bituminous pavement milling, bituminous paving, marking, seeding and mulching.

Runway 1/31 P.F.C. Overlay, Marshall County Airport, Lacon, IL. Resident engineer for the P.F.C. overlay of Runway 13/31. Associated items of work included bituminous crack repair, shoulder adjustments, porous friction course and pavement marking.

Runway 20 Extension, DeKalb Taylor Municipal Airport, DeKalb, IL. Design engineer for a 2,225-foot extension to Runway 20 and parallel taxiway. Associated work includes unclassified excavation, drainage improvements, bituminous pavement, lighting, marking, seeding and mulching.

Pleasant Street Road Relocation, DeKalb Taylor Municipal Airport, DeKalb, IL. Task manager for the design of the Pleasant Street relocation. Project consists of the relocation of segments of Pleasant Street. Associated work includes signing, marking, seeding, mulching, drainage, traffic control and placement of sanitary sewer lines.

Partial parallel Taxiway G and Crossovers Construction, Decatur Airport, Decatur, IL. Resident engineer for the construction of partial parallel Taxiway G. Construction began in the fall of 2003. Items of work in 2003 included unclassified excavation, pavement removal and drainage improvement. Items of work in 2004 included the continuation of the work from 2004 as well as subgrade stabilization, bituminous paving, PC concrete paving, lighting and sign installation, seeding and mulching.

Bituminous Overlay, Vandalia Municipal Airport, Vandalia, IL. Resident engineer for the bituminous overlay of the T-hangar taxiways. Associated items of work included bituminous pavement removal, bituminous pavement milling, PCC pavement removal, drainage improvements, earth fillets, seeding and mulching.

Underdrain Pipe Installation on Existing Aircraft Apron, Macomb Municipal Airport Macomb, IL. Task manager for the design of the installation of underdrain pipe on the existing aircraft apron. Associated items of work include removing and replacing bituminous pavement, marking, seeding and mulching.

Brandon Beck
Construction Project
Specialist

Education

A.A./2000/Illinois Central College
B.S./2002/Construction/Bradley University

Professional Registrations

Transportation Worker Identification
Credential/

Mr. Coombe serves as Hanson's executive vice president and chief operating officer. As chief operating officer, he directs all administrative operations for the company. He maintains responsibility for overseeing Hanson's risk management litigation and professional liability insurance administration. He also serves as director of Hanson's newly created Transportation Services division. In this role, he oversees the company's business development efforts and operations for the following markets: departments of transportation and aviation; toll highways and railway. He has more than 27 years of experience in administering and managing Hanson's transportation planning, design and construction projects and overall company operations. Throughout his career, he has managed many multidiscipline projects and has assumed leadership roles within Hanson and professional and civic organizations. A partial listing of relevant projects include:

South Suburban Airport, Will County, IL. Principal-in-charge for land acquisition, relocation assistance and property management services for the proposed 24,000 acre airport. Responsible for negotiating the acquisition of all property in the inaugural area of 4,200 acres. All surveying data, and acquisition and property management documents such as titles, appraisals, offer letters, contracts, negotiator reports and closing documents, are input into a GIS-linked database. Parts of the database are available to property owners through the Web site. Additional services include environmental assessments and appraisals; an extensive public involvement program including development and maintenance of a Web site; and an exhibit "A" property line map that shows the parcels within the footprint, along with the history of the ownership and acquisition for the parcels.

Abraham Lincoln Capital Airport, Terminal Study, Springfield, IL. Principal in charge responsible for conducting field verification and information surveys for the terminal study master plan. The purpose of the survey was to identify, examine and report on the physical condition of the terminal systems and components, code violations and noticeable maintenance concerns needing immediate attention. Surveys were completed for mechanical, electrical and plumbing systems; building components; hazardous materials; and architectural issues. Also surveyed the facility for compliance with the Americans with Disabilities Act.

Abraham Lincoln Capital Airport, Airport Commerce Business Park Development Plan, Springfield, IL. Principal in charge responsible for overseeing the preparation of a development plan for the Commerce Business Park. The park will be sited on over 200 acres of land and will include a market analysis, recommended lot size and phasing package in addition to a conceptual layout. The plan included a general marketing plan which included an identity package with the park logo and signage. As a part of the planning process, a general infrastructure plan that includes roadway and utility locations and configurations was completed, along with a construction cost estimates.

John Coombe, P.E., S.E. Principal in Charge

Education

B.S./1975/Civil Engineering/University of Notre Dame
M.S./1978/Civil Engineering/University of Illinois at Urbana-Champaign

Professional Registrations

Professional Engineer/IL
Structural Engineer/IL
Professional Engineer/IN
Professional Engineer/KY
Professional Engineer/MO
Professional Engineer/NE
Professional Engineer/OK
Professional Engineer/OH
Professional Engineer/MI

Professional Affiliations

American Railway Engineering and Maintenance-of-Way Association
American Society of Civil Engineers
ASCE - West Central Branch, Central Illinois Section
American Council of Engineering Companies of Illinois (ACEC/Illinois)
Illinois Association of Highway Engineers
Illinois Society of Professional Engineers
National Society of Professional Engineers
Greater Springfield Chamber of Commerce
Design Professionals Risk Control Group (DPRCG)

References

Chris Collins, Airport Director
Mount Vernon Airport Authority
100 Aviation Drive
Mount Vernon, IL 62864
Phone: 618.244.7900

Tom Cleveland, Airport Manager
DeKalb Taylor Municipal Airport
3232 Pleasant Street
DeKalb, IL 60115
815.748.2020

Barry Logan, Airport Manager
Marshall County Airport
P.O. Box 38
Lacon, IL 61540
Phone: 309.303.0211

Robert McDaniel, Airport Director
St. Louis Downtown Airport
1680 Sauget Industrial Parkway
Cahokia, IL 62206
Phone: 618.337.6060

Additional Information

Long-standing relationships and proven reputation with the Federal Aviation Administration (FAA) in Washington, D.C., Great Lakes Region in Chicago, and the Illinois Department of Transportation-Division of Aeronautics and other state and federal regulation and review agencies, allow us to direct your issues to appropriate agency personnel for the necessary attention and response.

For nearly 40 years, our company has provided design and construction engineering on many airport projects involving the FAA. During that time, our staff has obtained a thorough understanding of FAA regulations and its policies and procedures, including a historical background of why new regulations or policies and procedures have been adopted or modified. We use our understanding of each regulation, policy, or procedure, as well as our historical understanding of any previous requirement to benefit our clients and their projects.



Additionally, most of the projects have been partially funded through the FAA. We have assisted our clients in preparing grant applications and securing funding from the FAA. Our knowledge of the regulations, policies and procedures extends to the financing of projects by the FAA and what needs to occur, when it needs to occur, and how it needs to occur during the design process through construction and project commissioning to close out.

Because our past projects have been located in different regions of the FAA, we have also become familiar with the different interpretations that can occur between regions. That knowledge has been useful to help resolve issues important to our clients and their projects. Additionally, we know when an issue may obtain a slightly different interpretation, and we can raise that issue to the attention of the appropriate people for resolution at the proper time in the project schedule to mitigate any problems before they occur.

FIRM'S RESPONSIBILITIES TO OWNER

Hanson's ability to obtain repeat business from its clients is a result of making special efforts. Hanson has been the airport engineer for many of our existing clients for more than 20 years. We take pride that our clients look to us not only as partners in their improvement programs but as an extension to their own staff.

Hanson provides complete services to our clients, including planning, design, construction observation services and other services that may be requested. Our success on any one project is measured by the client's satisfaction.

The added value that Hanson will provide to the Rochelle Municipal Airport-Koritz Field includes:

Responsiveness: Robert Waller, P.E., LEED AP will be assigned as your point of contact for the purpose of close coordination and cooperation with you and your staff. Our personnel will be available upon your request for meetings, presentations, and on-site visits. We encourage our clients to call us as questions or comments arise.

Competency of Staff: We invite you to research our work efforts on completed projects to get an idea of client satisfaction. We are proud of our reputation and work accomplishments, which starts with having high-caliber, professional staff members. We are not just looking for a solution for your projects, but we are looking for the best solution. As your engineering firm, Hanson will continue to assist you in developing a fundamentally sound and economically feasible airport improvement program.

Budgets: Our staff has a reputation for developing accurate project estimates that will be within an acceptable range of the contractor's bid. Many years of experience in project estimating allows our staff the ability to provide dependable estimates for budgetary purposes.

On Time: The experience of our team employee pool ensures that we will be able to meet your schedule. We have personnel available in the key disciplines required, and our references will attest to our on-time services.

Project Grants and Funding: Our staff has an understanding of the FAA's Airport Improvement Program. The knowledge of the program and our excellent working relationship with the state and federal professionals will provide the Airport the ability to present your projects in a manner that will optimize its consideration for funding.

Minimizing Impacts to Airport Operations: Operationally, we recognize our job is to design and implement each project with the minimum possible impact to the airport. We will review construction staging for each project, paying special attention to meeting the airport customer's needs.

Airport Services: Hanson will assist you with your airport program from initial concept planning through construction and maintenance with comprehensive program management services. Your program development and funding efforts will benefit from the personal attention of your project management team. Additionally, support staff of highly respected professionals in the aviation field whose careers span decades are readily available to provide consultation and advice.

Our team will assist you by assembling drawings, cost estimates and other documentation needed to request funding. If necessary our staff stands ready to accompany you on visits to the FAA, IDOT, or your legislator's office to present your program and help them better understand your concerns and needs of the Rochelle Municipal Airport-Koritz Field.

QUALITY ASSURANCE PROGRAM

Hanson has a formal corporate Quality Assurance (QA) program that is incorporated into various projects. Our philosophy is that quality is not an "add on" at the end of a project. While review guides and checklists can be used to detect document errors, the firm's approach is to prevent errors or detect them immediately. Hanson's project personnel are knowledgeable about the company's QA management system. While experienced staff members monitor quality assurance throughout the project, their primary focus is to see that the proper procedures are followed.



It is the company's policy to perform engineering and technical services according to generally accepted practices throughout the A/E industry and with applicable quality assurance programs approved by the company's quality assurance officer and president. The policy is designed to be implemented through two possible approaches--one using quality assurance project plans (QAPP) that are written for specific projects and the second using the more generalized corporate QA program. These two approaches encompass those projects that contractually mandate project-specific quality assurance programs and those projects that do not, respectively.

By providing these two approaches, Hanson can select the most appropriate quality assurance/quality control requirements. This allows the company to meet the client's needs and expectations while also maintaining economic considerations.

Hanson's QA program, a management system, ensures that engineering activities are conducted in a planned and controlled manner and that there is a written, signed record to that effect. Performing quality work and implementing a quality assurance program are the responsibilities of all Hanson's staff members and subconsultants and can be achieved only through a cooperative effort and commitment to quality by all personnel.

Hanson also has an established Corporate Quality Assurance manual (CQAM) describing its QA program and the program's requirements. The manual discusses the relationships and general approach taken in implementing QA and technical procedures.

This manual is produced under the direction of the corporate quality assurance/quality control officer, who is responsible for periodic revisions to address changes in applicable guidelines and changing organizational needs. Hanson's president and chief technical officer are responsible for providing final approval of the manual and its revisions.

Hanson is dedicated to meeting Disadvantaged Business Enterprise (DBE) goals that are established by the District where applicable. As each scope is developed for specific projects where a DBE expectancy or goal is established Hanson will make good faith effort to subcontract with DBE firms certified by the Department of Transportation.

AFFIRMATIVE ACTION PROGRAM

It is the policy of Hanson Professional Services Inc. to provide Equal Employment Opportunity through a program of positive action affecting all employees. This policy is in accordance with the Civil Rights Act of 1964, Equal Employment Act of 1972, and all other applicable laws. Hanson Professional Services Inc. also strives to assure compliance with the Illinois Fair Employment Practices Act, the Illinois Human Rights Act, and other orders pertaining to equal employment opportunity.

Policy includes recruiting, hiring, training, upgrading, promoting, and disciplining without discrimination on the basis of race, color, religion, national origin, sex, age, marital status, handicap, sexual preference, or political affiliation. Hanson Professional Services Inc. has developed procedures to assure this policy is understood and carried out by managerial, administrative, and supervisory personnel. Hanson Professional Services Inc. will utilize applicants for any job vacancies.

ASSIGNMENT OF RESPONSIBILITY: Hanson Professional Services Inc. has undertaken a positive Affirmative Action Program to effectively implement and enforce this policy at all times. The EEO officer or person designated for monitoring the company's Affirmative Action Program is: John P. Coombe.

PROCEDURES FOR DISSEMINATION OF POLICY: A copy of this statement is posted in the main office at Hanson Professional Services Inc. and will be given to any employee, vendor or subcontractor.

UTILIZATION ANALYSIS: Hanson Professional Services Inc. will monitor its workforce and job classifications. It will analyze availability and under-utilization and respond accordingly. Hanson Professional Services Inc. will attempt to recruit in a 50-mile radius encompassing nearby cities in an effort to attract qualified minorities.

GOALS AND TIMETABLES: Hanson Professional Services Inc. will identify those areas within its workforce in which minorities and women are being under-utilized and set up a system of goals and timetables for correcting the deficiencies.

SYSTEM FOR MONITORING COMPLIANCE AND RECRUITMENT OF WORKFORCE: When adding new employees, Hanson Professional Services Inc.'s policy is to utilize qualified minorities and females. If one is not available any qualified help is then used. If normal employment sources do not provide these goals, other sources will be used. Hanson Professional Services Inc. supports EEO programs.

SYSTEM OF RECORDS AND ANNUAL SUMMARY: Hanson Professional Services Inc. will monitor applicant data, employee records and job descriptions to assist in its affirmative action efforts.

Sincerely,



EQUAL EMPLOYMENT OFFICER
(Signature)

January 14, 2013
DATE

IDOT Prequalification for Airport Work

SECTION 7
IDOT Prequalification for Airport Work

SECTION 7

IDOT Prequalification for Airport Work

Hanson is pre-qualified with the Illinois Department of Transportation in various airport-related categories, including Airport Special Services, Airport Design and Airport Construction Inspection. Our Statement of Experience and Financial Condition (SEFC) Prequalification Form is attached.

SEFC PREQUALIFICATION			
FIRM: HANSON PROFESSIONAL SERVICES INC.	SOI CODE: HANSON	DATE: 10/18/11	
PLANS, SPECIFICATIONS & ESTIMATES			
1. FREEWAYS:	X	11. MOVABLE BRIDGE:	
2. ROADS AND STREETS:	X	12. STEEL GIRDER BRIDGE:	X
3. AER. PLANNING & SPECIAL SERVICE	X	13. TIED ARCH BRIDGE:	
4. AER. DESIGN:	X	14. SEGMENTAL CONCRETE BOX GIRDER BRIDGE:	X
5. AER. CONSTRUCTION INSPECTION:	X	15. CONT/CANT TRUSS BRIDGE:	X
6. HIGHWAY STRUCTURE:SIMPLE:	X	16. CABLE STAYED GIRDER BRIDGE:	A
7. HIGHWAY STRUCTURE:TYPICAL:	X	17. TRAFFIC SIGNALS:	X
8. HIGHWAY STRUCTURE:ADV TYPICAL:	X	18. LIGHTING:TYPICA	A
9. HIGHWAY STRUCTURE:COMPLEX:	X	18a.LIGHTING:COMPLEX	A
10. RAILROAD BRIDGE:	X	19. PUMPING STATION:	X
STUDIES			
20. LOCATION DRAINAGE:	X	23. SAFETY STUDIES:	X
21. TRAFFIC STUDIES:	X	24. FEASIBILITY STUDIES:	X
22. SIGNAL COORDINATION & TIMING (SCAT):			
HYDRAULIC REPORTS			
25. WATERWAYS TYPICAL:	X	27. PUMP STATION:	X
26. WATERWAYS COMPLEX	X		
LOCATION AND DESIGN STUDIES			
28. REHABILITATION:	X	30. NEW CONST./MAJ RECONST:	X
29. RECONST./MAJ REHAB:	X		
ENVIRONMENTAL STUDIES & REPORTS			
31. E.A.:	X	32. E.I.S.:	X
SPECIAL DESIGN STUDIES			
33. MASS TRANSIT:	X	34. RAILWAY ENGINEERING:	X
SPECIAL SERVICES			
35. SURVEYING:	X	44. ARCHITECTURE:	X
36. AERIAL MAPPING:		45. LANDSCAPE ARCHITECTURE:	
37. GENERAL GEOTECHNICAL SERVICES:	X	46. HAZARDOUS WASTE:	
38. COMPLEX GEOTECHNICAL/MAJOR FOUNDATION:	X	47. ASBESTOS ABATEMENT SURVEY:	
39. SUBSURFACE EXPLORATIONS:	X	48. CONSTRUCTION INSPECTION:	X
40. STRUCTURE GEOTECHNICAL REPORTS:	X	49. QA COMPLETE:	
41. ELECTRICAL ENGINEERING:	X	50. QA HMA & AGGREGATE:	
42. MECHANICAL ENGINEERING:	X	51. QA PCC & AGGREGATE:	
43. SANITARY ENGINEERING:	X	52. BITUMINOUS MIX DESIGNS	
		53. SUBSURFACE UTILITY ENGINEERING:	
<p>X PREQUALIFIED</p> <p>A YOU INDICATED "IN-HOUSE" CAPABILITY IN THESE AREA OF THE "SEFC" BUT WE FOUND NO DETAILED INFORMATION AS REQUESTED ON WHICH TO BASE OUR EVALUATION.</p> <p>P PENDING FUTHER REVIEW</p> <p>S PREQUALIFIED, BUT WILL NOT ACCEPT STATEMENTS OF INTEREST</p> <p>L LOSS OF PREQUALIFICATION</p>			

Firm Name: **HANSON PROFESSIONAL SERVICES INC.**

Date: 08/08/11

Determination: Prequalification requested at the level of: **EIS**
Prequalification granted at the level of: **EIS**

The following items have been noted in our review of your Environmental Questionnaire.

If you wish to submit additional documentation, please do so as soon as possible.

ENVIRONMENTAL STAFF

- Individuals assigned disciplines not adequately qualified.

Mr. Brandon Nolin (subconsultant employed by Houseal Lavigne Associates) does not meet our criteria for prequalification in Community Impacts.

OTHER

- Based on our review of your submittal dated June 28, 2011, we have determined that your firm remains prequalified at both the EA and EIS levels.

- The attached list shows the level at which each member of your staff, and subconsultant staff, has been prequalified. Please refer to this list when submitting Statements of Interest on Professional Transportation Bulletin Projects.

PREQUALIFIED ENVIRONMENTAL STAFF

08/08/11

FIRM HANSON PROFESSIONAL SERVICES INC.

Level Requested: EIS Level Granted: EIS

This list identifies individuals who meet the criteria for environmental lead(s) and environmental disciplines, including the level of report that each person is qualified to perform.

Only these individuals may be included in your firm's Statements of Interest for projects advertised in Professional Transportation Bulletins. Please note that key personnel changes must be reported in writing to the Consultant Unit within 15 working days of the change.

Environmental Leads:

Lead(s)	EA	EIS
1. Seals, Kevin		Seals, Kevin
2. Anderson, Rodger		
3. Bushur, Jeffrey		
4.		
5.		
6.		

Environmental Disciplines:

Name	EA	EIS	Subconsultant
Community Impacts			
1. Holan, Craig	<input type="checkbox"/>	<input checked="" type="checkbox"/>	
2. Gardner, Daniel	<input type="checkbox"/>	<input checked="" type="checkbox"/>	Houseal Lavigne Assoc.
Ecology			
1. Sunley, Jennifer	<input checked="" type="checkbox"/>	<input type="checkbox"/>	
2. Seals, Kevin	<input type="checkbox"/>	<input checked="" type="checkbox"/>	
3. Moushon, Greg	<input checked="" type="checkbox"/>	<input type="checkbox"/>	
Noise			
1. McLaughlin, Steve	<input checked="" type="checkbox"/>	<input type="checkbox"/>	
2. Anderson, Rodger	<input type="checkbox"/>	<input checked="" type="checkbox"/>	
Water			
1. Thompson, Mark	<input type="checkbox"/>	<input checked="" type="checkbox"/>	
2. Seals, Kevin	<input type="checkbox"/>	<input checked="" type="checkbox"/>	
3. Bushur, Jeff	<input checked="" type="checkbox"/>	<input type="checkbox"/>	

Prequalified staff for Public Involvement

Anderson, Rodger
Moll, James
Seals, Kevin

Prequalified staff for Technical Writing

Bushur, Jeffrey
Moll, James
Moushon, Greg