
2015

ROCHELLE POLICE DEPARTMENT ANNUAL REPORT





IN MEMORIAM

Kenneth Ray Woolbright, 64, of Greenwood, Arkansas passed quietly into the arms of Jesus on May 22, 2015. He was born to Rayburn and Geneva Woolbright in Wynne, Arkansas in 1950. He served in the army for 6 years finding his calling in the military police while in Germany. He became an Ogle County Sheriff's Deputy and found love with a police dispatcher who became his wife of 39 years.

Ken joined the Rochelle, Illinois police department in 1979. Ken blossomed as a detective with his best partner and lifelong friend Rick Olson. They served under Winston Brass, chief of Police in Rochelle, Illinois and gained the respect and admiration of all those who knew them.

Professionally they were wholly dedicated to serve and protect but they never failed to inject humor and compassion. People whom Ken had arrested often thanked him later for helping to straighten out their lives. Ken and Rick's unique style of law enforcement was a testament to their true character. They held themselves to high standards because of their faith in the Lord and believing that to serve was paramount. Ken and Rick protected the people of Rochelle just as they did their own families. When Ken was chosen as Chief in 2001, Rick had already become the Chief of Police in Sandwich, Illinois. After serving as the Chief of Police Rick became Mayor of Sandwich and enlisted Ken's help as interim Police Chief in 2013 until a permanent replacement was hired.

Ken and Rick's almost daily communication will never end; it is ingrained in the heart. Ken was proud of his team in the Rochelle police department. Rob Buck, his assistant chief had been a friend since he was 15 years old. Together they implemented the most approachable police department with insistence that officers walk downtown and know who they were serving; this also allowed the community to know each officer in a personal manner. Ken's personal secretary, Rene Smith-Schwartz along with communications supervisor Sandy Sullivan proved invaluable to him. Their professionalism, enthusiasm and fun loving natures lifted the spirit of the department on a daily basis.

Ken's family migrated to Arkansas to be nearer to Dad's advice and wisdom. Carla is honored and thankful to have been his wife for 39 years. Daughter Monica with husband Jason Freeman presented Ken with Dakotah, 18, Delaney, 17 and Mackenzie, 13. Recently Ken attended Dakotah's graduation from Bentonville High School. They reside in Bella Vista, Arkansas. Son Clint and Kristin (Mosbarger) Woolbright waited a few years to give Pop his grandson Shannon, 5. Shannon spent Ken's last day on earth helping Ken make poker decisions before falling asleep, cuddled on his lap.

He was preceded in death by his parents, two sons, Kenneth Ray Jr. and Nathaniel and by one grandson, Noah. Ken was of the Christian faith.

**CHIEF
ERIC HIGBY**



Higby joined the department in 1996 and has spent time in both patrol and investigations divisions. He was appointed chief on September 25, 2009. He has a Bachelor's Degree in Law Enforcement Administration, and is responsible for the day-to-day operations of the department. He is a graduate of Northwestern University's School of Police Staff and Command. In 2008 he attended ten weeks of training at the 234th session of the F.B.I. National Academy in Quantico, Virginia. Chief Higby has recently received training in Freedom of Information, School Violence, and Media Relations.



**ADMINISTRATIVE AIDE
RENÉ SCHWARTZ**

A.A. Schwartz joined the department in 2001. She is the assistant to the Chief of Police and handles department records, statistical data, annual reports, correspondence, court scheduling, website maintenance, CAD & Records Management System administrator and training in Freedom of Information. She holds a Bachelor's Degree in Business Administration with a minor in Human Resources and served four years in the United States Air Force.



ADMINISTRATION



**DETECTIVE SERGEANT
JEFF LEININGER**

Det. Sgt. Leininger joined the department in 1998. He supervises the detective division, field training program, and the evidence room. He assists with maintenance of the department's website, and serves as the department photographer. Det. Sgt. Leininger has received specialized training in sex offender registration, homicide investigations, gang crime investigations, and serves as president of the Ogle County Crime Stoppers Board. He is a graduate of Northwestern Illinois University's School of Police Staff and Command.



Detective Kaltenbach joined the department in 2004. He has an Associate's Degree in Criminal Justice, is a member of the Emergency Response Team, and is a Taser instructor, O.C. instructor, Hunter Safety instructor, and Department Armorer Firearms instructor. He has received specialized training in advanced special weapons and tactics, tactical interactions, homicide investigations, and gang crime investigations.



**DETECTIVE
JOHN KALTENBACH**



**DETECTIVE
TERRY INMAN**

Detective Inman joined the department in 2001. He served in the United States Navy for eight years. He is a member of the I.L.E.A.S. Mobile Field Force team and the Attorney General's Internet Crimes Against Children Task Force. Detective Inman has received training in homicide investigation and computer crimes including peer to peer. Detective Inman is a department FOIA officer. He holds a Bachelor's Degree in Law Enforcement Administration and a Master of Science degree in Biosecurity-Disaster Preparedness.

DETECTIVE DIVISION



**SERGEANT
PHIL FRANKENBERRY**

Sgt. Frankenberry joined the department in 1998. He served four years in the United States Air Force as a combat engineer. He has received training in incident command, sex offender registration, and special weapons and tactics. Sgt. Frankenberry is a graduate of Northwestern University's School of Police Staff and Command. He is a truck enforcement officer.



Sgt. Jason Bergeron joined the department in 2000. He served in the United States Air Force for four years. He has received training in incident command, sex offender registration, special weapons and tactics, and supervision of police personnel. Sgt. Bergeron is an O.C. and firearms instructor, and a child safety seat technician. He holds an Associates Degree in Criminal Justice.

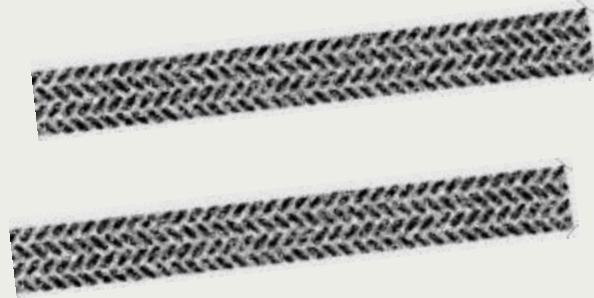


**SERGEANT
JASON BERGERON**



**SERGEANT
BILL HAAN**

Sergeant Haan joined the department in 2003. He has received training in incident command, sex offender registration, Supervision of police personnel, search and seizure, breath alcohol testing, death investigations, and special weapons and tactics. He is a certified juvenile officer.



Sergeant Smith joined the department in 2002. He has received training in sex offender registration, special weapons and tactics, supervision of police personnel and incident command. Sergeant Smith is a certified juvenile officer, and he is in charge of the department's fleet maintenance program.



**SERGEANT
CHET SMITH**



**OFFICER
AARON RODABAUGH**

Officer Rodabaugh joined the department in 2001. He served four years in the United States Marine Corps as a military police officer. He has an Associate's Degree in Criminal Justice. Officer Rodabaugh led the department in calls for service. He has received training in breath alcohol testing and incident command. He is a certified juvenile officer.



**OFFICER
MATT WITTENBERG**

Officer Wittenberg joined the department in 2004. He is a member of the Emergency Response Team, and is a less lethal shotgun instructor. He is a firearms instructor, and assists with fleet maintenance. From 2005 – 2008 he received the Alliance Against Intoxicated Motorists award for having the highest number of D.U.I. arrests. Officer Wittenberg holds an Associate's Degree in Criminal Justice.



**OFFICER
JAMES GILLIAM**

Officer James Gilliam joined the department in 2005. He has a Bachelor's Degree in Law Enforcement and Justice Administration. He has received training in special weapons and tactics, breath alcohol testing, gang investigations, F.T.O., and incident command. Officer Gilliam is a certified juvenile officer, Taser instructor, and a member of the Emergency Response Team.

10 YEAR ANNIVERSARY



PATROL DIVISION



**OFFICER
JAMES JAKYMIW**

Officer Jakymiw joined the department in 2007. He has a Bachelor's Degree in Law Enforcement and Justice Administration. He has received training in breath alcohol testing, patrol tactics, and incident command. and is a certified juvenile officer and bike officer.

**OFFICER
MATT GERARD**

Officer Gerard joined the department in 2007. He is a certified juvenile officer and is a member of the Emergency Response Team. He has received training in special weapons and tactics, tactical interactions, school violence, patrol tactics, and breath alcohol testing. Officer Gerard is also a Certified Concealed Carry Instructor for the State of Illinois.

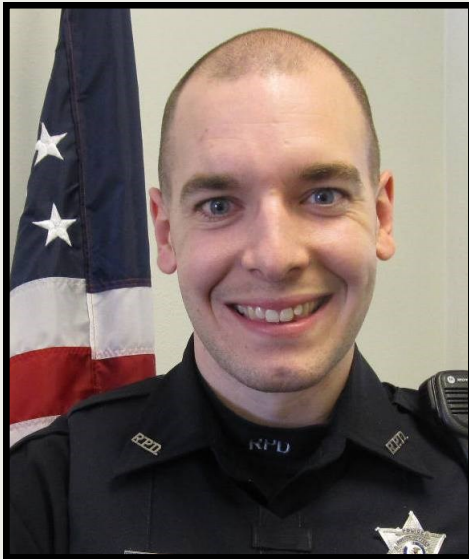


**OFFICER
JOSEPH SESTER**



Officer Sester joined the department in 2011. He is a bike officer and is assigned to the Patrol Division. He has training in patrol tactics, complete traffic stops and is a truck enforcement officer.





**OFFICER
RYAN BEERY**

Officer Beery joined the department in 2014 and has an Associate's Degree in Criminal Justice. Ryan is also a certified juvenile officer, and has received training in police Spanish, OC, Taser, and F.T.O.

**OFFICER
RYAN KOVACS**

Officer Kovacs joined the department in 2015. Ryan and has a Bachelor's Degree in Criminology from NIU. He has received training in search and seizure, control tactics, impact weapons, Taser, OC, PBT-BAO, enhanced patrol techniques, FEMA first responder, field sobriety testing, police Spanish and completed 200 hours through the State of Illinois Correctional Officer Academy.





**OFFICER
EMILY HARDESTY**



Officer Hardesty joined the department in 2006. She has an Associate's Degree in Criminal Justice. She has received training in Incident command, emergency vehicle operations, patrol tactics, breath alcohol testing, and Police Canine Training. She is assigned to the patrol division. Officer Hardesty is on the ILEAS Mobile Field Force Team and is a K-9 Officer.



5 YEAR ANNIVERSARY

K-9 DON

K-9 Don began his career with the department in February 2010.



**OFFICER
ELVIS BANESKI**

Officer Baneski joined the department in 2008. He has a Bachelor's Degree in Management. He has received training in patrol tactics, street crimes, complete traffic stops, rapid deployment, and breath alcohol testing and is a bike officer. Officer Baneski led the department in Criminal, DUI and Drug arrests for the year. He has received Police Canine Training and is a K-9 Officer.



K-9 Edy began his career with the department in February 2014.



K-9 DON

- 54—Open air sniffs
- 13 Positive Alerts — Drugs or drug paraphernalia were located inside of the vehicle.
- 1—Evidence recovery/article search recovery.
- 6—School searches
- 10—Demonstrations
- 5—Tracks



K-9 EDY

- 135—Open air sniffs
- 22 Positive Alerts – Drugs or drug paraphernalia were located inside of the vehicle.
- 6– School search
- 3—Live tracks of suspects—2 apprehensions.

Thank you for your many years of service and best wishes in your future endeavors!!



**OFFICER
DAVE CHRISTOPHERSON**

Officer Christopherson joined the department in 1987. He served in the United States Army Reserves for six years as a military police officer. He received training in drugged/drunk driver detection, breath alcohol testing, crime scene investigation, and traffic crash investigations. Officer Christopherson was a certified juvenile officer and a hunter safety instructor.



**DISPATCHER
JULIE THRUMAN**

Dispatcher Thruman joined the department in 1987. She was a certified LAC LEADS Operator and certified in EMD, public safety dispatch, 911 dispatch, active shooter, 911 liability, and suicide intervention. She received specialized training in incident command, CPR, AED, On-Star, fire dispatch, domestic violence, TTY, and non-emergency call handling.



RETIREMENT



COMMUNICATIONS SUPERVISOR SANDY SULLIVAN

C.S. Sullivan joined the department in 1996 and is in charge of the department's communications division. She has served on the Ogle County ETSB 911 Board since 2002. She is a certified LAC LEADS operator and is also certified in the areas of legal issues, training officer, EMD, incident command, hostage negotiations, advanced law enforcement dispatch, 911 liability, fire dispatch, CPR, AED, and On-star. C.S. Sullivan maintains scheduling for both dispatchers and crossing guards, and is a FOIA Officer.



DISPATCHER TONY MILBURN

Dispatcher Milburn joined the department in 2000, and is a training officer and special needs/ child safety seat technician. He is certified in 911 dispatch, 911 liability and LEADS. He has received training in hostage negotiations, incident command, police & fire dispatch, On-Star, EMD, CPR & AED instructor.



DISPATCHER LUISA NAMBO

Dispatcher Nambo joined the department in 2003. She is a bilingual dispatcher, a training officer and child safety seat technician. She is certified in LEADS, EMD and 911 dispatch. She has additional training in incident command, domestic violence, 911 liability, active shooter, suicide intervention, CPR, AED, On-Star and Homeland Security.



COMMUNICATIONS DIVISION



**DISPATCHER
CORY BECK**

Dispatcher Beck joined the department in 2004. She is a training officer and a certified LAC LEADS operator. 911 dispatch, LEADS, incident command, active shooter, stress identification, 911-liability and domestic violence. She has additional training in CPR, AED, On-Star, fire dispatch, advanced law enforcement dispatch, EMD and TTY.

**DISPATCHER
ROBIN OLSZEWSKI**

Dispatcher Olszewski joined the department in 2007. He is certified in LEADS, advanced law enforcement dispatch, advanced fire dispatch, EMD, 911 dispatch, hostage negotiations, active shooter, domestic violence and suicide intervention. He has received specialized training in CPR, AED, On-Star and TTY.



**DISPATCHER
CASSIE ROGERS**



Dispatcher Rogers joined the department in 2013. She is certified in 911 dispatch, LEADS, incident command, EMD, law enforcement dispatch, fire service dispatch, and has received severe weather spotter training.



**DISPATCHER
TREVOR OWEN**

Dispatcher Owen joined the department in 2015. He is assigned to the 9-1-1 dispatch center and certified in LEADS, advanced law enforcement dispatch, advanced fire dispatch, EMD, 911 dispatch, CPR, AED, On-Star and TTY along with Ogle County siren operations.

**DISPATCHER
SENADA AJVAZI**

Dispatcher Ajvazi joined the department in 2015. She is a part-time dispatcher assigned to the 9-1-1 dispatch center. Senada is certified in LEADS, advanced law enforcement dispatch, advanced fire dispatch, EMD, 911 dispatch, CPR, AED, On-Star and TTY along with Ogle County siren operations.



**DISPATCHER
ALISON PATRICK**

Dispatcher Patrick joined the department in 2015. She is a part-time dispatcher assigned to the 9-1-1 dispatch center. Alison is certified in LEADS, advanced law enforcement dispatch, advanced fire dispatch, EMD, 911 dispatch, CPR, AED, On-Star and TTY along with Ogle County siren operations.



EVIDENCE EVIDENCE EVIDENCE EVIDENCE EVIDENCE EVIDENCE EVIDENCE EVIDENCE EVIDENCE EVIDENCE

**New
Beginnings!**

**DISPATCHER
BRITTANY SPANDET**

Dispatcher Spandet took a dispatcher position with the Ogle County Sheriff's Department in early 2015. Thank you for your service and we wish you the best in your future endeavors Brittany!



COMMUNICATIONS DIVISION

CHRIS WATSON

Ms. Watson has been with the department since 2002. She works at the intersection of Lincoln Avenue and North 9th Street.

BOB ECKHARDT

Mr. Eckhardt has been with the department since 2009. He works at the intersection of 9th Street and 10th Avenue.



JAMES BIRCHALL

Mr. Birchall has been with the department since 2011. He works at the intersection of 9th Street and 4th Avenue.

JOAN BIRCHALL

Mrs. Birchall has been with the department since 2011. She works at the intersection of 8th Street and 5th Avenue.

KATHRYN McGRATH

Ms. McGrath has been with the department since 2014. She works at the intersection of 8th Street and 4th Avenue.

JOHN GENHARDT

Mr. Genhardt has been with the department since 2013. He works at the intersection of 10th Avenue and Lincoln Highway.

KAREN LEE

Ms. Lee has been with the department since 2013. She works at the intersection of 2nd Street and School Avenue.

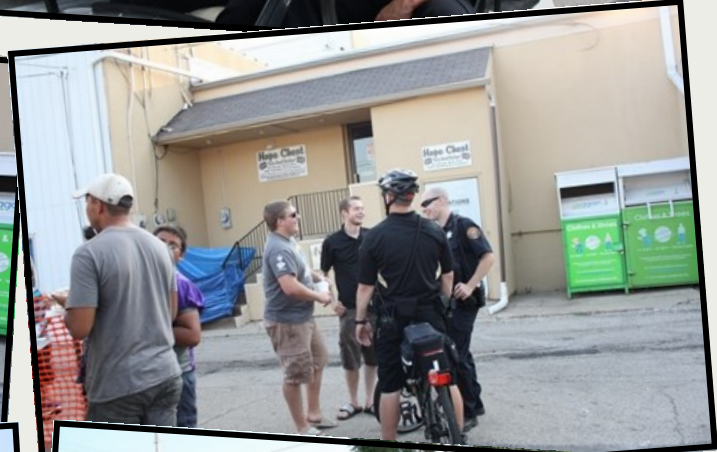
SUSAN MORRIS

Ms. Morris has been with the department since 2014. She is currently a substitute.

ANGELA MITCHELLE

Ms. Mitchelle has been with the department since 2014. She is currently a substitute.

LINCOLN HIGHWAY HERITAGE FESTIVAL



Officers patrolling the festival ensure the weekend runs smoothly for festival goers and vendors. Thank you for all you do!!

COMMUNITY INVOLVEMENT

- **Tobacco Compliance** checks (3 times a year—fall, winter and spring).
- Members of the department attended numerous **school safety meetings/ intruder drills** throughout the year.
- The department hosted 3 blood drives this year collecting 113 whole blood units and 12 double red cell units of blood. The number of lives saved through this initiative were 350. The **Halloween Vein Drain** event in October continues to be extremely popular with the community. Rock River Valley Blood Bank coordinator Jaclyn Kepka looks forward to donning her spooky attire each year, and comes baring Halloween themed treats and door prizes!



- Bike Officers were on hand during the annual **2K Fun Run** event.

- The department participated in the **Drug Enforcement Agency National Take Back Initiative** (DEA-NTBI) again this year. Each year collection dates and sites are established where residents are encouraged to drop off their expired, unwanted, unneeded pharmaceuticals preventing these items from falling into the wrong hands. The department recently purchased a locked drop box which is located in the lobby 24/7 for citizens to utilize at their convenience.
- Department members performed **security details** throughout the year for school functions (dances, games, graduations), parades, Lincoln High Heritage Festival, etc.

COMMUNITY INVOLVEMENT

- Officers conducted **school meetings** on various topics (e.g., Halloween Safety, Juvenile Justice, etc.)
- Each year the Rochelle Police Department, in cooperation with the Department of Natural Resources, hosts a **Hunter Education Course**. The purpose of the course is to promote responsible hunter conduct, discuss the importance of wildlife management laws and regulations, and to encourage the safe handling of firearms and ammunition.

DISPATCHERS HONORED FOR PROFESSIONALISM DURING STORM

Rochelle News Leader, Thursday, May14, 2015

THURSDAY night the Ogle County 911 Board honored six dispatchers who were working during the storm that hit Ogle County on April 9th. In a unique set of circumstances, both the Rochelle and Ogle County dispatchers were working together in Rochelle. The storm coincided with the Ogle County Sheriff's Department move into the new facility in Oregon. Ogle County dispatchers were housed with Rochelle during the move.



Rochelle Communications Supervisor Sandy Sullivan applauded the dispatchers,

“They did a great job and we were lucky to have this great group. They pulled together and worked as a team.” Sullivan said, “For two different agencies to come together in a small space, they did an excellent job.”

911 Coordinator Sandy Beitel agreed. “I listened to hours worth of calls that came into the center and I’m amazed at what these people did,” Beitel said. She explained the hundreds of calls varied from media assistance, calls asking what the sirens were for, calls asking what to do and where to go to people calling to inquire about the sirens or the location of the tornado.

“The dispatchers kept their calm and their professionalism and went above and beyond anything I could imagine. They handled things expeditiously and treated the public properly. After each call they thanked them for calling,” Beitel said.

“You guys really made a perfect storm work out. Thank you for your service and dedication to the citizens of Ogle County.”

COMMUNITY INVOLVEMENT

- Staff at **Wills Chiropractic** sponsored a “**Fun Day**” offering free screenings for the whole family. Supervisor Sandy Sullivan hosted a booth, along with several area businesses in support of this worth while event.



- The Rochelle Police Department participated in the **Special Olympics Torch Run** on June 11th. The department has taken part in this event for many years, which helps to raise funds for Special Olympics.

- **Board Membership:** Ogle County 911 Board, HOPE Board, and Shining Star Board.
- **K-9 Fundraiser** held at T-Byrd Lanes. Funds raised go towards all equipment, training and supplies for the K-9 Program. This fundraiser is a local favorite packed with tremendous community support.
- **Champions for Children Walk** was held on May 30th. Department personnel participated in this event which is held to generate awareness of sexual and physical child abuse. The walk is organized by the Shining Star Children’s Advocacy Center in Dixon.



COMMUNITY INVOLVEMENT

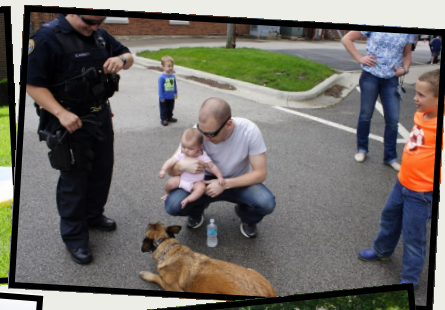
Sergeant Chester Smith and Custodian Wayne Pelletier renovated the **garage storage area** which had become cluttered and disorganized over the years. After photos display a tidy area complete with shelving, cabinets and a fresh coat of paint.



The Rochelle Illinois Police Department celebrated **Police Week** with it's first Community Open House on Saturday, May 16, 2015. National Police Week, which was established by a joint resolution of Congress in 1962, recognizes the service and sacrifice of U.S. law enforcement.

The community and surrounding area were invited to attend this event which featured:

- Demonstrations of law enforcement techniques
- Police vehicles and emergency equipment on display
- Tours of the facility including the dispatch center and jail cells
- Gun Safety demonstration
- Taser demonstration with officer/dispatcher/public volunteer tasings
- K-9 demonstration
- Bike Rodeo obstacle course and lessons in bike safety from our Bike Patrol



DEPARTMENT ACTIVITIES

ROCHELLE POLICE DEPARTMENT YEAR END STATISTICS

INCIDENT	2015	2014	2013	2012
TOTAL CALLS FOR SERVICE	17264	20016	22371	15515
TOTAL 911 CALLS	2708	2086	2096	2415
*INCOMING/OUTGOING CALLS	42983	37360	39292	40711
TRAFFIC STOPS	1937	1844	3342	3809
TRAFFIC TICKETS ISSUED	795	846	1244	1373
WRITTEN WARNINGS ISSUED	1662	1305	2445	3233
DUI ARRESTS	22	38	55	55
ACCIDENTS	421	437	374	333
ACCIDENTS WITH INJURIES	10	28	32	12
ACCIDENTS WITH FATALITIES	2	0	1	1
CRIMINAL DAMAGE TO PROPERTY	27	34	50	71
CRIMINAL DAMAGE TO VEHICLE	31	50	42	54
CRIMINAL TRESPASS TO LAND	16	24	14	17
BURGLARY TO BUSINESS	6	5	7	8
BURGLARY TO RESIDENCE	25	20	23	29
BURGLARY TO VEHICLE	69	25	17	72
BURGLARY OTHER	1	2	2	1
ATTEMPTED BURGLARY	2	6	14	3
THEFT AUTO	8	5	9	4
ARMED ROBBERY	1	0	0	0
THEFT OVER \$500	19	21	21	28
THEFT UNDER \$500	83	102	95	123
DOMESTICS	162	132	129	131
DOMESTIC BATTERY	47	37	47	38
AGGRAVATED BATTERY	1	0	2	6
BATTERY	33	64	23	49
DISORDERLY CONDUCT	12	5	5	8
WARRANTS SERVED	235	174	198	243
WARRANTS OBTAINED	27	39	30	32
CRIMINAL ARRESTS	268	321	310	434
HOMICIDES	0	1	0	0
MALE PRISONERS	217	246	246	350
FEMALE PRISONERS	62	87	63	109
ANIMAL CALLS	251	277	222	256
ALARMS	209	201	217	205
CRIMINAL SEXUAL ASSAULT/ABUSE	10	10	9	10
SHOOTING	1	3	0	1
ABANDONED VEHICLES	52	56	59	55
PARKING TICKETS	25	58	46	56
CHILD PORNOGRAPHY	0	0	3	1
ARSON	0	1	0	1

ROCHELLE POLICE DEPARTMENT 2015 STATISTICAL TRENDS

TYPE OF ACTIVITY	2015	2014	NUMERICAL DIFFERENCE	PERCENTAGE OF CHANGE
TOTAL CALLS FOR SERVICE	17264	20016	-2752	-13.7%
TOTAL 911 CALLS	2708	2086	622	29.8%
*INCOMING/OUTGOING CALLS	42983	37360	5623	15.1%
TRAFFIC STOPS	1937	1844	93	5.0%
TRAFFIC TICKETS ISSUED	795	846	-51	-6.0%
WRITTEN WARNINGS ISSUED	1662	1305	357	27.4%
DUI ARRESTS	22	38	-16	-42.1%
ACCIDENTS	421	437	-16	-3.7%
ACCIDENTS WITH INJURIES	10	28	-18	-64.3%
ACCIDENTS WITH FATALITIES	2	0	2	200.0%
CRIMINAL DAMAGE TO PROPERTY	27	34	-7	-20.6%
CRIMINAL DAMAGE TO VEHICLE	31	50	-19	-38.0%
CRIMINAL TRESPASS TO LAND	16	24	-8	-33.3%
BURGLARY TO BUSINESS	6	5	1	20.0%
BURGLARY TO RESIDENCE	25	20	5	25.0%
BURGLARY TO VEHICLE	69	25	44	176.0%
BURGLARY OTHER	1	2	-1	-50.0%
ATTEMPTED BURGLARY	2	6	-4	-66.7%
STOLEN VEHICLES	8	5	3	60.0%
ARMED ROBBERY	1	0	1	100.0%
THEFT OVER \$500	19	21	-2	-9.5%
THEFT UNDER \$500	83	102	-19	-18.6%
DOMESTICS	162	132	30	22.7%
DOMESTIC BATTERY	47	37	10	27.0%
AGGRAVATED BATTERY	1	0	1	100.0%
BATTERY	33	64	-31	-48.4%
DISORDERLY CONDUCT	12	5	7	140.0%
WARRANTS SERVED	235	174	61	35.1%
WARRANTS OBTAINED	27	39	-12	-30.8%
CRIMINAL ARRESTS	268	321	-53	-16.5%
HOMICIDES	0	1	-1	-100.0%
MALE PRISONERS	217	246	-29	-11.8%
FEMALE PRISONERS	62	87	-25	-28.7%
ANIMAL CALLS	251	277	-26	-9.4%
ALARMS	209	201	8	4.0%
CRIMINAL SEXUAL ASSAULT/ABUSE	10	10	0	0.0%
SHOOTING	1	3	-2	-66.7%
ABANDONED VEHICLES	52	56	-4	-7.1%
PARKING TICKETS	25	58	-33	-56.9%
CHILD PORNOGRAPHY	0	0	0	0.0%
ARSON	0	1	-1	-100.0%

**ROCHELLE POLICE DEPARTMENT
INDIVIDUAL ACTIVITY TOTAL CALLS 17264 FOR 2015**

OFFICER	#	TOTAL CFS	CRIMINAL ARRESTS	WARRANT ARRESTS	TRAFFIC ARRESTS	WRITTEN WARNINGS	PARKING TICKETS	ORDINANCE VIOLATION
WITTENBERG	8	982	3	4	31	45	5	
JAKYMIW	9	826	29	10	40	56	3	3
INMAN	10	56	6			1		1
BANESKI	11	1402	74	44	232	316		2
GERARD	13	1043	16	14	35	26	4	1
ALBERS	15	259	2		4	7		
RODABAUGH	16	1653	7	4	5	9		
KALTENBACH	17	423	21	28	21	28	1	
CHRISTOPHERSON	18	300			2	4		
GILLIAM	20	442	11	5	8	18	5	
HARDESTY	21	938	20	16	36	129		1
SESTER	30	711	11	6	46	116	1	2
BEERY	37	1206	22	23	161	325		
KOVACS	38	1226	15	21	59	332	2	
SMITH	22	481	4			37		4
BERGERON	23	416	16	7	9	23	1	
FRANKENBERRY	24	536	10	3	96	143	2	
LEININGER	25	60	1			1		
HAAN	26	463			10	46	1	
HIGBY	27	14						
TOTAL		13437	268	185	795	1662	25	14

**ROCHELLE POLICE DEPARTMENT
SELECTED OFFICER ACTIVITY
2015**

OFFICER	#	DUI	ILLEGAL POSS/CONS	MINOR POSS/CONS	DRUG	SUSP/ REVOKED	INSURANCE	SEAT BELT	SPEEDING	STOP ARM
WITTENBERG	8				2	1	1		33	
JAKYMIW	9				2	1	4		6	
INMAN	10									
BANESKI	11	8	3	2	33	13	57	10	184	3
GERARD	13	3	2		2	2	5		1	
ALBERS	15								1	
RODABAUGH	16					1	1			
KALTENBACH	17					4	1		7	
CHRISTOPHERSON	18									
GILLIAM	20	2			2					
HARDESTY	21				14	6	4	1	16	
SESTER	30	3				2	9		51	
BEERY	37	2	3		6	3	26	5	141	
KOVACS	38	2	1		1	2	39		10	
SMITH	22			1					10	
BERGERON	23					1			12	1
FRANKENBERRY	24	2	2		6	7	10	1	31	
LEININGER	25									
HAAN	26						1	1	9	
HIGBY	27									
TOTALS		22	11	3	68	43	158	18	512	4

**ROCHELLE POLICE DEPARTMENT
OFFICER TIME USE
2015**

OFFICER	OFFICER #	VAC HRS	SICK HRS	TRAIN HRS	COURT HRS	O.T./Holiday HRS
WITTENBERG	8	126.0	40.0	142.9	6.1	159.0
JAKYMIW	9	50.0	66.5	3.7	9.3	179.5
INMAN	10	209.0	16.0	30.7	4.8	71.5
BANESKI	11	130.0	30.0	5.6	40.0	348.5
GERARD	13	150.0	53.5	77.5	4.7	224.0
ALBERS	15	181.0	20.0	11.5	5.2	32.0
RODABAUGH	16	200.0		4.0	2.8	148.5
KALTENBACH	17	233.0		16.5	8.6	73.0
CHRISTOPHERSON	18			1.6	3.6	106.0
GILLIAM	20	150.0		5.2	3.4	171.5
HARDESTY	21	168.0	60.0	13.2	10.8	178.5
SESTER	30	90.0	10.0	45.5	6.5	157.0
BEERY	37			5.2	4.2	102.0
KOVACS	38			21.4	8.2	50.0
SMITH	22	142.0		43.8	1.3	217.5
BERGERON	23	188.0	63.0	13.7	1.9	191.5
FRANKENBERRY	24	234.0	87.0	34.0	13.0	113.5
LEININGER	25	225.0	16.0	16.9	16.4	38.0
HAAN	26	266.0	46.0	6.6	2.3	200.0
HIGBY	27	260.0	84.0	5.3	2.8	
TOTAL		3002.0	592.0	504.6	155.5	2761.5

**ROCHELLE POLICE DEPARTMENT
DISPATCH TIME USE
2015**

DISPATCHER	#	VAC HRS	SICK HRS	TRAIN HRS	COURT HRS	O.T. HRS/ Holiday HRS	CALLS DISPATCHED	CALLS HANDLED
OLSZEWSKI	1	142.0	12.0			143.5	2734	301
NAMBO	2	137.5	24.0			174.5	2255	674
THRUMAN	3					7.0	915	313
BECK	4	84.0	10.0			113.0	2486	188
MILBURN	5	161.0	8.0	18.1		369.5	2686	840
SULLIVAN	7	195.5				70.0	467	235
ROGERS	35		15.8			29.0	2521	669
SPANDET	36					8.5	488	105
OWEN	39					65.5	1567	317
AJVAZI	40						692	93
PATRICK	41						453	92
TOTAL		720.0	69.8	18.1	0.0	980.5	17264	3827

**ROCHELLE POLICE DEPARTMENT
RECEIPTS FOR YEAR 2015**

MONTH	CIRCUIT CLERK FINES	REPORT COPIES	PARKING TICKETS	DUI FINES	DRUG FINES	VEHICLE FUND	ALARM FEES	TOW FEES
JANUARY	\$ 5,867.44	\$ 70.00	\$ 60.00	\$ 377.00	\$ 44.61	\$ 239.00		\$ 2,475.00
FEBRUARY	\$ 6,640.61	\$ 60.00	\$ 25.00	\$ 255.00	\$ 70.00	\$ 290.00		\$ 4,575.00
MARCH	\$ 7,774.10	\$ 40.00	\$ 275.00	\$ 515.00	\$ 283.00	\$ 255.00		\$ 5,720.00
APRIL	\$ 7,584.34	\$ 105.00	\$ 10.00	\$ 514.00	\$ 53.50	\$ 370.00		\$ 3,850.00
MAY	\$ 7,539.17	\$ 50.00	\$ 25.00	\$ 223.40	\$ 50.50	\$ 302.00		\$ 3,100.00
JUNE	\$ 6,616.34	\$ 145.00	\$ 100.00	\$ 373.30	\$ 55.00	\$ 271.00	\$ 1,700.00	\$ 4,500.00
JULY	\$ 7,143.11	\$ 10.00	\$ 10.00	\$ 715.61	\$ 51.50	\$ 300.00		\$ 6,550.00
AUGUST	\$ 10,150.49	\$ 40.00	\$ 50.00	\$ 791.85	\$ 292.50	\$ 348.00	\$ 25.00	\$ 3,500.00
SEPTEMBER	\$ 9,049.14	\$ 100.00	\$ 110.00	\$ 670.00	\$ 20.50	\$ 237.50		\$ 5,565.00
OCTOBER	\$ 9,696.00	\$ 60.00	\$ 20.00	\$ 360.00	\$ 39.61	\$ 402.50	\$ 75.00	\$ 3,050.00
NOVEMBER	\$ 7,859.54	\$ 60.00		\$ 742.00	\$ 3,818.46	\$ 120.00	\$ 50.00	\$ 3,165.00
DECEMBER	\$ 7,016.22	\$ 140.00	\$ 60.00	\$ 706.00	\$ 35.00	\$ 121.00	\$ 200.00	
TOTALS	\$ 92,936.50	\$ 880.00	\$ 745.00	\$ 6,243.16	\$ 4,814.18	\$ 3,256.00	\$ 2,050.00	\$ 46,050.00

ROCHELLE POLICE DEPARTMENT ADDITIONAL REVENUE

2015 OVERWEIGHT TRUCKS

The Rochelle Police Department implemented a truck enforcement program in 2011 designed to reduce the number of overweight trucks on our bridges and roadways. This program has evolved into a comprehensive truck safety enforcement program which benefits not only the motoring public, but truck drivers as well.

Saving lives by keeping our bridges safe from collapse is the primary goal of the Truck Weight Limit Enforcement Program. Prolonging the life expectancy of our bridges and roads also saves taxpayers money by reducing the number of annual bridge and road repairs in an age when construction dollars are limited.

- 5 Citations
- Truck Fine Totals : **\$35,000**

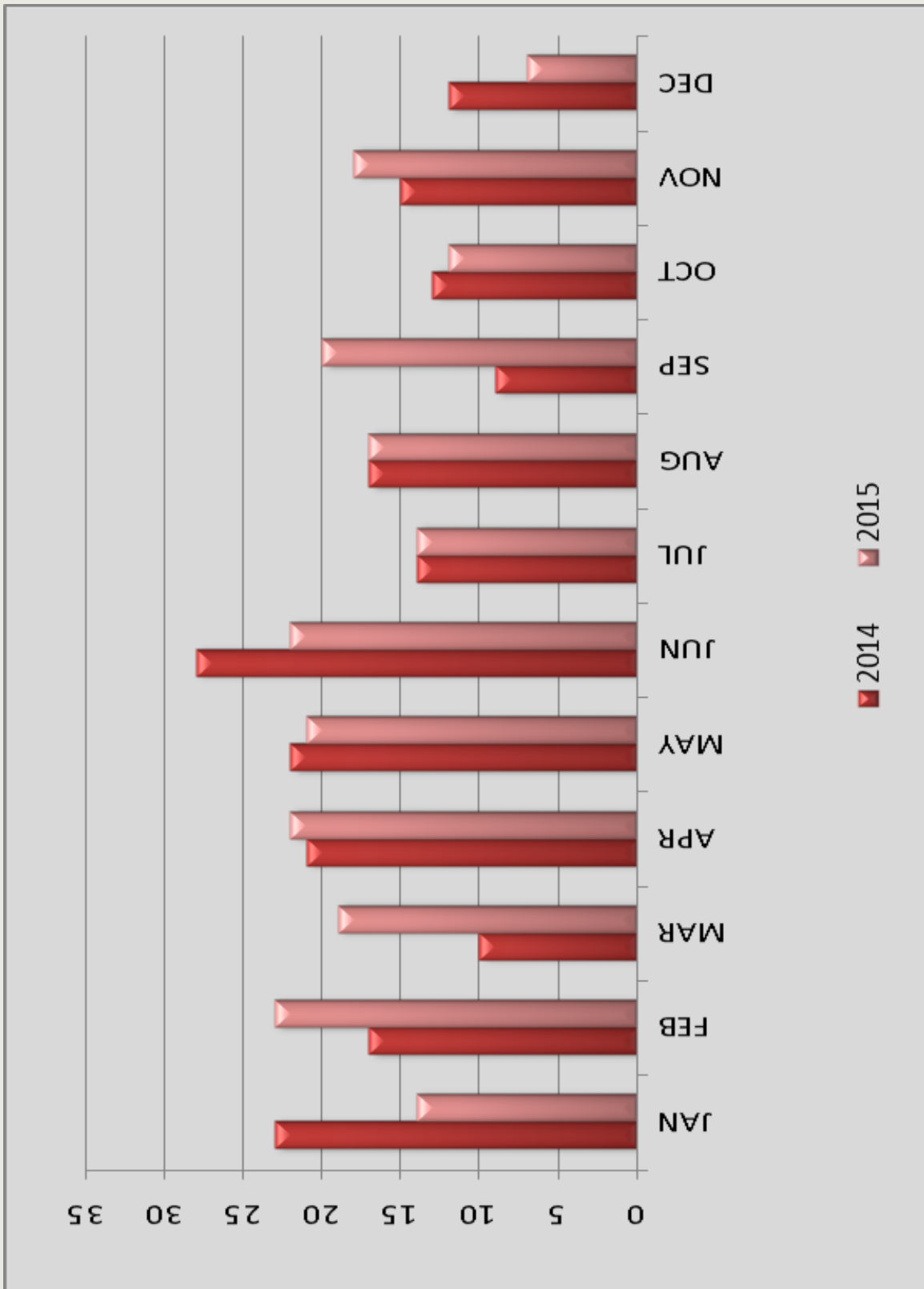
2015 ADMINISTRATIVE TOW

In 2012, the department, in conjunction with the City of Rochelle, enacted an ordinance that authorizes the imposition of an administrative fee when a vehicle has to be towed and impounded due to the arrest or detention of the owner or driver for violation of a particular law or ordinance.

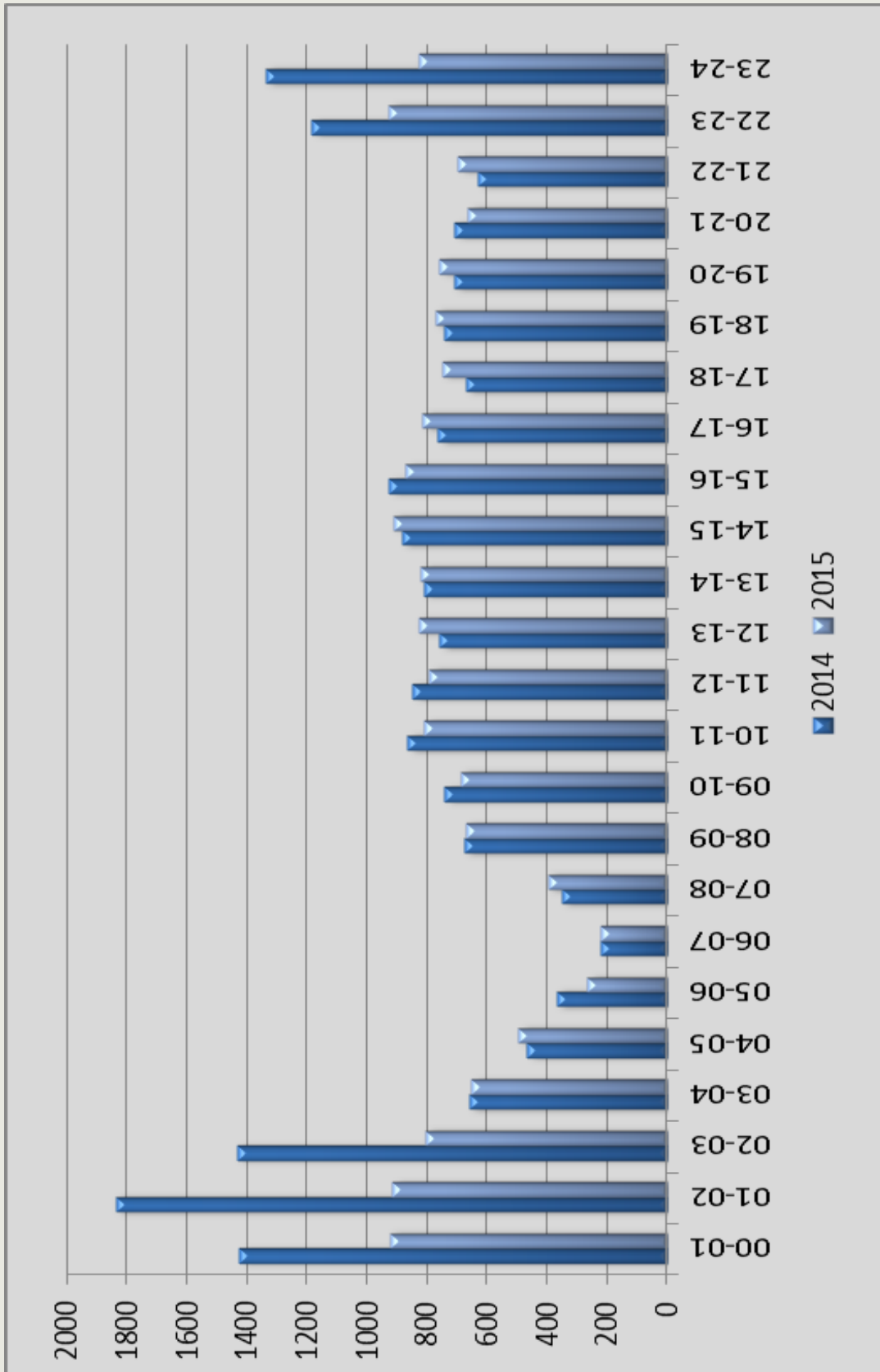
Cases are assigned a hearing date and are reviewed monthly by a City appointed attorney. Hearings are scheduled for the first Monday of the month and are held in the City of Rochelle council chambers. Involved parties are encouraged to utilize this venue to present evidence and or arguments disputing the charges they feel have been presented in error.

2015 Administrative Fee Totals: **\$46,050**

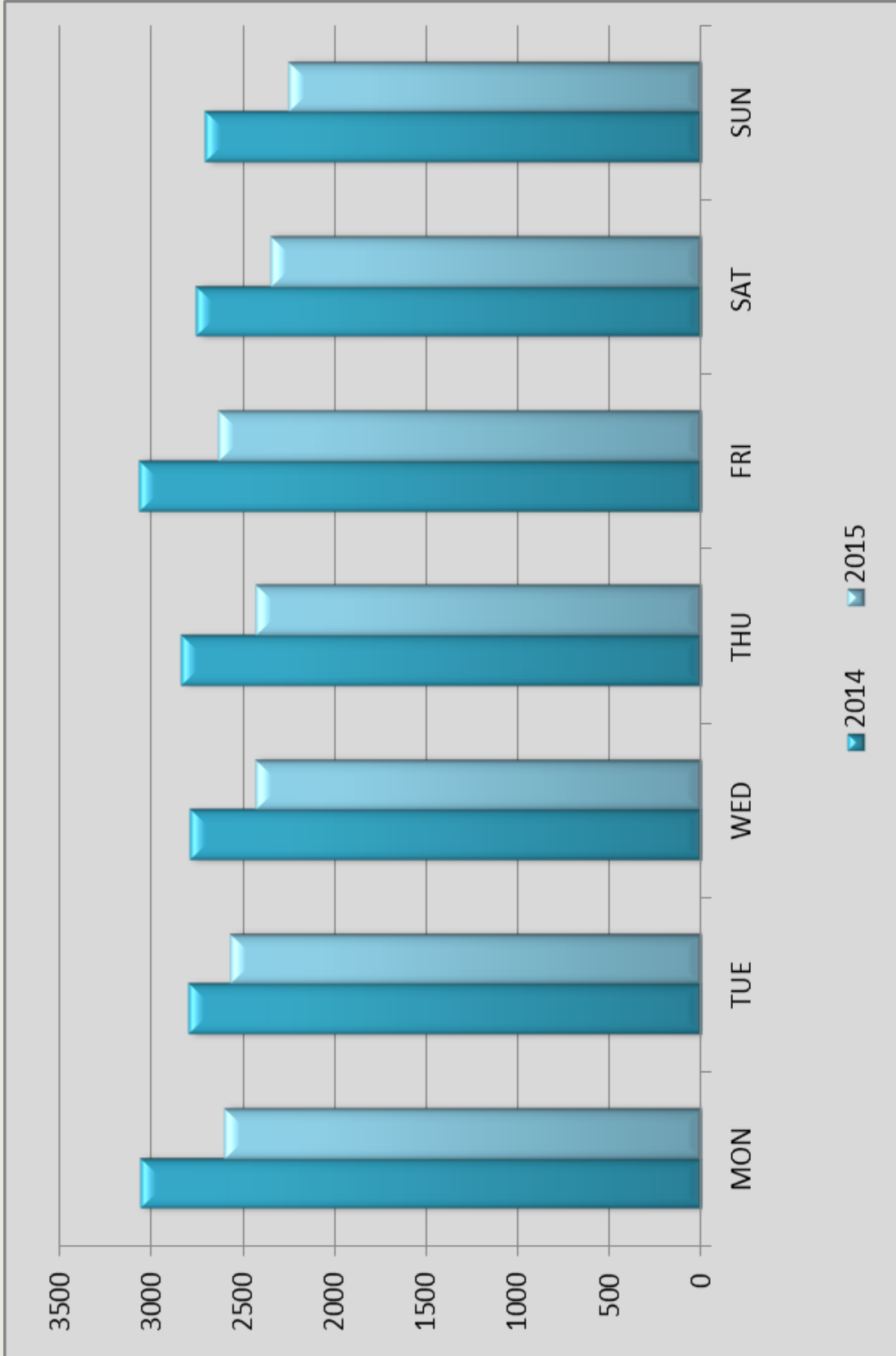
ROCHELLE POLICE DEPARTMENT ALARMS RECEIVED



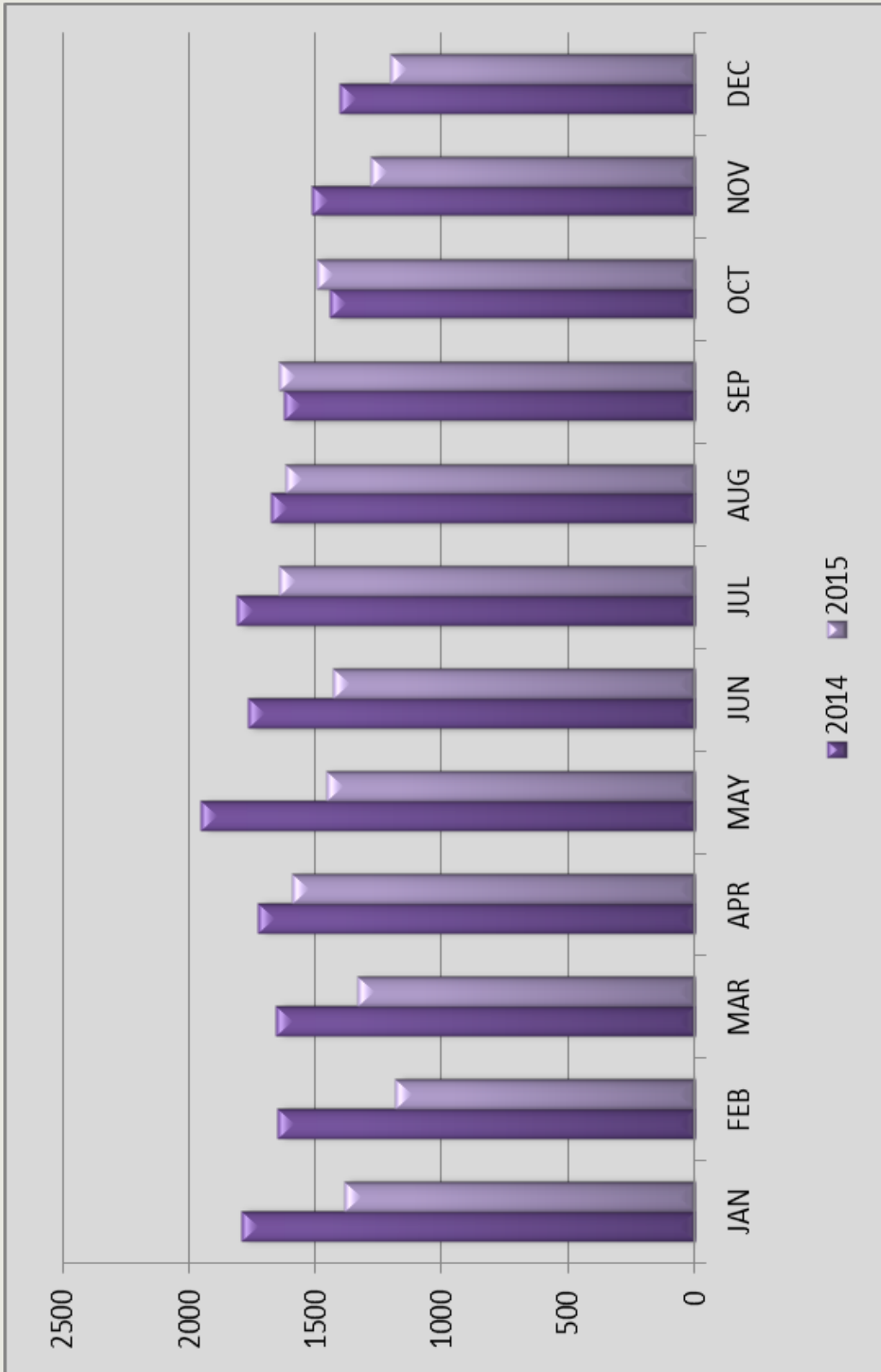
ROCHELLE POLICE DEPARTMENT CALLS FOR SERVICE BY HOUR OF DAY



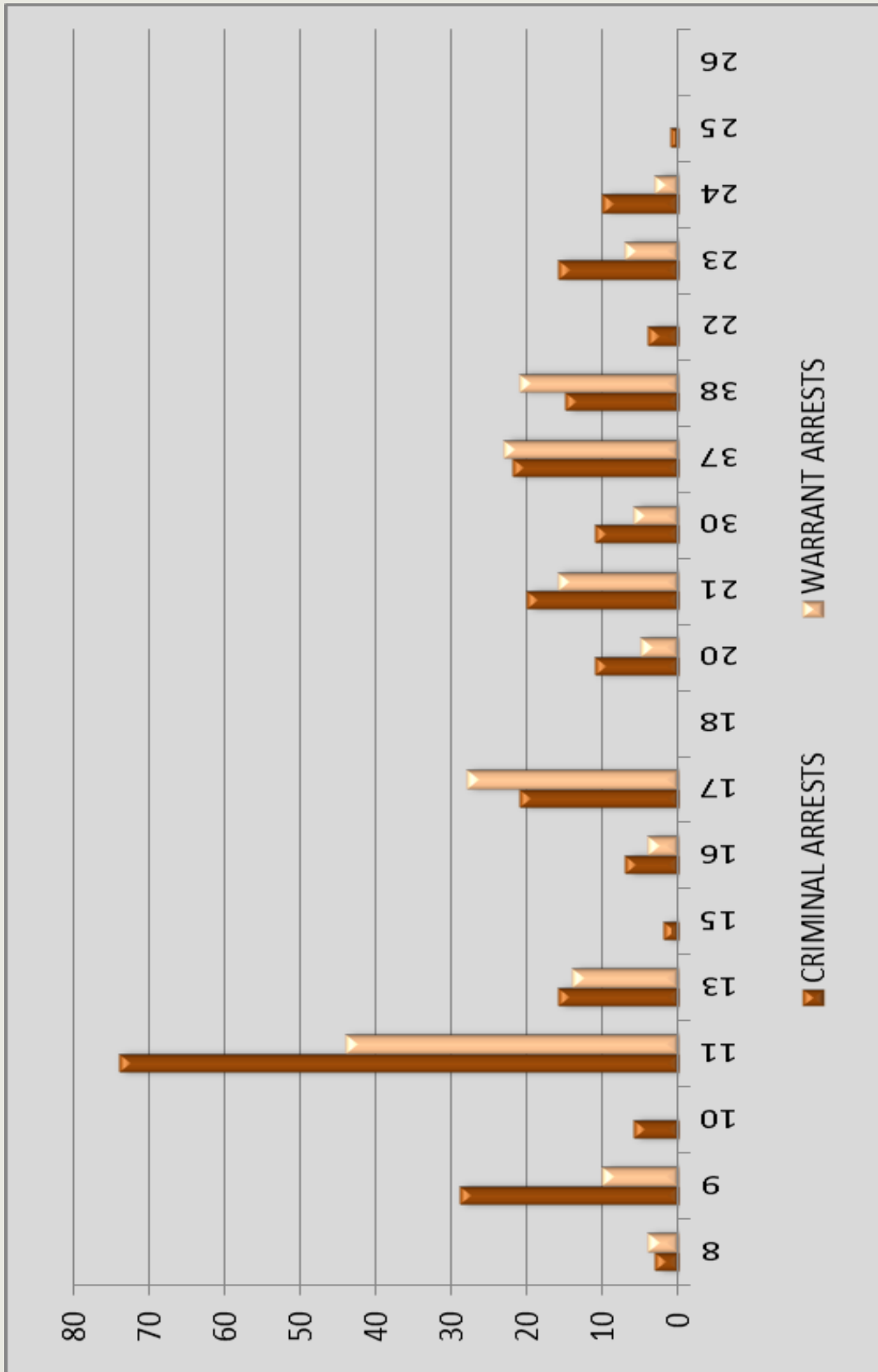
ROCHELLE POLICE DEPARTMENT CALLS FOR SERVICE BY DAY OF WEEK



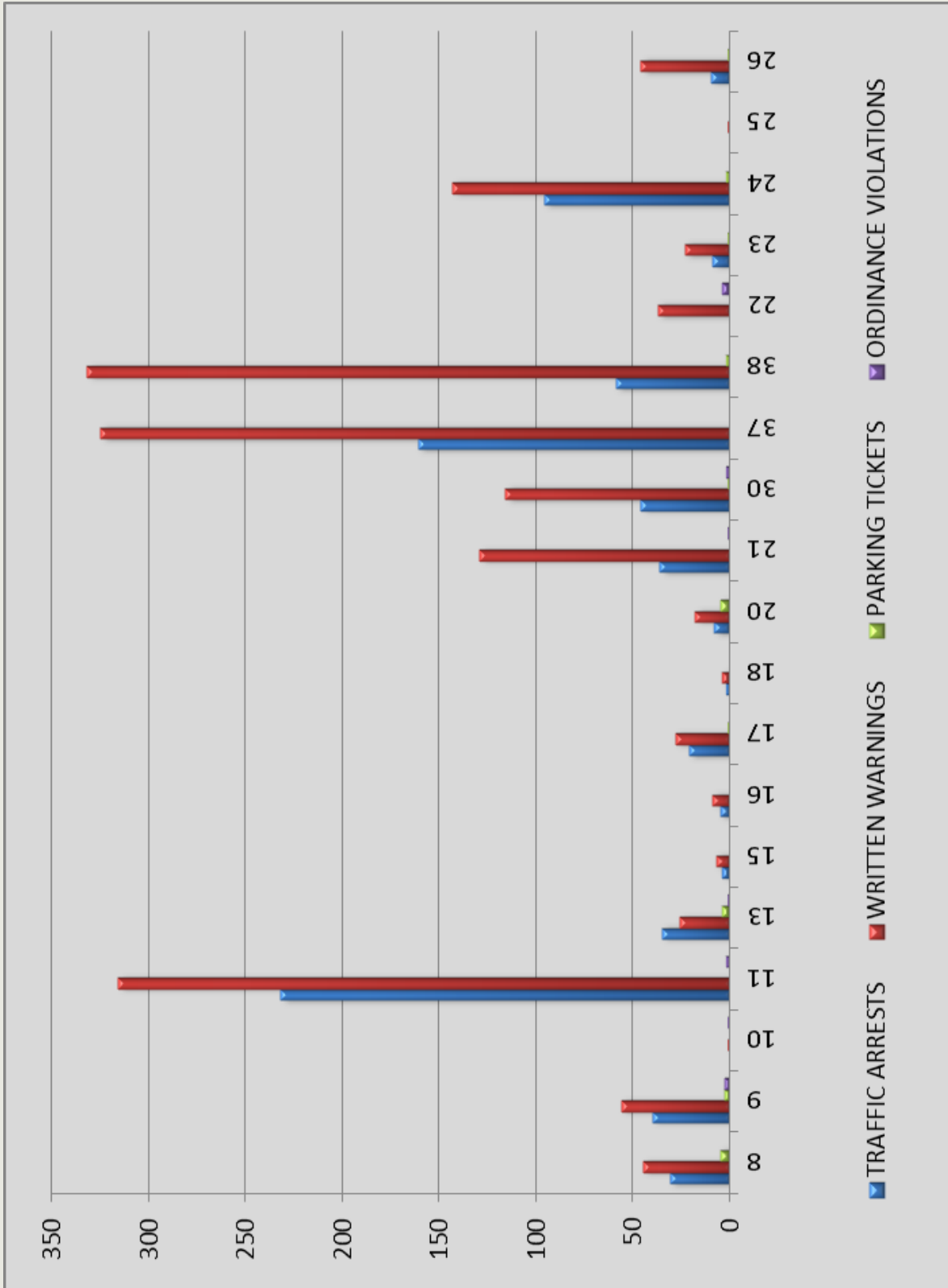
ROCHELLE POLICE DEPARTMENT CALLS FOR SERVICE BY MONTH



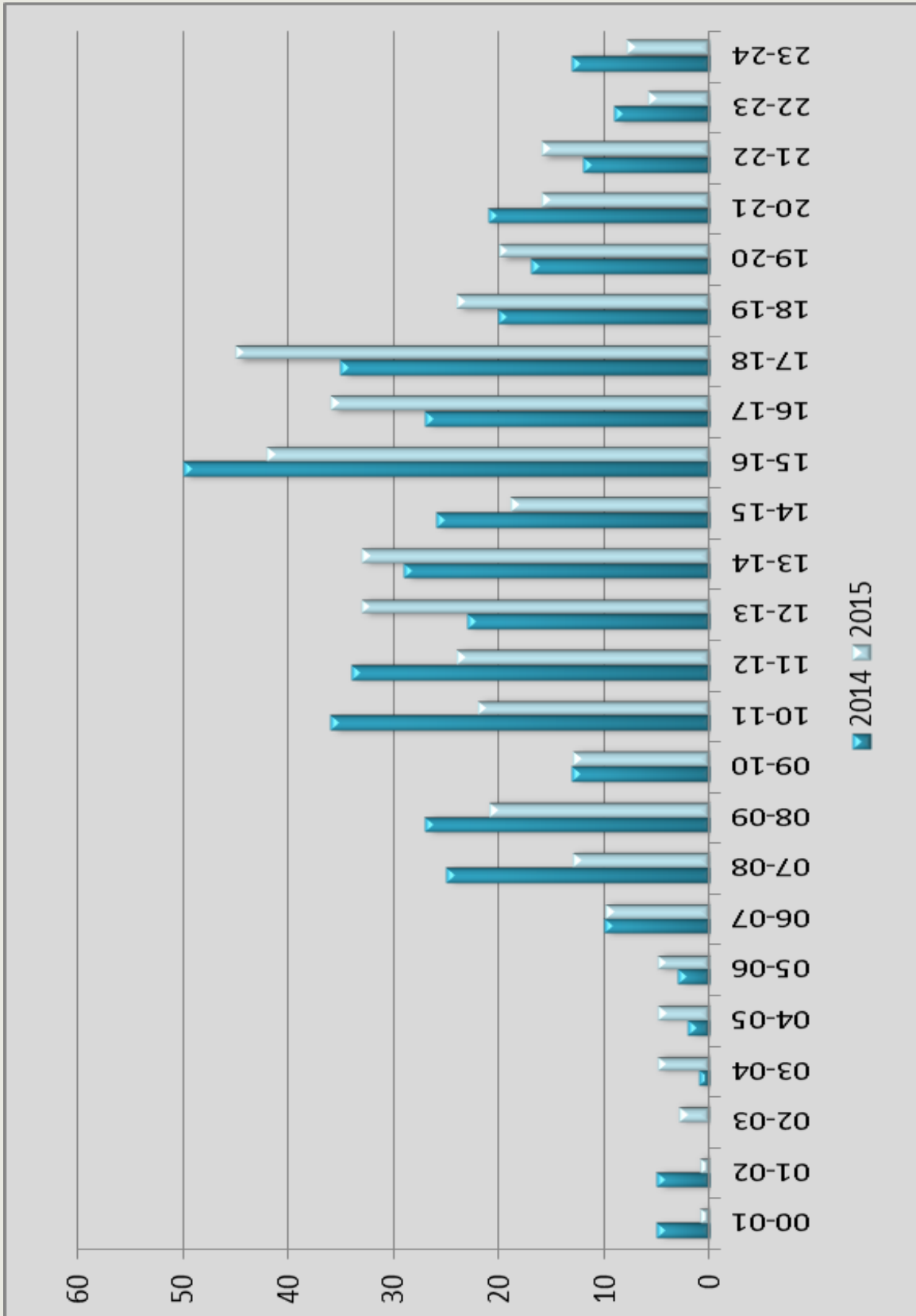
ROCHELLE POLICE DEPARTMENT CRIMINAL ACTIVITY 2015



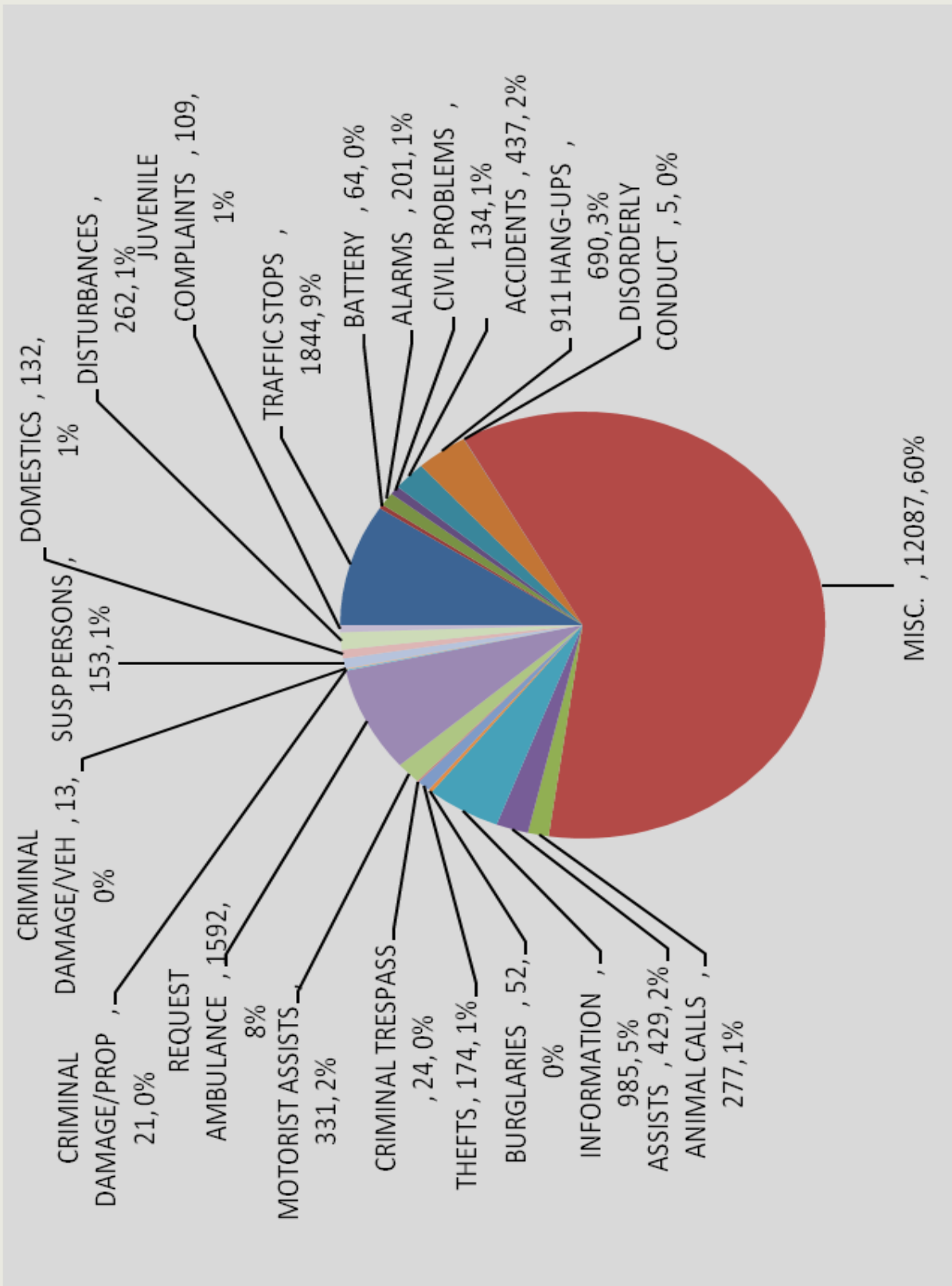
ROCHELLE POLICE DEPARTMENT TRAFFIC ACTIVITY 2015



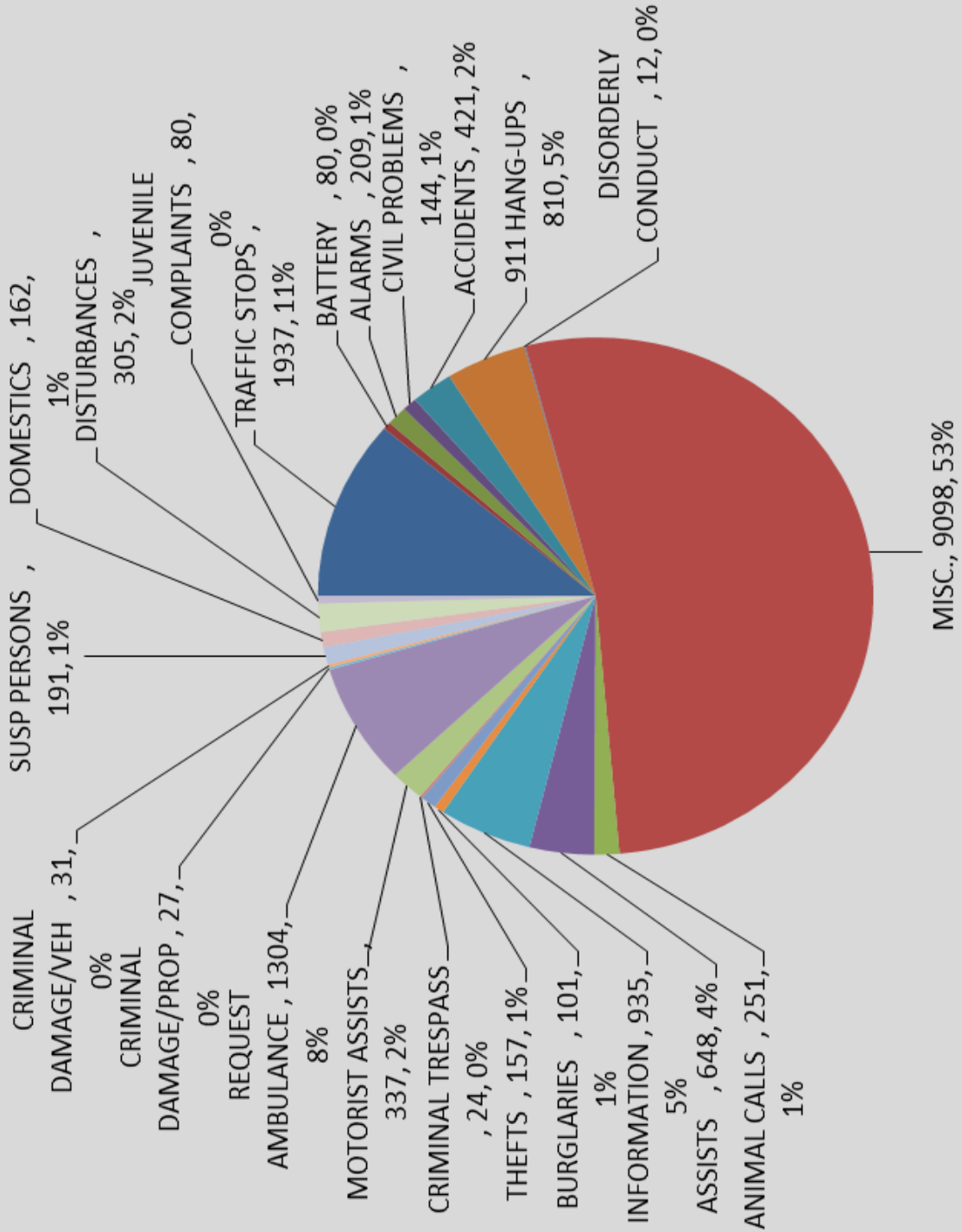
ROCHELLE POLICE DEPARTMENT ACCIDENTS BY HOUR OF DAY



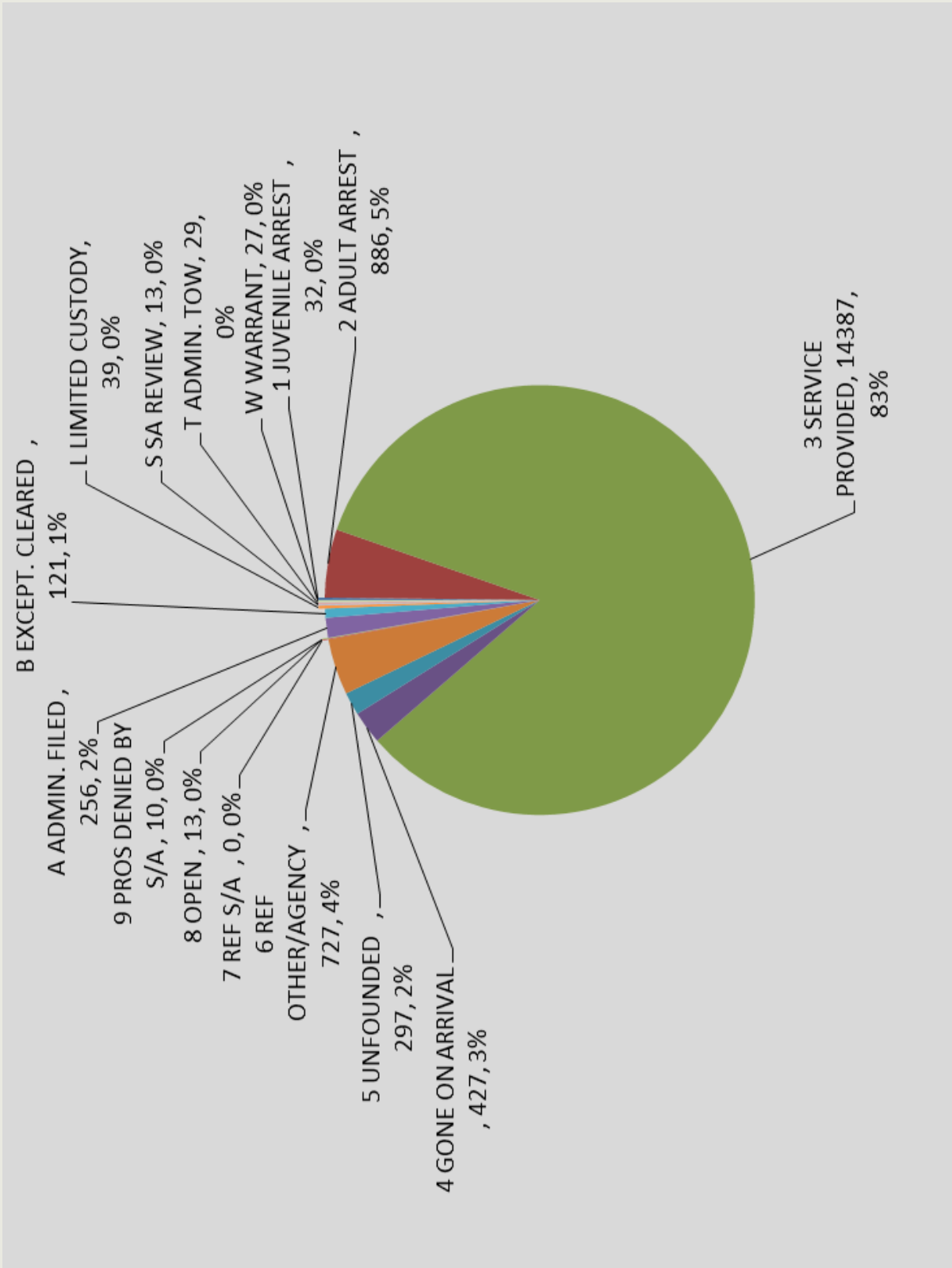
**ROCHELLE POLICE DEPARTMENT
BREAKDOWN CALLS FOR SERVICE 2014
TOTAL CALLS 20016**



**ROCHELLE POLICE DEPARTMENT
BREAKDOWN CALLS FOR SERVICE 2015
TOTAL CALLS 17246**



ROCHELLE POLICE DEPARTMENT CASE DISPOSITION 2015



Information Sought

January 6, 2015



Information sought

The Rochelle Police Department is asking for assistance in identifying the subjects seen in the photos. The male and female subjects are wanted for questioning in two retail thefts, which occurred at the Rochelle Walmart on Dec. 23 and Dec. 31. If you have information about this case, call Ogle-Lee Crimestoppers at 1-888-228-4488, or the Rochelle Police Department at 815-562-2131.

The Rochelle Police Department is asking for assistance in identifying the subjects seen in the photos. The male and female subjects are wanted for questioning in two retail thefts, which occurred at the Rochelle Walmart on Dec. 23 and Dec. 31. If you have information about this case, call Ogle-Lee Crimestoppers at 1-888-228-4488, or the Rochelle Police Department at 815-562-2131.

New Officer



New officer

The City of Rochelle and the Rochelle Police Department welcomed new officer, Ryan Kovacs, Monday morning. Kovacs was sworn in Monday morning by Rochelle City Clerk Bruce McKinney. Family members, city staff and Rochelle officers were on hand for the ceremony. Kovacs will complete field training with Rochelle Police officers, beginning that training next week. He was previously an officer with the Elgin Police Department. At right, Kovacs' mother had the honor of pinning his badge during the ceremony. (Photo by Jennifer Simmons)

The City of Rochelle and the Rochelle Police Department welcomed new officer, Ryan Kovacs, Monday morning. Kovacs was sworn in Monday morning by Rochelle City

Clerk Bruce McKinney. Family members, city staff and Rochelle officers were on hand for the ceremony. Kovacs will complete field training with the Rochelle Police officers, beginning that training next week. He was previously an officer with the Elgin Police Department.

Bond raised for Rochelle man

January 22, 2015

Bond was increased by an Ogle County judge for a Rochelle man following his arrest Sunday night.

Mario Messer, 42, of Rochelle, was arrested by Rochelle police Sunday after an altercation with officers. Officers found Messer driving a pickup truck on the Burlington Northern Santa Fe Railroad tracks just west of Caron Road near First Avenue.

He was arrested on the charges of aggravated battery to a police officer after he was apprehended and allegedly struck an officer. Other charges include resisting arrest, obstruction and driving on a suspended license.

Bond had been originally set at \$15,000 before the amount was raised to \$100,000 Tuesday.

Messer is scheduled to return to Ogle County court on Friday. He remains in jail in lieu of bond.

According to court documents, Messer has

previous felony convictions of burglary and two drug cases.

Vehicle burglaries plaguing the area

January 27, 2015

Area police agencies are dealing with a recent rash of car burglaries in Rochelle and in Stillman Valley. Rochelle police are investigating several break-ins that occurred in the 200 block of First Avenue and the 1100 block of North Seventh Street most recently. No cars were broken into, as burglars only stole from unlocked cars. On Saturday, Jan. 24 at approximately 8:45 p.m., Ogle County Sheriff's deputies received a report of several vehicle burglaries which occurred at the Stillman Valley High School. A total of seven vehicles were entered by breaking windows. The investigation determined the burglaries occurred between 7:30 hours and 8:45 p.m. Anyone with information regarding this incident is encouraged to call Ogle County Sheriff's Office at 815-732-6666 or Ogle-Lee Crime Stoppers at 888-228-4488.

Crime Stoppers pays rewards of up to \$1,000 for information leading to the arrest of a suspect in a crime.

Second arrest made in child battery case

February 1, 2015

Rochelle police made a second arrest Friday in a case involving battery to a child.

Police arrested Holley Peerboom, 23, of Rochelle, on a Class 3 felony offense of aggravated battery to a child and a misdemeanor charge of endangering the life and health of a child. Peerboom is expected to appear before an Ogle County judge this weekend to establish a bond amount.

Police arrested Chris Texas, 27, of Rochelle, earlier in the week and charged him with the felony offense of aggravated battery to a child and domestic battery. An Ogle County judge set bond at \$500,000 for Texas. He remains in jail in lieu of bond.

The victim in the case was a girl who suffered bruises to her body and had a black eye. The investigation continues by local police and the Department of Children and Family Services.

Emergency Services Personnel Honored



April 16, 2015

Shortly after the Rochelle City Council meeting was called to order on Monday evening, Mayor Chet Olson sent positive words to the families affected and extended thanks to the individuals and agencies

involved in the aftermath of last Thursday's tornado in the area.

"Our hearts and prayers and thoughts go out to the families that lost homes and other belongings," said Olson.

Olson noted that people in the community and surrounding areas, as well as groups, and organizations came from many different locations to help with relief efforts. "Hats off to all the emergency services, stemming with Ogle County Sheriff Brian VanVickle and his staff." He did an outstanding job as incident commander in organizing all of the emergency services that were put together very quickly in the last few days," said Olson.

"Thank you to all the support groups, the emergency operation center, agencies, state police, city staff, streets, police, fire , they all chipped in and handled everything," added Olson.

Rochelle Police Officer Retires



May 12, 2015

Rochelle Police Department Officer Dave Christopherson retired last week after nearly 30 years with the department. Christopherson began his career as a dispatcher before becoming

an officer with specialized training in domestic terrorism, interviews and interrogation , to juvenile officer, criminal law, traffic law, DUI enforcement, operation Valkyrie, crime scene processing, hazardous material training, railroad crossing investigation, accident investigation, domestic violence training and as a gun safety instructor.

Christopherson and his wife, Julie, have two sons, Ryan and Tyler, and have raised their family in the city limits of Rochelle for more than 30 years.

Police Week



May 14, 2015

Rochelle Mayor Chet Olson proclaimed May 10 through May 16 as Police Week at Monday's Rochelle City Council meeting. Olson presented Rochelle Police Chief Eric Higby with a signed proclamation.

In 1962, President John F. Kennedy signed a proclamation which designated May 15 as Peace Officers Memorial Day and the week in which that date falls as Police Week.

Currently, tens of thousands

of law enforcement officers from around the world converge on Washington, D.C., to participate in a number of planned events which honor those that have paid the ultimate sacrifice. The Memorial Service began in 1982 as a gathering in Senate Park of approximately 120 survivors and supporters of law enforcement. Decades later, the event, more commonly known as National Police Week, has grown to a series of events which attracts thousands of survivors and law enforcement officers to our Nation's Capital each year.

More information about Police Week can be found at www.policeweek.org.

Saturday

In conjunction with Police Week, the Rochelle Police Department will host an open house at the police department on Saturday, May 16 from 1 to 4 p.m. Activities will include a Taser demonstration at 2 p.m. and a K-9 demonstration at 3 p.m. Tours of the police department will be given as well as a gun safety demonstration, a bike rodeo (bring your bike) and car seat safety checks will be done.

Police Week Open House



May 18, 2015

The Rochelle Police Department held a community open house on Saturday afternoon in conjunction with national Police Week. A variety of events were held, including a K9 demonstration. Officer Emily Hardesty and Officer Elvis Banerji demonstrate how Don is instructed to go after a suspect.



Tours of the police department were also given, a demonstration of how officers use TASER equipment and table displays were set up to show other equipment used by the department.

Remembering a former Rochelle leader



May 31, 2015

A dedicated public servant and a loving family man with a bright smile, a hearty laugh and sense of humor seem to be the consensus when describing former Rochelle Police Chief Ken Woolbright, who passed away suddenly over a week ago.

Woolbright, who began his career with the RPD in 1979 and retired from the department in 2006, passed away on May 22.

Colleagues and friends were saddened to hear of his passing.

Rene Smith-Schwartz began her career with the Rochelle Police Department when she was hired as Woolbright's assistant.

"I didn't know a lot of his friends at that time. He had one friend, Terry Roderick, who would call in to talk to him and he would give different names all the time usually sports coaches I'd never heard of. When I would screen Ken's calls I would announce who was calling and Ken would just crack up when it was Terry using some legendary name. That's how I knew it was him [Terry]," Schwartz laughed.

Former Rochelle Police Officer Chris Cox also remembers his time with Woolbright. Cox commented on Woolbright's Facebook page shortly after hearing of his passing.

"I'm still stunned by the news of Ken. Today, he has really been on my mind. I have a lot of great memories

working with him. Man, did we laugh a lot and I loved listening to his old war stories of the good ole' days, in that raspy voice of his," Cox commented. "There was one night, when he was still a sergeant and we sat side by side in our squads talking about life. He heard the music I was listening to and told me it was crap! He started telling me that his favorite R&B artist was Sam Cooke. I never ever heard of Sam Cooke before in my life, until he mentioned his name. He started singing to me some of Sam Cooke's songs and I was like this guy has just lost his mind! Today, I downloaded some of Sam Cooke's greatest hits and have been listening "on and off all day in honor of him."

Dispatch supervisor Sandy Sullivan was proud to have worked with Woolbright for many years. "I started working with Chief Woolbright in 1996. He was always someone that I and many others looked up to," Sullivan said. "I worked with him while he was a patrolman, as he was promoted to a sergeant and then as he moved on as the chief of our department." Sullivan added that he was instrumental in making the department what it is today.

"When Chief Woolbright took office he started working on the relationship between the police department and the community, a relationship

which was greatly needed," Sullivan said "With Rob Buck as his deputy chief and the department camaraderie, the entire police department atmosphere was uplifted Chief Woolbright made sure he engaged every employee on a regular basis regardless of shift."

Sullivan said Woolbright helped foster a family atmosphere in the department. "Department socials were common," Sullivan added. "They would make sure the shifts working on holidays were fed. Not only will Chief Woolbright be missed by his family, he will be missed by his law enforcement family and the citizens of our community."



In honor of all deceased Rochelle police officers, we will be participating in the Illinois Law Enforcement Torch Run in their memory on June 10."

Current police Chief Eric Higby also worked under Woolbright and appreciates the vision he had for the future of the department.

"More than half of our current employees, including all of the supervisors, were hired or promoted by Chief

Woolbright. This type of longevity with employees speaks volumes about his vision for the department. He was instrumental in reviving our current K9 program that is still successful to this day," Higby said.

Woolbright was laid to rest at the U.S. National Cemetery in Ft. Smith, Ark., and was honored with full military rites on Thursday. Rochelle Police Sgt. Jason Bergeron and Officer Aaron Rodabaugh attended the services to represent the department at his visitation and interment at the U.S. National Cemetery and to present his family with a chief's badge engraved with his number.

Obituary

The following is Woolbright's full obituary: Kenneth Ray Woolbright, 64, of Greenwood, Ark., passed quietly into the arms of Jesus on May 22, 2015. He was born to Rayburn and Geneva Woolbright in Wynne, Ark., in 1950. He served in the army for six years, finding his calling in the military police while in Germany.

He became an Ogle County Sheriff's Deputy and found love with a police dispatcher who became his wife of 39 years. Ken joined the Rochelle Police Department in 1979. Ken blossomed as a detective with his best partner and lifelong friend, Rick Olson. They served

under Winston Brass, Chief of Police in Rochelle, and gained the respect and admiration of all those who knew them.

Professionally, they were wholly dedicated to serve and protect, but they never failed to inject humor and compassion. People whom Ken had arrested often thanked him later for helping to straighten out their lives. Ken and Rick's unique style of law enforcement was a testament to their true character. They held themselves to high standards because of their faith in the Lord and believing that to serve was paramount. Ken and Rick protected the people of Rochelle just as they did their own families.

When Ken was chosen as Rochelle Police Chief in 2001, Rick had already become the Chief of Police in Sandwich. After serving as the chief of police, Rick became Mayor of Sandwich and enlisted Ken's help as interim police chief in 2013 until a permanent replacement was hired. Ken and Rick's almost daily communication will never end; it is ingrained in the heart.

Ken was proud of his team in the Rochelle police department. Rob Buck, his assistant chief, had been a friend since he was 15 years old. Together they implemented the most approachable police department with insistence that officers walk downtown

and know who they were serving; this also allowed the community to know each officer in a personal manner. Ken's personal secretary, Rene Smith-Schwartz, along with communications supervisor Sandy Sullivan, proved invaluable to him. Their professionalism, enthusiasm and fun loving natures lifted the spirit of the department on a daily basis. Ken's family migrated to Arkansas to be nearer to Dad's advice and wisdom. Carla is honored and thankful to have been his wife for 39 years. Daughter Monica with husband Jason Freeman presented Ken with Dakotah, 18, Delaney, 17, and Mackenzie, 13. Recently Ken attended Dakotah's graduation from Bentonville High School. They reside in Bella Vista, Ark.

Son Clint and Kristin (Mosbarger) Woolbright waited a few years to give Pop his grandson Shannon, 5. Shannon spent Ken's last day on earth helping Ken make poker decisions before falling asleep, cuddled on his lap. Ken was preceded in death by his parents; two sons, Kenneth Ray Jr. and Nathaniel; and by one grandson, Noah. Ken was of the Christian faith.

A memorial service in the Rochelle/Sandwich area is planned in the near future. In lieu of flowers, cards with your memories of Ken are welcomed. Online tributes may be made at

www.ockerputmanfuneralhome.com.

Annual Torch Run set for Wednesday



June 7, 2015

The annual Law Enforcement Torch Run for the Special Olympics will be held Wednesday, June 10.

Several members of the Rochelle Police Department will receive the torch from Winnebago County and will carry it through town, passing it on to Lee County officers.

Officers will carry the torch from the area of Flagg Road and IL Route 251 and travel south, turning left onto IL Route 38 and right onto Lincoln Highway. They will travel through Rochelle's downtown area to Washington Street before jogging back onto IL Route 251 and head to Gurler Road near the Rochelle Municipal Airport.

This year, Rochelle officers will be running in honor of fellow department officers that have passed away.

The Rochelle Police Department has taken part in the Special Olympics Torch Run for many years, helping raise funds for Special Olympics.

Special Olympics is an international nonprofit

organization dedicated to empowering individuals with intellectual disabilities to become physically fit, productive and respected members of society through sports training and competition. Donations The Rochelle Police Department would like to encourage the citizens and businesses of Rochelle to take this opportunity to make a difference in the lives of more than 2.25 million athletes and their families by dropping off or mailing your contribution to Special Olympics, c/o Rochelle Police Department, 416 N. Sixth St., Rochelle, IL 61068. Please make checks payable to: Special Olympics.

If you would like more information, contact the police department at 815-562-2131.

Changes for police force coming?

"The challenge to this approach is that because sworn personnel costs represent such a large portion of the budget, it is very difficult to obtain significant savings without substantial reductions of personnel."

Alexander Weiss



June 21, 2015

There could be some big changes ahead for the Rochelle Police Department, following a recent RPD

staffing study by an independent consulting firm which, among other recommendations, is suggesting work shift changes, increasing minority recruitment and possibly reducing staff.

Members of Rochelle city council recently heard the results of a police study conducted by Alexander Weiss Consulting, LLC. The report provided a staffing and organizational analysis of the Rochelle Police Department from last year.

The report indicated that the fiscal year budget for 2014-15 for the agency was \$3,211,607, with 89 percent going to salary and benefits.

According to Weiss, the study focused on the city's public safety priorities by answering questions such as what the department does, wants to accomplish, finding better ways to do what is done now, and how many people are needed to accomplish the department's mission. Numbers

The police department reported approximately 6,000 calls for service, equating to about 16 calls per day. The peak demand for service occurred in late afternoon hours, also noting that after midnight until morning there were the fewest calls.

Weiss mentioned that there were 642 of the 9-1-1 hang-ups /non-emergency calls, which were nearly 10 percent of the total. There

were 645 request ambulance calls of which normally an officer is not dispatched, along with 100 fire alarm and fire /smoke calls. Weiss also noted there were 215 animal complaints.

In his report, Weiss noted that law enforcement agencies seek ways to provide high quality services at lower costs due to rising costs and shrinking revenues.

"In this challenging environment it is difficult to consider the options for an agency that is, by almost all measures, over-resourced," said Weiss in his report on the Rochelle Police Department. Weiss proceeds to suggest two approaches, as written in the report.

"One approach is for policy-makers to say that they are committed to maintain a large visible uniformed presence and if possible to reduce costs in other areas," noted Weiss. "The challenge to this approach is that because sworn personnel costs represent such a large portion of the budget, it is very difficult to obtain significant savings without substantial reductions of personnel."

Weiss reported a second approach, being more data-driven and a "leaner" organization that would focus on outcomes.

"Such an approach is likely to encounter stiff resistance from many stakeholders, but it is one that will arguably be

more sustainable," Weiss wrote.

Recommendations

Weiss offered a series of recommendations, seven in all, beginning with a careful consideration by the city to look at the role of the police department in service delivery.

- Weiss suggested that calls, such as animal complaints, ambulance calls and fingerprinting, as examples, could be done "more efficiently by persons other than sworn officers." Weiss referred to communities that have non-sworn community service officers or volunteers are being utilized to increase efficiency.

- Another recommendation by Weiss is for the police department to become "data-driven" in its service delivery. Weiss believes that in the Rochelle Police Department, there is limited capability for crime analysis or research and planning, suggesting there would be a benefit from the use of a management analyst, or management intern.

- Weiss also believes the department should shift to a 12 hour work schedule, assigning six officers and two sergeants to each shift to maintain the minimum staffing levels.

- Weiss offered alternatives to the investigation unit, including the elimination of the unit

and reassigning the members to patrol, leaving the primary responsibility with the officer assigned to the case.

"This would enhance uniformed staffing capacity and allow the department to adopt a more efficient approach to investigations," reported Weiss. "Given the relatively low number of serious offenses this seems like a solid approach.

- Another recommendation by Weiss is to look at the way the department uses the canine units, due to most of the services provided outside of the community. Presently there are two officers assigned to the canine program. The activities of the department's K-9 unit noted in the report include open-air sniffs, drugs or drug paraphernalia inside a vehicle, evidence recovery, demonstrations, article searches, foot searches, building searches, and school searches.

"Dogs are used in school searches but typically the high school in Rochelle is searched only once a year, thus the majority of these searches are done in other communities," reported Weiss.

- Weiss also recommended the department make an effort to recruit more minority police officers and acquire the necessary technology to allow officers to complete reports in the field.

"The practice of returning to the station to do this work is inefficient and reduces visibility," added Weiss.

- Weiss also believes that having a master police officer (MPO) might add great value to the department. Weiss said that typically an MPO is an individual who has at least eight to ten years experience on the job.

- Weiss concluded that he believes, "in general, the department should increase the use of non-sworn personnel to perform tasks currently done by sworn officers, including greater use of community service officers."

Comparisons

Citing information on the Mesa Arizona Police Department, Weiss said that they now use civilians for everything from crime scene processing to fraud investigations. Nine civilian investigators form a team who make 30 to 40 percent less money than an officer. Reportedly, in 2010 the unit handled about 50 percent of all burglary calls.

Weiss also provided information on the Albuquerque Police Department that uses Police Service Aides to assist officers on patrol. They assist with traffic accidents, misdemeanor offenses, delivery of paperwork, parking enforcement along with other duties and responsibilities. Weiss noted that his research indicated

potential cadets are allowed to learn about the department and procedures, while serving the community, earning \$10.32 per hour.

Response

Rochelle Police Chief Eric Higby said that overall, the report gives points to talk about and work from, but he realizes that the department will not adopt all of the recommendations. Topics such as changing shifts from 10 to 12 hours will also be looked into further. The department has had twelve-hour shifts in the past, as well as eight-hour shifts.

"I am open to looking at them again; however, when we ran the (12-hour shifts), we had 21 people here," said Higby.

There are currently 19 officers on staff at the Rochelle Police Department.

Higby agrees with the recommendation to acquire more administrative help, but disagrees that it should be in the form of a management analyst or intern.

"He did give a recommendation that we need administrative help, I concur with that. We definitely do. We've had an open deputy chief spot here for six years," said Higby. "I guess where we differ is, historically it has always been a sworn officer. Interns come and go. Management analyst" I don't know what you get out of that. What I

need is a sworn officer that is outside the union to help support the department."

Higby intends to formally respond to the report, communicating with the city council, probably within the next couple of weeks.

Higby also said he is not completely opposed to some repurposing or realigning of the detective unit. "I think using them to fill on patrol more to eliminate some coverage issues is a possibility," said Higby. "We can look at the actual duties as well."

Higby said there would be further discussions on the recommendations, but does not believe eliminating the detective division, as an alternative suggested in the report, would be an option.

"He (Weiss) gave us different ideas, for example for the detective division. Take a look at what their duties are, maybe tweak those, or get rid of the entire division," said Higby. In my opinion, getting rid of the entire division isn't an option for us."

Inman named Emergency Management Coordinator



August 23, 2015

Rochelle City Manager Dave Plyman announced Thursday that Rochelle Police Department Detective Terry Inman has been named the city's Emergency Management Coordinator. Inman will continue in his role as detective with the police department.

An employee in this position is responsible for planning efficient and effective management the City of Rochelle's emergency preparedness plans. Inman's first steps as Emergency Management Coordinator will be working closely with city and county emergency management officials to be sure goals are aligned and to involve more community members in disaster planning training.

Detective Inman holds a Bachelor of Science Degree in Law Enforcement Administration and a Master of Science Degree in Biosecurity and Disaster Preparedness.

He has been employed by the Rochelle Police Department for 14 years.

Thank a Police Officer Day



September 17, 2015

This year, National Thank a Police Officer Day will be recognized on Saturday, Sept. 19 in an effort to bring much needed appreciation to the men and women of law enforcement.

So far in 2015, 83 law enforcement officers have died in the line of duty.

Local residents and businesses are encouraged to show their pride and appreciation for local officers by displaying something blue use a blue light in your outdoor lights; tie a blue ribbon around the trees at your home; or post a message on your business sign. Rochelle police

The Rochelle Police Department provides full police services to the community 24 hours a day and is comprised of 19 sworn officers, two K-9 units, 11 civilian personnel and eight crossing guards.

The dispatch center serves the citizens of Rochelle with full enhanced 911 services and also serves as a backup dispatch center for the Ogle County Sheriff's Department.

Arrest made following early morning shooting

September 29, 2015

Rochelle police arrested a Rochelle man after shots were fired from a handgun early Sunday morning in the 600 block of S. Second Street.

Mario Pineda, 21, of Rochelle, was arrested on the charge of reckless

discharge of a weapon and domestic battery.

The incident began after Pineda allegedly struck a woman in the face. A short time after the incident, the female victim along with her brother returned to the residence on S. Second Street to confront Pineda. According to police reports, Pineda fired two shots into the ground outside the home during the confrontation. Pineda was arrested and transported to the Ogle County Jail. He was expected to appear before a judge Monday afternoon. No injuries were reported. The female victim was not treated. Pineda remains in the Ogle County Jail in lieu of a \$30,000 bond.

Fundraising event to honor former Rochelle police chiefs



November 12, 2015

The evening of Friday, Nov. 20 is promising to be a night to remember as three former Rochelle police chiefs are being honored at a fundraising event in DeKalb County.

The event begins at 6 p.m. at the Fox Valley Older Adult Center in Sandwich, directly across from the Sandwich Fair Grounds.

Richard Olson, Mayor of Sandwich and former

veteran member of the Rochelle Police Department, is organizing the event to establish a scholarship to assist a student in pursuit of Law Enforcement studies at Kishwaukee and Waubesa Colleges.

Olson, a 20-year veteran of Rochelle Police Department says the event is to also honor former police chiefs Winston Brass, Ken Woolbright, and Rob Buck. Having worked closely with all three, Olson says he believes this would be a great opportunity to pay homage while helping future law enforcement students in the form of a scholarship. All of them, including Olson, have taught at Kishwaukee College. "The Chief's Scholarship is a small token of remembrance in the lives of three pioneers in law enforcement in our area," said Olson. "Winston Brass, Robbie Buck, and Ken Woolbright each dedicated their lives to the service of their communities and the honor of their proud profession. There is no better trio to assist a young man or woman to follow in their footsteps to be partners of the 'thin blue line.'

Tickets are \$30, available at the Rochelle Police Department, which includes entertainment and stadium-type food such as pizza. There will be a cash bar available. Olson mentioned if anyone wishes to send a payment, they are asked to

send \$30 for each ticket to the Policeman's Benevolent Fund, 308 E. College Street, Sandwich, IL 60548

Entertainment for the event will be Chicago 6, featuring players from the 1985 Chicago Bears Super Bowl Champions, Dan Hampton, Steve McMichael, and Otis Wilson. The evening will also feature a local Blues Brothers review known as Sideshow, featuring Jake and Elwood.

There will also be an opportunity for autographs, along with memorabilia and jerseys available for sale at the event. Whether coming out to honor and share memories of three former Rochelle police chiefs, or bask in the memories of the 1985 Super Bowl Champions, or both, Olson says everyone is welcome.

"This year with the Cubs, everybody was talking about 'Back to the Future,' and the hopes of going to the World Series," explained Olson. "Go back to 1985, that's what we are going to do."

Olson acknowledged having had a great friendship and working relationship with the gentlemen being remembered at the event.

"Each understood and appreciated the need for formal education; however, life lessons, common sense and compassion were their guidance for being successful police officers," added Olson.

Adults learn some 'street smarts'



December 17, 2015

Children are taught "street smarts" early on to safely navigate the outdoors, from being taught to watch for cars and looking both ways before crossing a street, to the importance of knowing stranger danger .

Adult sometimes need to be reminded of the importance of knowing what is around them as well, most often referred to as "situational awareness," or street smarts.

Emily Hardesty from the Rochelle Police Department presented various "street smarts" tips and strategies to 25 ladies Tuesday evening as they gathered for the Rochelle Women's Group meeting.

Hardesty began her presentation by asking if anyone might have been looking at their phones as they walked from their cars

into the meeting.

"In that split second that you are looking at your phone, somebody could have come up and grabbed you, robbed you at gunpoint," began Hardesty.

Although it might have sounded like a harsh question to some, Hardesty explained the importance of knowing what is all around wherever a person might frequent, whether it would be the store, or even at the gas station.

"Part of protecting yourself is being aware of what's going on around you," said Hardesty. "When you pull into places, scan. You always need to be scanning." When exiting a store or gas station, be alert and project confidence.

Another helpful hint for parking lot safety, says Hardesty, is to look for cameras and park near them, or park near lights. Identification of a perpetrator might be easier if there are lights or a camera. Customers shouldn't hesitate to ask a store employee for assistance to their car if they are uncomfortable.

People with less than good intentions are looking for crimes of opportunity. Many experts caution shoppers to leave the parking lot immediately, avoiding the urge to look through packages, receipts or making phone calls. Other things Hardesty mentioned

include:

- Glance inside the vehicle as you walk toward it and locking the car doors upon entry

- Have your keys ready
Give yourself room from the car in front of you when approaching a stoplight, making it easier to drive away in the event of an armed robbery;
- When driving, keep anything valuable behind the driver or passenger's seat. If possible, cover with a towel, blanket or jacket. Avoid keeping your purse on the passenger seat, especially if the window is down

- Know your location in the event you need to call 9-1-1
"Don't always count on technology to plot where you are at," said Hardesty. "I called 9-1-1 from the police station just to see where it plots" I'm sitting in the police station and it plotted five blocks away."

Hardesty advised being vigilant at home, cautioning residents to check their windows to make sure screens are in place, as well as putting away ladders to avoid an easy entry for burglars. Also, in higher-incident areas, Hardesty advises installing motion lights and cameras, and putting interior lights on timers if employed at night.

Self-defense

Hardesty explained carrying items to increase the ability to defend, such as the use of pepper spray, a

pocketknife, which is legal, or a gun, and the importance of enrolling in a safety course in proper gun handling. Down Range

During the presentation, Hardesty explained there are Illinois Concealed Carry classes offered locally in Rochelle. Topics covered in the 16-hour class include firearms safety, principals of marksmanship, maintenance and function of typical handguns, legal responsibilities of being an ICC permit holder, dry fire exercises, live fire exercises, and a 30 round qualification. Cost for the class is \$150. The next class is scheduled for Saturday, Jan. 16 and Sunday, Jan. 17. For more information please contact Down Range, LLC at (630) 290-4601 or visit their Facebook page.