



Rochelle Municipal Utilities Water/Water Reclamation

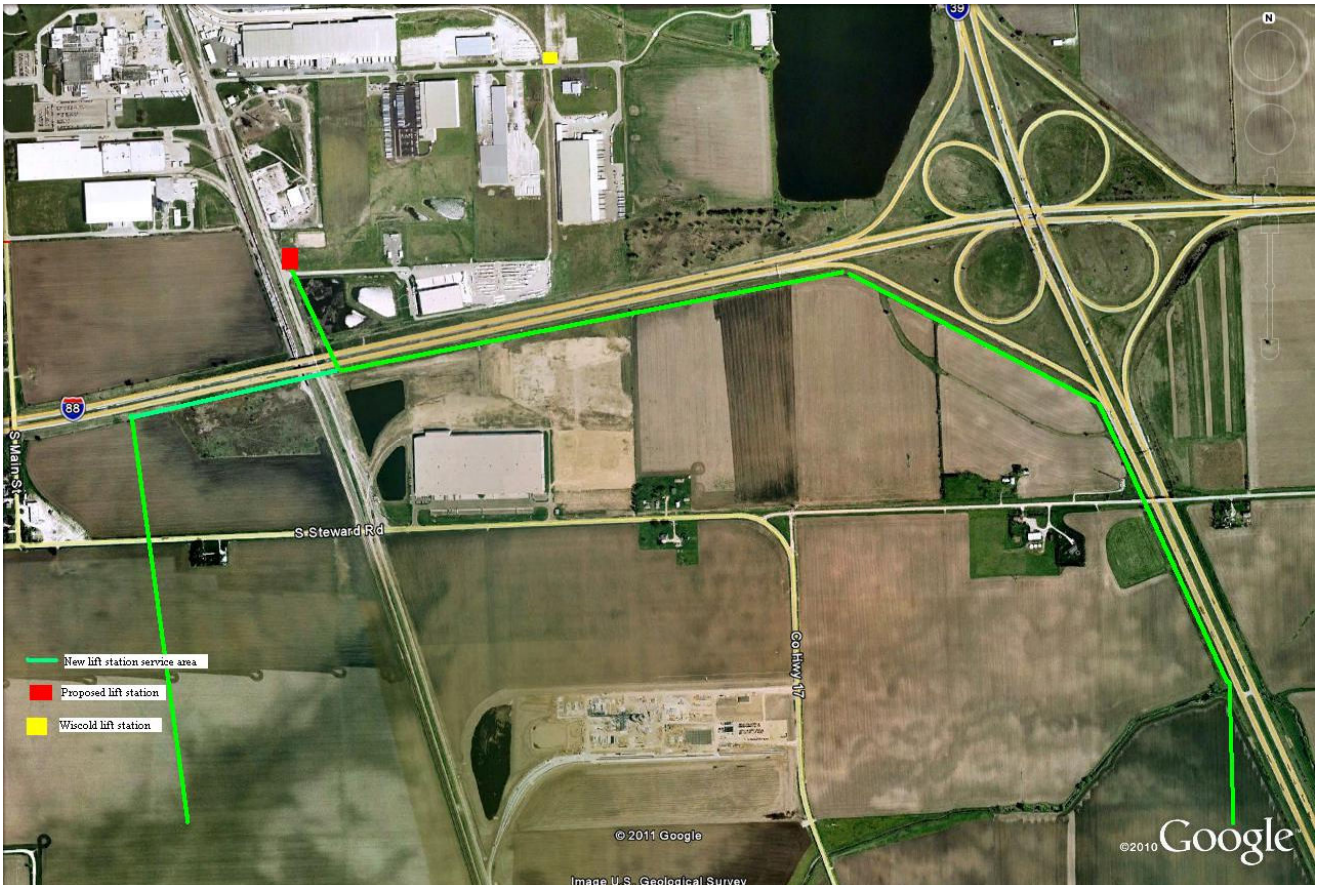
To: David Plyman

From: Kathy Cooper

Date: December 29, 2011

Re: Engineering Services, Caron Road Lift Station

The industrial area south of Interstate 88 and east of South Main Street is served by the Wiscold lift station. Capacity at the lift station is 35,000 gallons per day which is a flow that we see frequently. The 2011 Comprehensive Plan for the Water Reclamation Division addresses the need to upgrade the Wiscold lift station so the industrial area can be adequately served and further recommends the construction of a new lift station near the intersection of Caron Road and Timber Lane. The Wiscold lift station will remain in service and have the capacity to serve the businesses north of Interstate 88 and east of Caron Road. Business development in the new lift station service area has moved this project forward as a priority, and it will allow Rochelle to serve the area south of Interstate 88, including the village of Steward.



A "Request for Qualifications" was sent to Fehr-Graham and Willett Hofmann with the following questions:

1. The firm's qualifications to design and construct an 800 gpm lift station that could be upgraded in the future to a 3200 gpm lift station.
2. The firm's approach to the project.
3. The primary engineer in your firm to be assigned to the project, and that engineer's qualifications and experience in the design of a similar lift station and force main.
4. The proposed cost of the facilities and a time line for each of the following components:
 - a. Design and Permitting
 - b. Preparation of Bid Documents
 - c. Construction services
 - d. Construction observation

Following review of the proposals, Fehr-Graham was selected by staff, contingent upon Council approval, for the engineering for this project. The estimated cost for the project is:

Lift station and force main construction:	\$ 850,000
Engineer design and permitting:	\$ 61,340
Preparation of bid documents:	\$ 2,185
Construction services:	\$ 7,800
Construction observation:	\$ 25,110
Contingency:	\$ 85,000

TOTAL: \$1,031,435

The project timeline is to have the engineering completed in May 2012, bid approval in November 2012, and project completion by June 2013. At this time we have secured the grant funds needed for the project.

I recommend approval of the engineering agreement from Mick Gronewold of Fehr-Graham, so we can proceed with the design work for the project.