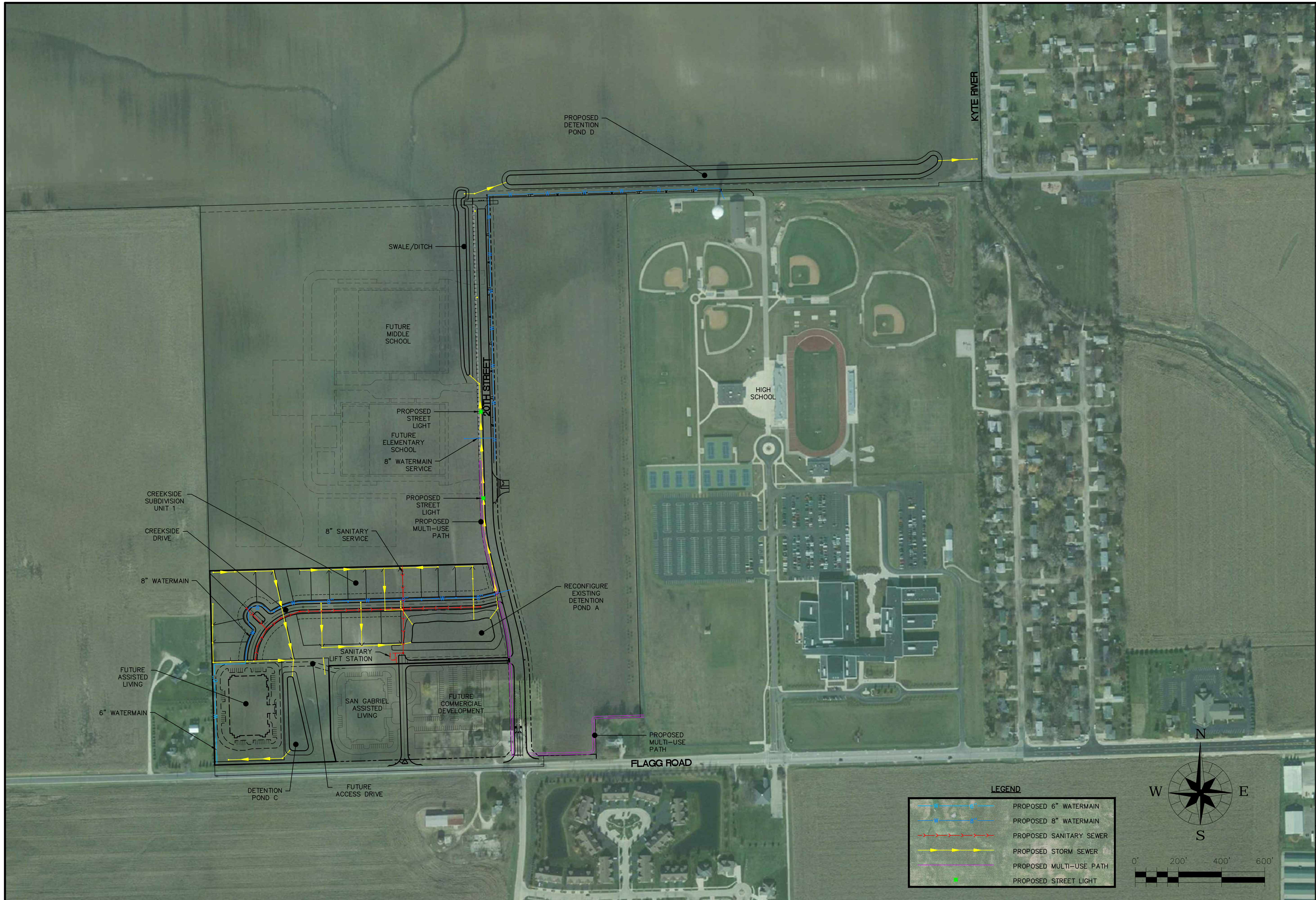
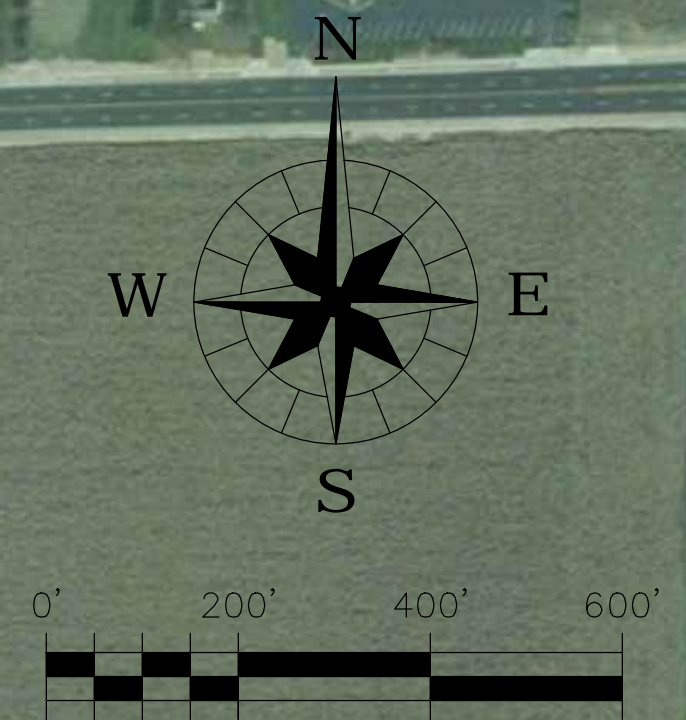


W:\Projects\20111110167_KyleCreekSide\DWG\OV110167.dwg, CIVIL, 1/19/2012 1:51:31 PM, amwbr
 UNPLT: 1/19/12 1:51:31 PM



LEGEND

	PROPOSED 6" WATERMAIN
	PROPOSED 8" WATERMAIN
	PROPOSED SANITARY SEWER
	PROPOSED STORM SEWER
	PROPOSED MULTI-USE PATH
	PROPOSED STREET LIGHT



WILLS BURKE KELSEY ASSOCIATES LTD. 116 West Main Street, Suite 201 St. Charles, Illinois 60174 (630) 443-7755		WBK	
CLIENT : CREEKSIDE LANDHOLDINGS, LLC 221 E. IL ROUTE 38 ROCHELLE, IL 61068 (815) 562-2111			
PROJECT NO. 11-0167 DATE : 07/11/2011		SHEET 1 OF 1 DRAWING NO.	
NO. DATE NATURE OF REVISION		SCALE : 1" = 200' OVI10167.DWG	
TITLE CREEKSIDE SUBDIVISION UNIT 1		OVERALL EXHIBIT	