

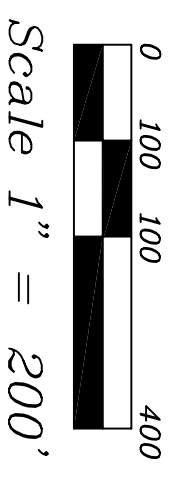
Preliminary Plat of Subdivision

PROLOGIS PARK ROCHELLE - UNIT FOUR

BEING A SUBDIVISION OF PART OF THE NORTHEAST QUARTER OF SECTION 31, THE NORTHWEST QUARTER OF SECTION 32 AND THE NORTHEAST QUARTER OF SECTION 32, TOWNSHIP 40 NORTH, RANGE 2 EAST OF THE THIRD PRINCIPAL MERIDIAN, IN OGLE COUNTY, ILLINOIS.

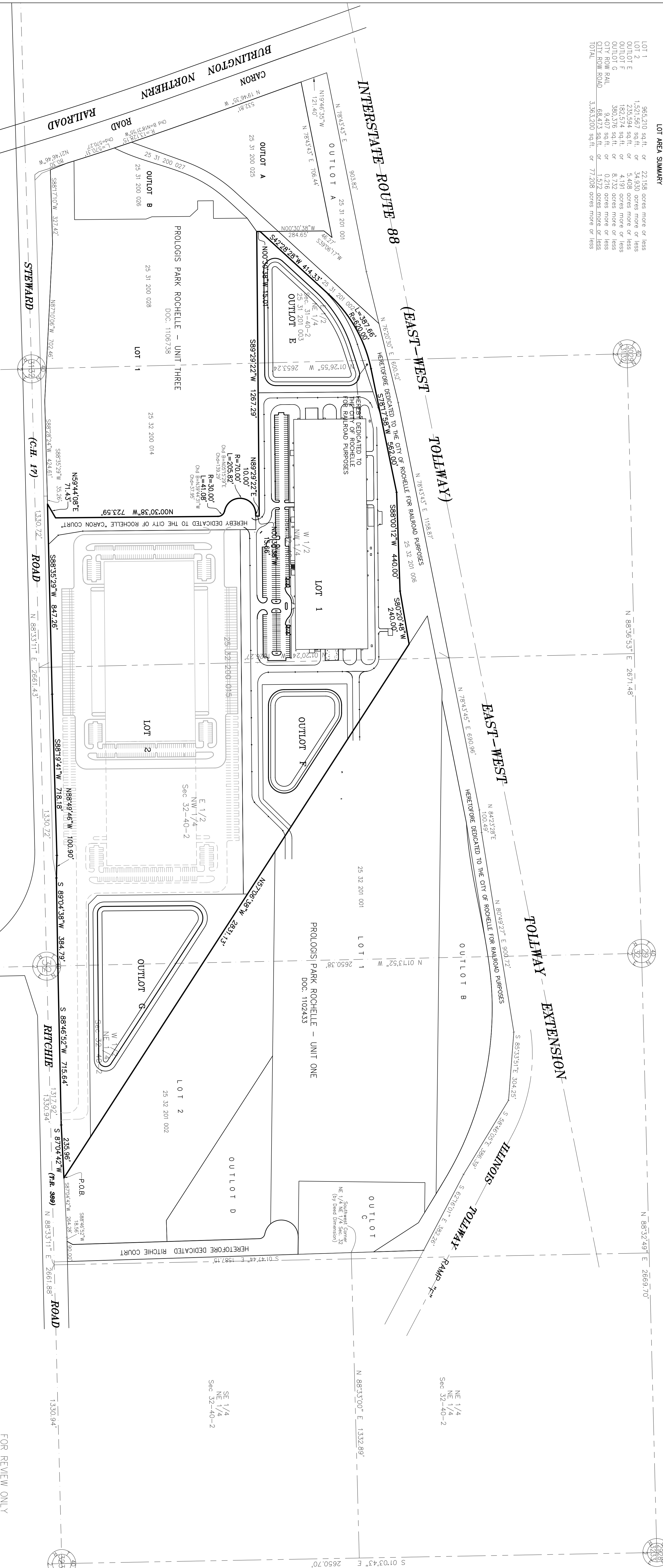
COVER SHEET

(THE DEVELOPMENT LOCATION MAP BELOW IS PROVIDED FOR ORIENTATION PURPOSES ONLY. REFER TO THE ATTACHED SHEETS 2 AND 3 OF 4 OF THIS PLAT FOR DETAILED DATA AND SEE SHEET 4 OF 4 FOR CERTIFICATES.)



Base of Bearing: NAD 83 (1997) Illinois State Plane/Coordinates West Zone brought up to Project Ground Coordinates.

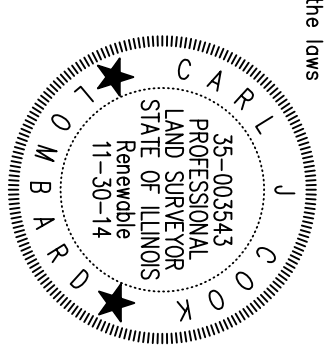
LOT AREA SUMMARY table with columns for Lot #, Area (sq ft), and Area (acres).



STATE OF ILLINOIS) SS SURVEYORS CERTIFICATE

I, Carl A. Cook, an Illinois Professional Land Surveyor, do hereby certify that at the request of the owner, thereof, I have surveyed and subdivided the following described property...

Illinois Professional Land Surveyor No. 55-003543



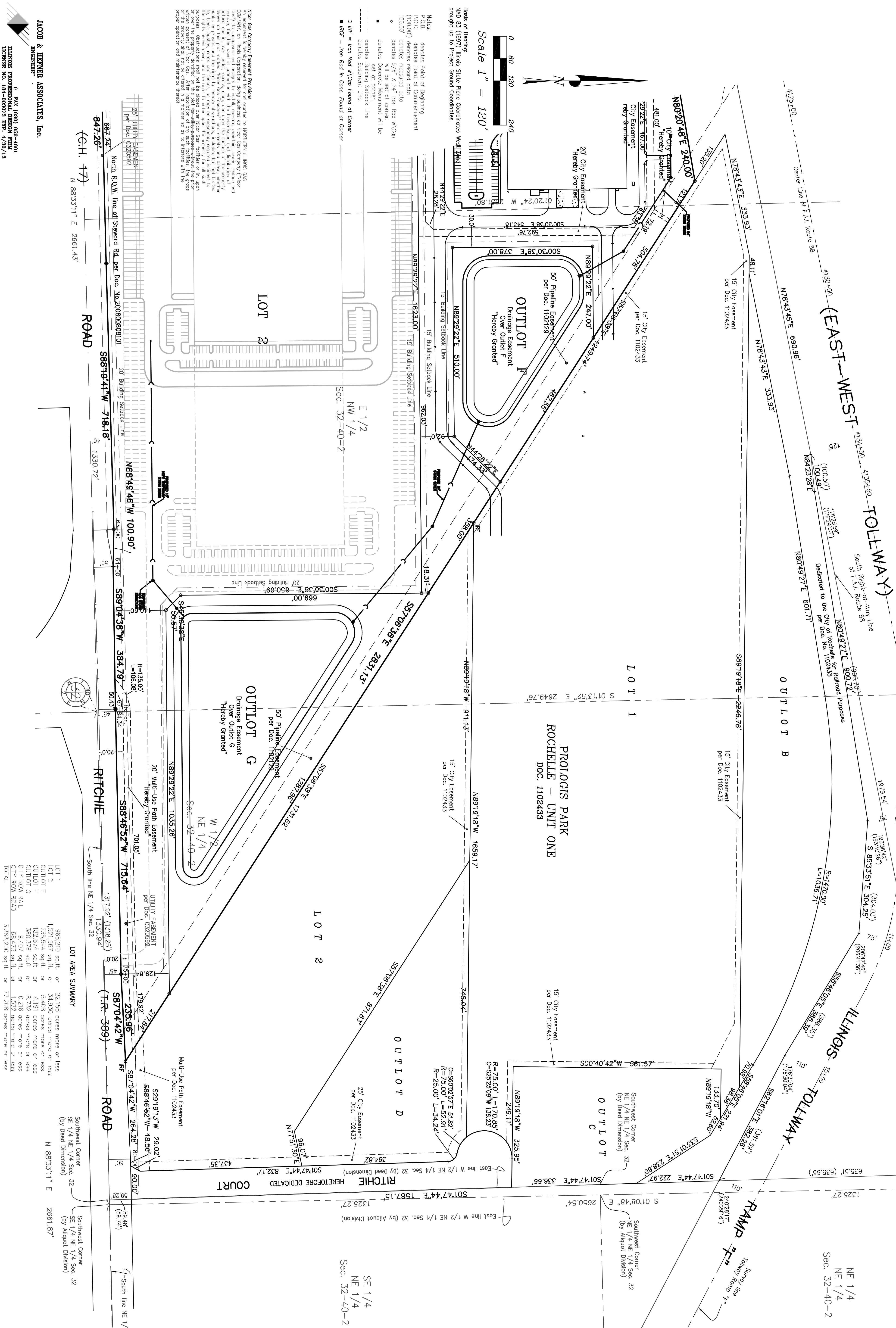
FOR REVIEW ONLY table with columns for Survey No., Ordered By, Description, Date Prepared, and Scale.

JACOB & HENNER ASSOCIATES, Inc. Surveyors and Engineers, 1810 S. Highland Avenue, Suite 100, Lombard, IL 60148.

Preliminary Plat of Subdivision

PROLOGIS PARK ROCHELLE - UNIT FOUR

BEING A SUBDIVISION OF PART OF THE NORTHEAST QUARTER OF SECTION 31, THE NORTHWEST QUARTER OF SECTION 32 AND THE NORTHEAST QUARTER OF SECTION 32, TOWNSHIP 40 NORTH, RANGE 2 EAST OF THE THIRD PRINCIPAL MERIDIAN, IN OGLE COUNTY, ILLINOIS.



JACOB & HERBER ASSOCIATES, Inc.
ENGINEERS
0 FAX (681) 642-4801
ILLINOIS PROFESSIONAL DESIGN FIRM
LICENSE NO. 184-080973 EXP. 4/30/13

LOT AREA SUMMARY

LOT	Area	Acres
LOT 1	985,210 sq.ft.	22.158
LOT 2	1,521,567 sq.ft.	34.930
OUTLOT E	2,355,594 sq.ft.	54.008
OUTLOT F	182,574 sq.ft.	4.191
OUTLOT G	380,376 sq.ft.	8.732
CITY ROW BULK	4,407 sq.ft.	0.101
CITY ROW BAL	68,470 sq.ft.	1.568
CITY ROW (80.00)	3,563,200 sq.ft.	81.208

FOR REVIEW ONLY

Survey No.:	E 1 2 9 h
Ordered By:	PROLOGIS PARK ROCHELLE - UNIT FOUR
Description:	Plat of Subdivision
Date Prepared:	November 14 2012
Prepared By:	TJ/SH
Scale:	1" = 120'

Multiple Pole Easement Provisions
The City of Rochelle shall not be responsible for maintaining the storm water detention/revention facilities shown herein on the plat or construction plans and all maintenance/repair/replacement shall be the responsibility of the landowner of the property shown on the plat.

Damage Easement Provisions
The City of Rochelle shall not be responsible for maintaining the storm water detention/revention facilities shown herein on the plat or construction plans and all maintenance/repair/replacement shall be the responsibility of the landowner or Property Owner's Association. In furtherance of the foregoing affirmative rights, the following covenants shall run with the land and be perpetual.

Multiple Pole Easement Provisions
The City of Rochelle shall not be responsible for maintaining the storm water detention/revention facilities shown herein on the plat or construction plans and all maintenance/repair/replacement shall be the responsibility of the landowner of the property shown on the plat.

Multiple Pole Easement Provisions
The City of Rochelle shall not be responsible for maintaining the storm water detention/revention facilities shown herein on the plat or construction plans and all maintenance/repair/replacement shall be the responsibility of the landowner of the property shown on the plat.

Multiple Pole Easement Provisions
The City of Rochelle shall not be responsible for maintaining the storm water detention/revention facilities shown herein on the plat or construction plans and all maintenance/repair/replacement shall be the responsibility of the landowner of the property shown on the plat.

Multiple Pole Easement Provisions
The City of Rochelle shall not be responsible for maintaining the storm water detention/revention facilities shown herein on the plat or construction plans and all maintenance/repair/replacement shall be the responsibility of the landowner of the property shown on the plat.

Multiple Pole Easement Provisions
The City of Rochelle shall not be responsible for maintaining the storm water detention/revention facilities shown herein on the plat or construction plans and all maintenance/repair/replacement shall be the responsibility of the landowner of the property shown on the plat.

Multiple Pole Easement Provisions
The City of Rochelle shall not be responsible for maintaining the storm water detention/revention facilities shown herein on the plat or construction plans and all maintenance/repair/replacement shall be the responsibility of the landowner of the property shown on the plat.

Multiple Pole Easement Provisions
The City of Rochelle shall not be responsible for maintaining the storm water detention/revention facilities shown herein on the plat or construction plans and all maintenance/repair/replacement shall be the responsibility of the landowner of the property shown on the plat.

Multiple Pole Easement Provisions
The City of Rochelle shall not be responsible for maintaining the storm water detention/revention facilities shown herein on the plat or construction plans and all maintenance/repair/replacement shall be the responsibility of the landowner of the property shown on the plat.

Multiple Pole Easement Provisions
The City of Rochelle shall not be responsible for maintaining the storm water detention/revention facilities shown herein on the plat or construction plans and all maintenance/repair/replacement shall be the responsibility of the landowner of the property shown on the plat.

Multiple Pole Easement Provisions
The City of Rochelle shall not be responsible for maintaining the storm water detention/revention facilities shown herein on the plat or construction plans and all maintenance/repair/replacement shall be the responsibility of the landowner of the property shown on the plat.

Multiple Pole Easement Provisions
The City of Rochelle shall not be responsible for maintaining the storm water detention/revention facilities shown herein on the plat or construction plans and all maintenance/repair/replacement shall be the responsibility of the landowner of the property shown on the plat.

Multiple Pole Easement Provisions
The City of Rochelle shall not be responsible for maintaining the storm water detention/revention facilities shown herein on the plat or construction plans and all maintenance/repair/replacement shall be the responsibility of the landowner of the property shown on the plat.

Multiple Pole Easement Provisions
The City of Rochelle shall not be responsible for maintaining the storm water detention/revention facilities shown herein on the plat or construction plans and all maintenance/repair/replacement shall be the responsibility of the landowner of the property shown on the plat.

Multiple Pole Easement Provisions
The City of Rochelle shall not be responsible for maintaining the storm water detention/revention facilities shown herein on the plat or construction plans and all maintenance/repair/replacement shall be the responsibility of the landowner of the property shown on the plat.