

# HOWARD **Hi** INDUSTRIES

Howard Industries, Inc.  
Utility Transformer Division  
P.O. Box 1588  
Laurel, MS 39441-1588  
Phone: 601 425 3151  
Fax: 601 649 8090

# QUOTATION

**CUSTOMER COPY**

VALIDITY: 30 DAYS  
TERMS: NET 30 DAYS  
INQUIRY: ROCHELLE MUNICIPAL

QUOTATION NO: GJ-1788  
QUOTATION DATE: 07/12/2019  
PAGE NO: 1

FOB: DESTINATION  
PRICING: FIRM FOR QUOTED SHIPMENT  
AGENT: KW ASSOCIATES

UUSCO  
395 INDUSTRIAL DR UT A&B  
WEST CHICAGO, IL 60185

Item	Qty	Description	Unit Price	Shipment ARO
ITEM 1	2	<p>PRODUCT: 3-PHASE PADMOUNT ANSI C57.12.34 DEAD FRONT SINGLE VOLTAGE KVA: 2500 KVA HV: 13800GRDY/7970 + GRD 95KV BIL LV: 480Y/277 30KV BIL TAPS: (2) 2-1/2 ABOVE &amp; BELOW OIL TYPE: MINERAL</p> <p>QUOTING HIGH CURRENT BAYONET AND ISO. QUOTING WITH A FLIP TO COVER.</p> <p>QUOTED NON EVALUATED. MEETING DOE STANDARDS. THREE PHASE, DEAD FRONT, LOOP FEED, WELLS &amp; INSERTS, BAYONET FUSING, 12 HOLE SPADE, LIQUID LEVEL GAUGE, PRESSURE VACUUM GAUGE, DRAIN VALVE, THERMOMETER, IFD. PER CUSTOMER SPEC DATED 11/15/07.</p> <p>ORDERS REQUIRING APPROVAL DRAWINGS: LEADTIMES QUOTED ASSUME THAT APPROVAL DRAWINGS WILL BE SIGNED AND RETURNED TO HOWARD INDUSTRIES WITHIN TWO WEEKS OF RECEIPT OF SAID DRAWING. SHOULD THE PROCESS REQUIRE ANY ADDITIONAL TIME BEYOND THESE TWO WEEKS, THAT ADDITIONAL TIME WILL BE ADDED TO THE QUOTED LEADTIME.</p> <p>TRANSFORMERS ON THIS QUOTATION ARE DESIGNED TO COMPLY WITH DOE EFFICIENCY REQUIREMENTS EFFECTIVE FOR COVERED TRANSFORMERS COMPLETING MANUFACTURE BEGINNING JANUARY 1, 2016.</p>	\$41,234	14-16 WKS

INCONTROLLED COPY

UNLESS VIEWED ON A PC FROM THE 'QCShare on Howardptdc Drive

LAST PAGE

SUBMITTED BY JENNIE COGHIAN

Document: 21101  
Status: L  
Archived: YES



1015 S CARON ROAD  
ROCHELLE, IL 61068

2500kva TRANSFORMER

www.anixterpowersolutions.com

Phone:  
Fax:

Quotation: U00589779.02

To: **ROCHELLE MUNICIPAL UTILITIES**  
1015 S CARON RD  
ROCHELLE, IL 61068

Issued Date: Jun 13, 2019  
Expiration Date: Jul 13, 2019

Attn:  
Phone: 8155627050  
Fax: 8155628989

Sales Contact: **Susie Titus**  
(P) 217.258.0940  
(F) 217.235.0024  
susie.titus@anixter.com

Item	CustLine	Product and Description	Quantity	Price	Unit	Extended
1		<b>TBF-2500 KVA</b> COOPER 3PH PADMTD TRANSFORMER 13800GY/7970, 480Y/277, DEAD FRONT, LOOP FEED, TAPS 2- 2.5% ABOVE & BELOW, 200A WELLS AND INSERTS, BAYONET FUSES, 12-HOLE SPADES, 1" DRAIN VALVE SAMPLER. LOSSES: NL=2262, LL=15191  DEL: 19 WEEKS	2	35,443.370	EA	70,886.74

SECTION TOTAL: \$70,886.74

QUOTE TOTAL: \$70,886.74

### Special Notes

- 1) All items are In Stock unless otherwise noted.
- 2) All item pricing on this quote is valid for thirty days unless otherwise specified.
- 3) All applicable taxes apply.

For the latest terms & conditions please visit: <https://www.anixterpowersolutions.com/site/legal/purchase-terms.html>

**Anixter Power Solutions offers the industry's most extensive and dynamic portfolio of products, services and solutions for the Public Power, investor-owned Utilities, Construction and Industrial markets.**



**WESCO®**  
ENGLEWOOD ELECTRIC

Neg #: QT-19-01579088

**To: Wesco**

Eric Pfothenhauer

**From: ABB, Inc.**

Represented By: T&D Products, Inc.

Bonnie Lubniewski

We are pleased to offer you this quote.

**Project: Englewood Electrical Supply Company / (2) 2500kVA Padmounts**

**Project: Englewood Electrical Supply Company / (2) 2500kVA Padmounts**

**General Comments and Exceptions**

- This quotation is based solely upon the provided documentation: CITY OF ROCHELLE ELECTRIC DIVISION TRANSFORMER SPECIFICATIONS REVISED 11/15/07. Anything not included within this documentation will not be included within this quotation and should not be assumed as such. It is the customer's responsibility to review the Bill of Material and advise if changes are required, these changes may result in a change in price.
- ABB Jefferson City takes exception to all documentation other than the following. All documents are provided in electronic format (.pdf) only. Standard submittal documents include the outline, nameplate, and spare parts list. Drawings in PDF format 2-D. The documents enlisted above will follow ABB standard format only, we take exception of any template or format form the customer. Transformer Manuals are available online at [www.abb.us/transformers](http://www.abb.us/transformers) - Manuals are not sent with the unit.

Witnessing testing requires an additional fee of \$5,000/unit tested and is not included with this quote. A request to witness test and applicable fees must be submitted at the time of order entry or this option will be considered waived.

Final inspection requires an additional fee of \$2,000/unit inspected and is not included with this quote. A request for final inspection and applicable fees must be submitted at the time of order entry or this option will be considered waived.

Clarification, Field/Coordination services, including all installation and training, are to be provided by others.

Shipping terms are FCA, Jefferson City MO, Freight prepaid and allowed. DAP (customer's desired shipping location) is available for an additional 2%.

Standard warranty quoted - 18 months from shipment or 12 months from energization, whichever comes first. Each additional year will be a 0.5% adder, not to exceed 5 years total. Warranty extension is not available after shipment.



**WESCO®**  
ENGLEWOOD ELECTRIC

Neg #: QT-19-01579088

Item	Alt	Qty	Description	Price Each (USD)
1		1	2500 KVA Liquid Filled Padmounted Transformer 240 V - Distribution Transformer - Inflamed City, USA (0AAE000179) PDC 9AA030400R23 01A4HLE3A15A	\$41,570.00



Neg #: QT-19-01579088

ITEM	QTY	KVA	EACH (USD)	NL	LL	Conductor	%Z
1	1	2500	\$41,570.00	2876 @ 85	14161 @ 85	Al/Al	5.75

Quoted losses are typical for reference purposes only.

**Description:**

**Type** : Liquid-Filled MTR Padmounted Transformer  
**Fluid** : Natural Ester Fluid  
**Core** : Grain Oriented Steel  
**Phase** : 3 Phase  
**Frequency** : 60 Hz  
**Average Winding Rise** : 65 °C  
**Ambient Temperature** : 30 °C  
**High Voltage** : 13800 Delta  
**High Voltage Taps** : +2 -2 2.5%  
**High Voltage BIL** : 95kV BIL  
**Low Voltage** : 480Y/277  
**Low Voltage BIL** : 30kV BIL  
**Low Voltage Neutral** : X0 bushing with ground strap  
**Feed Configuration** : Loop feed  
**Color** : Green (Munsell 7GY 3.29/1.5)

**Features (included in price):**

**TANK & CABINET**

- Dry Nitrogen Blanket
- Penta-head cabinet handle bolt
- Bolted cooling radiators (three banks) x 3

**GROUNDING**

- Two 2-hole ground pads - 1 in HV and 1 in LV x 2

**BUSHINGS**

- Loadbreak Inserts (dead front) x 6
- ANSI C57.12.34 Fig 9&11 HV bushing pattern (minimum)
- 200 amp HV bushing wells x 6
- Spade Supports
- ANSI C57.12.26 Fig 3&4a minimum stgrd LV bushing pattern
- Copper LV bushings with integral 10-hole spades x 4

**FUSES**

- Bayonet with integral cartridge fuse x 3
- Parallel oil-immersed partial range current limiting fuse x 6

**MONITORING**

- Internal Fault Detector (IFD)
- Liquid level gauge
- Pressure vacuum gauge
- Dial type thermometer



**WESCO®**  
ENGLEWOOD ELECTRIC

Neg #: QT-19-01579088

- Pressure Relief Valve

**FITTINGS**

- Drain valve and sampler

**MARKINGS**

- Arc Flash Warning Label (JC# 29C5506H01)
- Non-PCB label
- UL Listed on Nameplate
- External DANGER label
- Fuse operation warning label
- "Non-PCB" on Nameplate
- External KVA Stencil
- External Voltage Stencil

**OTHER**

- 9.5" x 17.5" Tank Handhole Cover
- 24" deep cabinet
- DOE Efficiency (2016)

Contains less-flammable biodegradable natural ester fluid with no detectable level of PCB, less than 1PPM, at the time of manufacture.

For information about natural ester fluid, go to:

<http://www.cargill.com/products/industrial/dielectric-ester-fluids/envirotemp-fr3/index.jsp>

**Lead Times:**

Drawing Submittal : 4-5 Weeks after receipt of order.  
Approval Order (Shipment) : 10-14 Weeks after return of approved drawings.  
Firm Order (Shipment) : 10-14 Weeks after receipt of order.

Quoted lead times are based on current production levels. Actual lead times are dependent on available production space at time of firm order entry and/or release to manufacturing.



Neg #: QT-19-01579088

**\*\* GENERAL TERMS AND CONDITIONS OF SALE \*\***

This quotation is effective for 30 days from 7/16/2019, unless otherwise authorized by ABB.

Unless stated otherwise in the quotation, the following terms and conditions of sale will apply.

1. Payment Terms: Payment is due in 30 days invoice date from invoice date.
2. Freight Terms: Shipment is FCA - Free Carrier.
3. Warranty: 18 months from delivery or 12 months from commissioning, whichever occurs first.
4. Terms and conditions of sale are based upon ABB Inc. General Terms and Conditions of Sale.
5. Approval Orders: Prices are valid for units released for shipment within 60 days from the initial mailing date of approval drawings (typically 2 weeks ARO). Prices are valid for quoted shipment or best available lead-time at time of release. Orders on hold pending drawing approval beyond 60 days of initial drawing date are subject to price adjustment every 30 days. Pricing will be determined at time of release for agreed upon delivery.
6. Lead times for orders subject to drawing approval will be confirmed upon receipt of approval and release to manufacturing.
7. Transformers are designed, built, and tested to ANSI/IEEE C57 Transformer Standards for distribution class transformers. No other Codes/Standards apply unless noted on quote.

**Delivery**

If scheduled delivery of Equipment is delayed by the Purchaser for more than seven (7) days, ABB may move the Equipment to a storage facility for the account of and at the risk of Purchaser whereupon it shall be deemed to be delivered. Purchaser shall reimburse seller for all costs of storage and handling incurred by seller. Storage and handling fees will be invoiced for payment on a monthly basis, until the Purchaser is able to accept delivery of the Equipment. Storage and handling fees are shown below.

**Storage Fees**

Transformer Rating	Weekly Storage Fee
750KVA and below	\$375 per week per transformer
Above 750KVA	\$425 per week per transformer

**Handling Fees**

Transformer Rating	Crane Charge Per Move
750KVA and below	\$750
Above 750KVA	\$1250

**Factory Acceptance Testing (FAT)**

- Witness Testing can be added for \$5,000 per transformer. Only two (2) transformers can be witness tested per day.
- Final Inspection can be added for \$2,000 per day of inspection. Dependent upon availability of product at time of inspection.
- Please confirm intent to witness testing and/or perform final inspection by the time of release to manufacture otherwise FAT services will be considered waived.

**Cancellation**

Fees for cancellation of an accepted order are as follows:

- 10% of total order value after approval order entry.
- 20% of total order value after initial issuance of approval drawings.
- 35% of total order value after release to manufacture or entry of firm order.



Neg #: QT-19-01579088	
-----------------------	--

- 100% of total order value if cancelled within 6 weeks from scheduled ship date.

We appreciate the opportunity to quote on this business. ABB has had many years of experience building reliable, high quality transformers and we look forward to supplying this equipment.



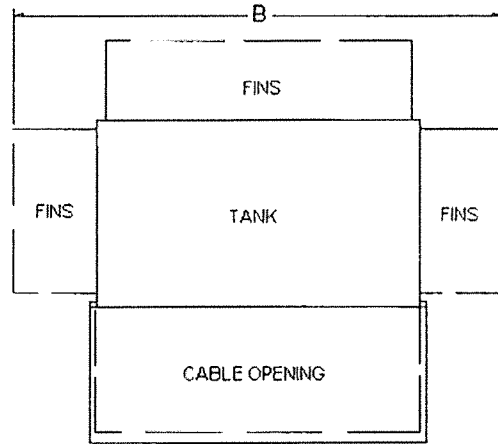
Neg #: QT-19-01579088

KVA	FEED	A	B	C	D	E	F	WT
2500	Loop (Dead)	72	100	84.8	68.8	70	24	14100

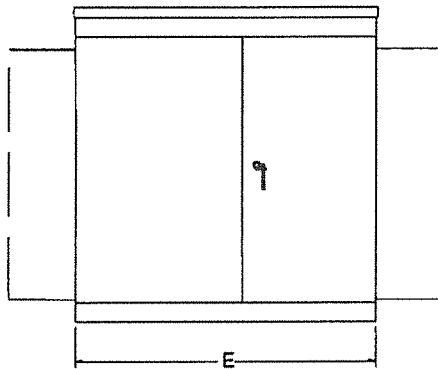
All weights and dimensions are approximate. Dimensions may change to meet specific customer requirements. Weights are in pounds. Dimensions are in inches.

Cooling fins may be required on the back and/or side of the tank if necessary. Maximum cooling fin depth is 16".

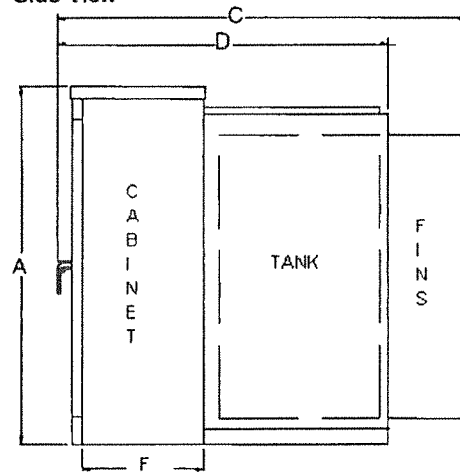
Top View



Front View



Side View



	(2) 2500kVA Padmounts	
7/16/2019	3-Phase Padmounted Transformer	ABB Inc, Jefferson City, MO