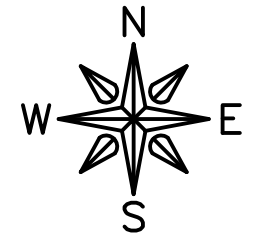


CITY OF ROCHELLE RAILROAD RIGHT-OF-WAY PLAT

PART OF SE 1/4, SEC. 32, SW 1/4, SEC. 33, T40N, R2E AND W 1/2, SEC. 4, T39N, R2E, 3rd P.M.

OGLE AND LEE COUNTIES ILLINOIS

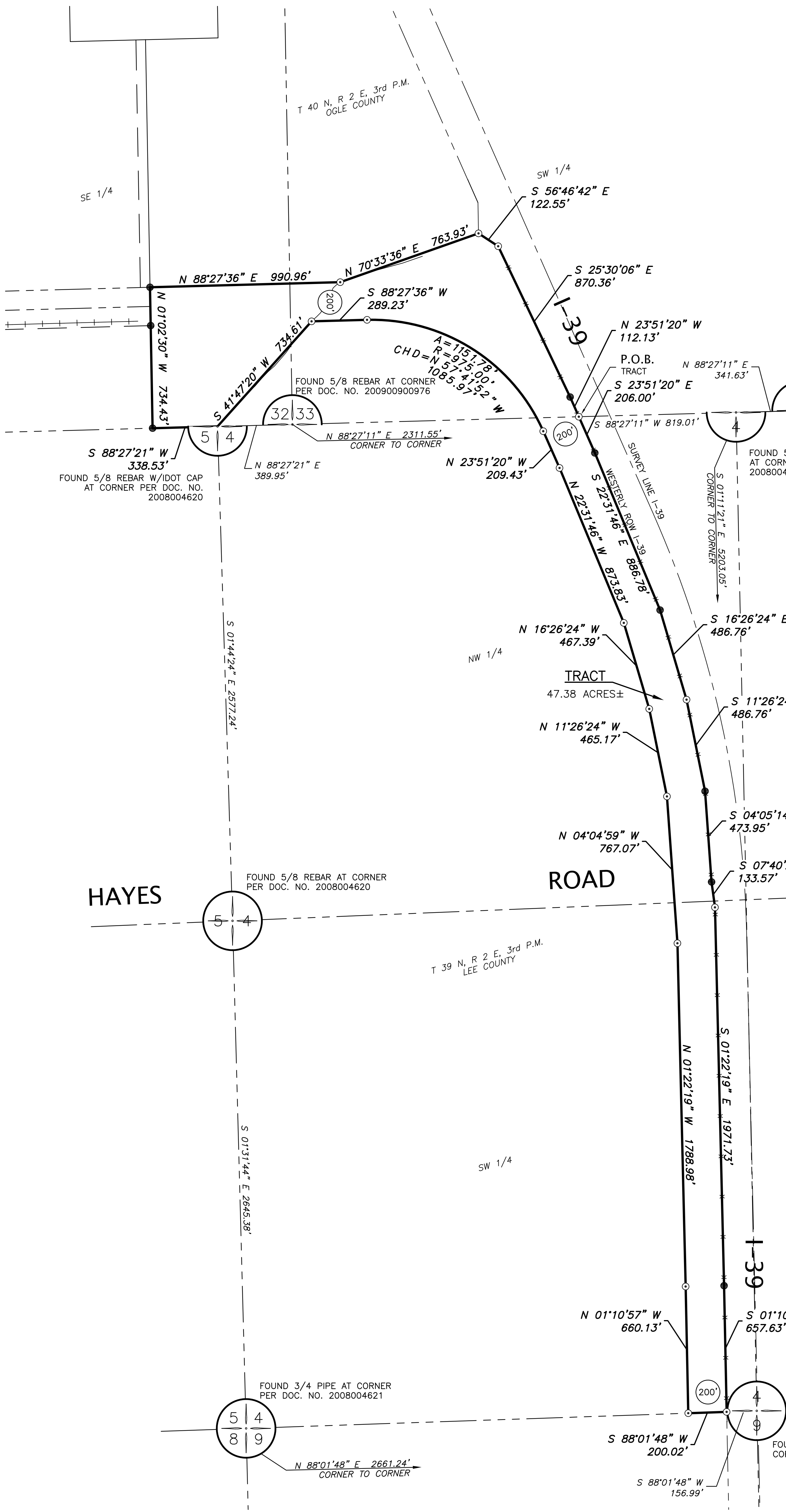


300 0 300 FEET
GRAPHIC SCALE IN FEET
NAD83 IL WEST ZONE - GRID

LEGEND

- | | |
|----|----|
| 2 | 1 |
| 11 | 12 |

 SECTION CORNER AS DESCRIBED
- FOUND MONUMENT
- SET 5/8" REBAR W/BLEU FG CAP
- SURVEY BOUNDARY
- SECTION LINE
- EXISTING RIGHT-OF-WAY
- EXISTING CENTERLINE ROAD
- EXISTING FENCE
- (60) RIGHT-OF-WAY WIDTH



DESCRIPTION:

Part of the Southeast Quarter of Section 32 and the Southwest Quarter of Section 33, Township 39 North and part of the West Half of Section 4, Township 39 North, all within Range 2 East of the Third Principal Meridian, Counties of Ogle and Lee, State of Illinois, described as follows: Beginning at the intersection of the Westerly right of way line of Interstate 39 and the North line of said West Half of Section 4, said point being South 88 degrees 27 minutes 11 seconds West (assumed bearing), a distance of 819.01 feet from the Northeast corner of said Section 4; thence South 23 degrees 51 minutes 20 seconds East on and along last named right of way line, a distance of 206.00 feet; thence continuing South 22 degrees 31 minutes 46 seconds East a distance of 886.78 feet; thence continuing South 16 degrees 26 minutes 24 seconds East a distance of 486.76 feet; thence continuing South 11 degrees 26 minutes 24 seconds East a distance of 486.76 feet; thence continuing South 04 degrees 05 minutes 14 seconds East a distance of 473.95 feet; thence continuing South 07 degrees 40 minutes 29 seconds East a distance of 133.57 feet; thence continuing South 01 degrees 10 minutes 57 seconds East a distance of 657.63 feet; thence continuing South 01 degrees 10 minutes 57 seconds East a distance of 660.13 feet; thence North 01 degrees 10 minutes 57 seconds West a distance of 660.13 feet; thence North 01 degrees 10 minutes 57 seconds West a distance of 1788.98 feet; thence North 04 degrees 04 minutes 59 seconds West a distance of 767.07 feet; thence North 11 degrees 26 minutes 24 seconds West a distance of 465.17 feet; thence North 16 degrees 26 minutes 24 seconds West a distance of 467.39 feet; thence North 23 degrees 51 minutes 20 seconds West a distance of 209.43 feet; thence North 23 degrees 51 minutes 20 seconds West a distance of 112.13 feet; thence North 23 degrees 51 minutes 20 seconds West a distance of 206.00 feet; thence North 23 degrees 51 minutes 20 seconds West a distance of 341.63 feet; thence North 23 degrees 51 minutes 20 seconds West a distance of 112.13 feet; thence North 23 degrees 51 minutes 20 seconds West a distance of 112.13 feet to the Point of Beginning, containing 47.38 Acres, more or less, with 22.99 acres in Ogle county and 24.39 acres in Lee County.

SURVEYOR'S STATEMENT:

I, Scott I. Immel, a Professional Land Surveyor in the State of Illinois, hereby state, at the request of the City of Rochelle, this survey was made on the ground under my direction, that this plat represents the facts found at the time of the survey, that this professional service conforms to the current applicable Illinois State Laws and Standards for a Boundary Survey, that the monuments were set or found at the locations indicated, and that the dimensions shown are given in feet and decimals of a foot upon said plat. I further state that I have made no independent search of the public records for easements, encumbrances, ownership or title evidence, or any other facts which an accurate and current title search may disclose, as part of the survey, but relied upon the materials supplied to me by the owner or the owner's representative.

Signed, this 21st day of June, 2018

Scott I. Immel, Illinois Professional Land Surveyor No. 35-3462
Current expiration date: November 30, 2018

PRELIMINARY

FEHR GRAHAM ENGINEERING & ENVIRONMENTAL ILLINOIS DESIGN FIRM NO. 184-003525	ILLINOIS IOWA WISCONSIN
515 LINCOLN HWY., ROCHELLE, IL 61068 P:815.562.9087	
CITY OF ROCHELLE	JOB NUMBER: 16-970
DATE: 06/21/2018 REVISED FIELD WORK COMPLETED: ___/___/2017 FIELD: ROM/TJJDRAWN: SII QA/QC: ___	SHEET NUMBER: 1 of 1