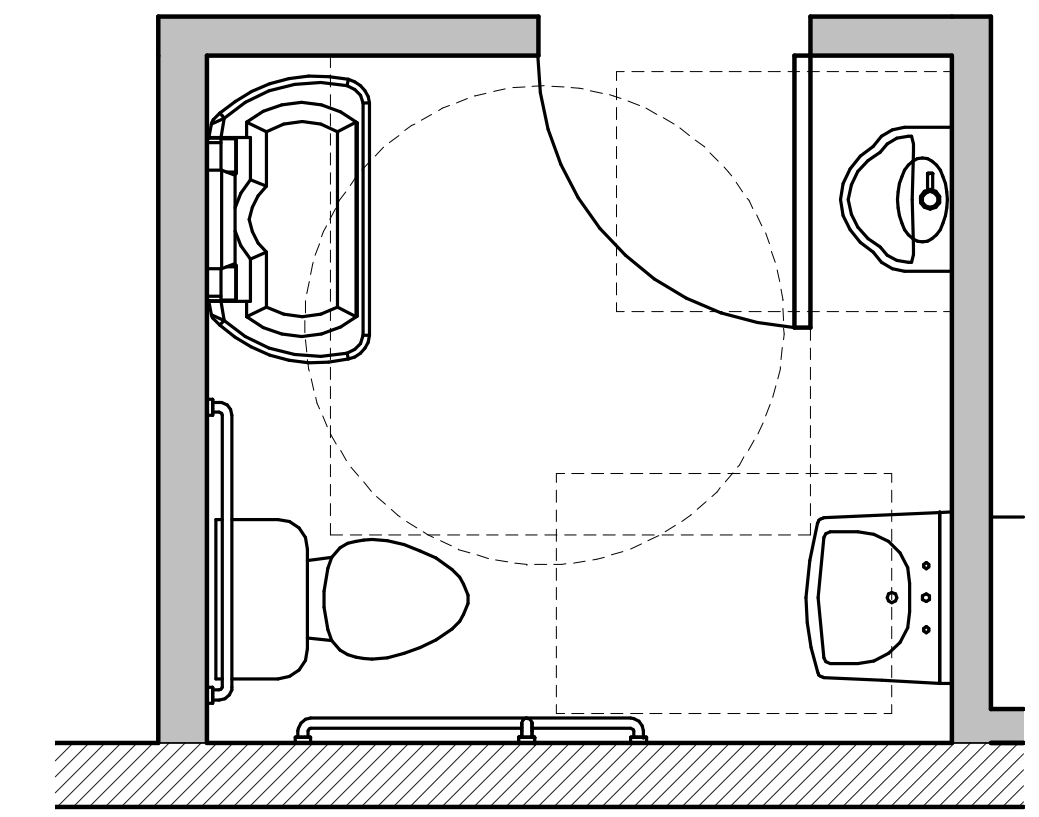
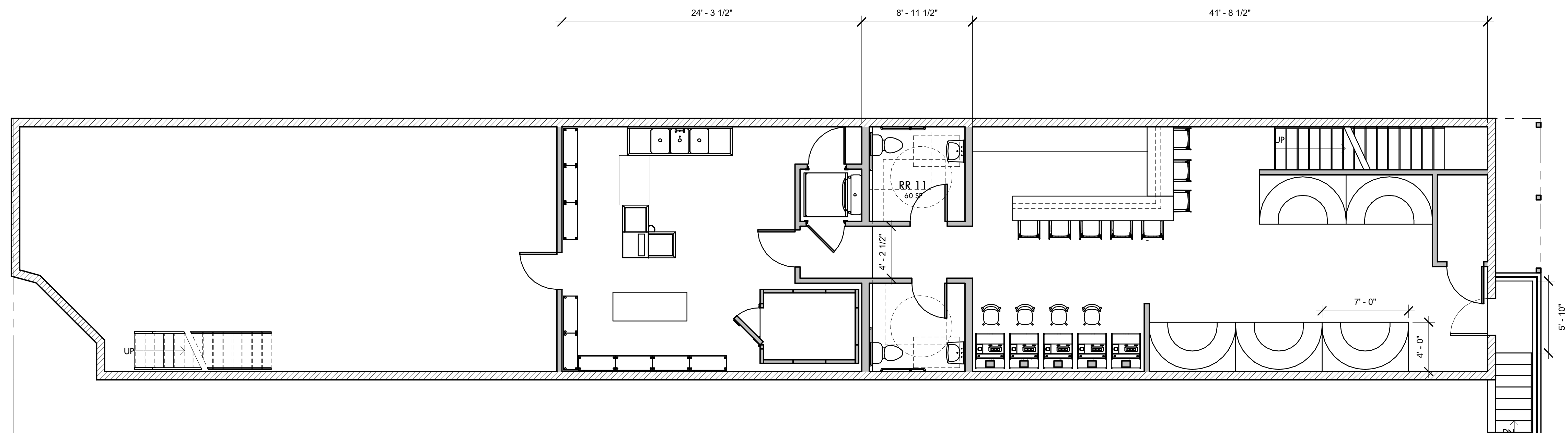


CODE REVIEW SUMMARY

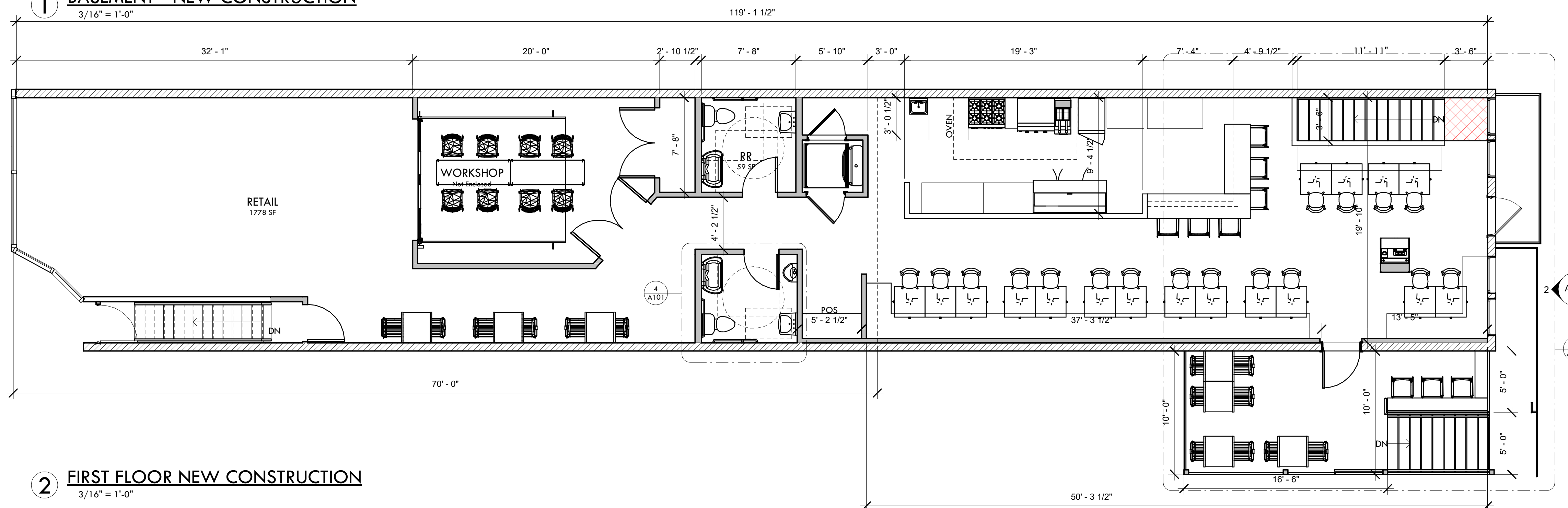
PROJECT LOCATION & TYPE		
JURISDICTION	ROCHELLE, IL.	
TYPE OF PROJECT	RENOVATION	
APPLICABLE CODES		
ZONING CODE	ROCHELLE, IL.	
BUILDING CODE	2015 ILLINOIS BUILDING CODE	
ACCESSIBILITY CODE	DOJ 2010 ADA STANDARDS	
PLUMBING CODE	2014 IDPH ILLINOIS PLUMBING CODE	
ELECTRICAL CODE	NFPA 70 - NATIONAL ELECTRIC CODE 2014	
MECHANICAL CODE	2015 MECHANICAL CODE	
FIRE SAFETY CODE	2015 IFC	
ENERGY CODE	2015 IECC	
BUILDING DATA		
CONSTRUCTION TYPE	TYPE VB	IBC TABLE 601
OCCUPANCY CLASSIFICATION	A-2 FIRST FLOOR 2/3, M- FIRST FLOOR 1/3, A-2 2/3 BASEMENT, S-2 1/3 BASEMENT, SECOND FLOOR APARTMENT R-2	
OCCUPANT LOAD		
A2 RESTAURANT	860.25/15=57.35 (58)	IBC TABLE 10004.1.2
A2 RESTAURANT KITCHEN	286.75/200=1.43 (2)	IBC TABLE 10004.1.2
M MERCANTILE STORE	1359/60=22.65 (23)	IBC TABLE 10004.1.2
A2 BASEMENT BAR	1565.3/15=104.35 (105)	IBC TABLE 10004.1.2
M BASEMENT MERCANTILE STORAGE	834.7/300=2.78 (3)	IBC TABLE 10004.1.2
R-2 RESIDENTIAL	750/200=3.75 (4)	IBC TABLE 10004.1.2
TOTAL OCCUPANT LOAD	195 OCCUPANTS	
SPRINKLERED	NS	
NUMBER OF STORIES	2	
SQUARE FEET/FLOOR		
BASEMENT	2504 SF	
FIRST FLOOR	2506 SF	
SECOND FLOOR	750 SF	
BUILDING TOTAL AREA	5760 SF	
CONSTRUCTION REQUIREMENTS		
STRUCTURAL FRAME	0 HOUR	
EXTERIOR BEARING WALLS	0 HOUR	
INTERIOR BEARING WALLS	0 HOUR	
FLOOR/CEILING	0 HOUR	
ROOF/CEILING	0 HOUR	
MEANS OF EGRESS		
EXIST ACCESS TRAVEL DISTANCE		
A-2	250 FEET WITH SPRINKLER	IBC TABLE 1017.2
S-2	400 FEET WITH SPRINKLER	IBC TABLE 1017.2
EGRESS WIDTH		
STAIRWAYS (.3" PER OCCUPANT...)	REQUIRED	
EXIT DOOR WIDTH (.2" PER OCCUPANT W/ SPRINKLER)		



4 FIRST FLOOR - RESTROOMS
1/2" = 1'-0"



1 BASEMENT - NEW CONSTRUCTION
3/16" = 1'-0"



2 FIRST FLOOR NEW CONSTRUCTION
3/16" = 1'-0"