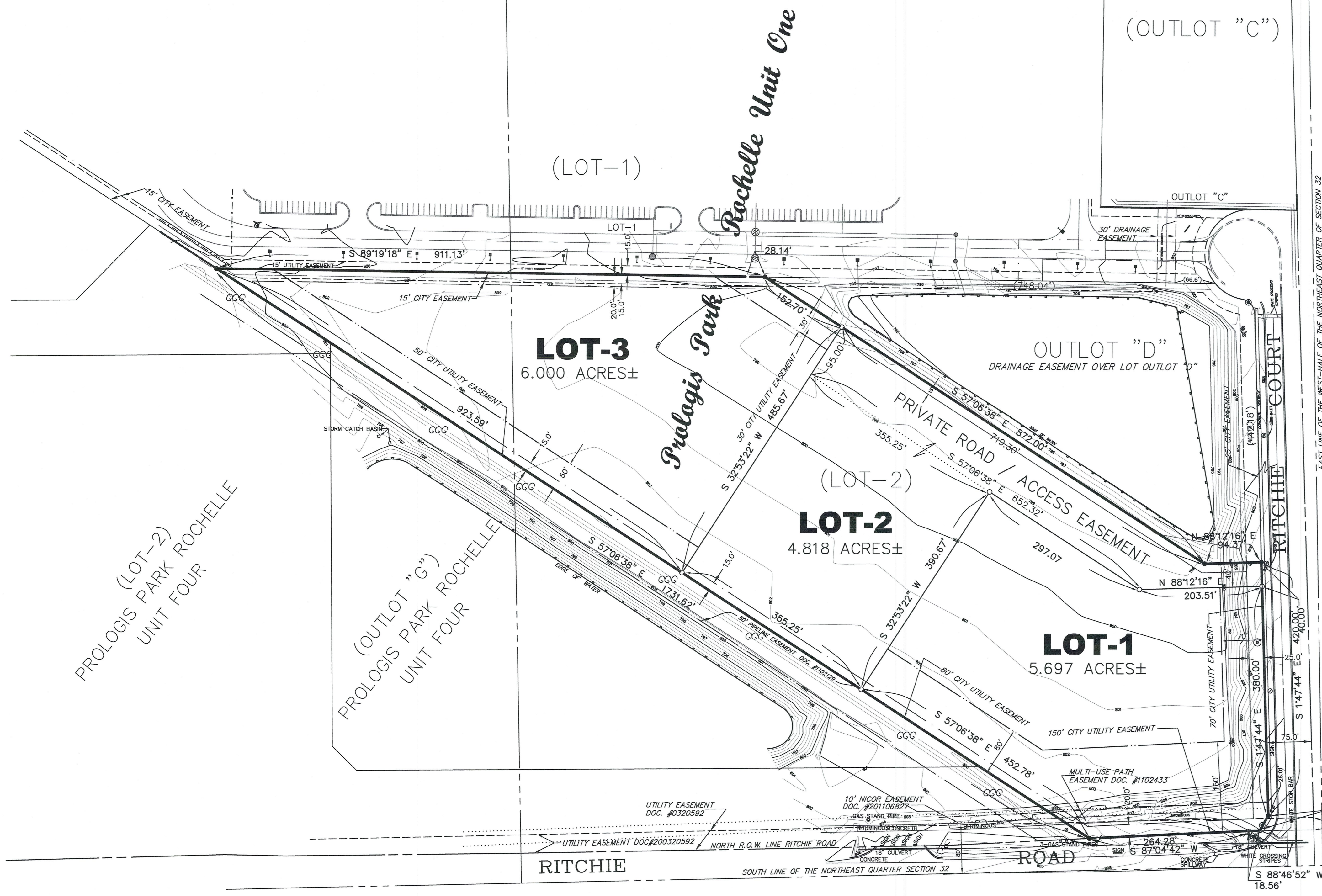


PRELIMINARY PLAT OF - NOT FOR RECORD
"Electric Park Subdivision"
A SUBDIVISION OF LOT 2 OF PROLOGIS PARK ROCHELLE UNIT ONE
PART OF THE NORTHEAST QUARTER OF SECTION 31
THE NORTHWEST QUARTER OF SECTION 32 AND THE
NORTHEAST QUARTER OF SECTION 32
TOWNSHIP 40 NORTH RANGE 2 EAST
OF THE THIRD PRINCIPAL MERIDIAN
OGLE COUNTY, ILLINOIS
AUGUST 2020



LEGAL DESCRIPTION

OF PROPERTY DESCRIBED AS: Lot 2 (2) in Prologis Park Rochelle – Unit One (1) being a subdivision of part of the Northeast Quarter (1/4) of Section 31, the Northwest Quarter (1/4) and the Northeast Quarter (1/4) of Section 32, Township 40 North, Range 2 East of the Third Principal Meridian, as recorded in Plat File E on page 1 as Document No. 11002433 in the Recorder's Office of Ogle County, Illinois, all situated in the Township of Dement, the County of Ogle and the State of Illinois.



LEGEND

- BOUNDARY OF PROPERTY
- SECTION LINE
- FENCE LINE
- ROAD RIGHT-OF-WAY LINE
- BUILDING SETBACK LINE
- UTILITY EASEMENT LINE
- GAS LINE
- CATCH BASIN
- CURB INLET
- STORM MANHOLE
- SANITARY MANHOLE
- FIRE HYDRANT
- WATER VALVE
- GAS VALVE
- TELEPHONE RISER BOX
- POWER POLE
- POWER POLE WITH GUY LIGHT
- FOUND STONE
- FOUND RAILROAD SPIKE
- FOUND MONUMENT
- SET 5/8" IRON PIN
- SET RAILROAD SPIKE
- SET P.K. NAIL
- DEEDED / PLATTED DISTANCE
- AS MEASURED

| | | |
|---|----------------------------|---------------------------|
| SURVEY-TECH A DIVISION OF C.E.S. INC. PROFESSIONAL DESIGN FIRM LICENSE NO. 184-001260 104A MAPLE COURT ROCHELLE, ILLINOIS 61068 (815)-562-8771 FAX: (815)-562-6555 | | |
| DATE: 7-27-2020 | SCALE: 1" = 100' | DRAWN BY: DEW REVISED: |
| CITY OF ROCHELLE | | |
| FB: OGLE-GPS ACAD: S37819-SUB-7-22-20 | DEMENT TWP. OGLE COUNTY | FILE NUMBER: S378-19 |