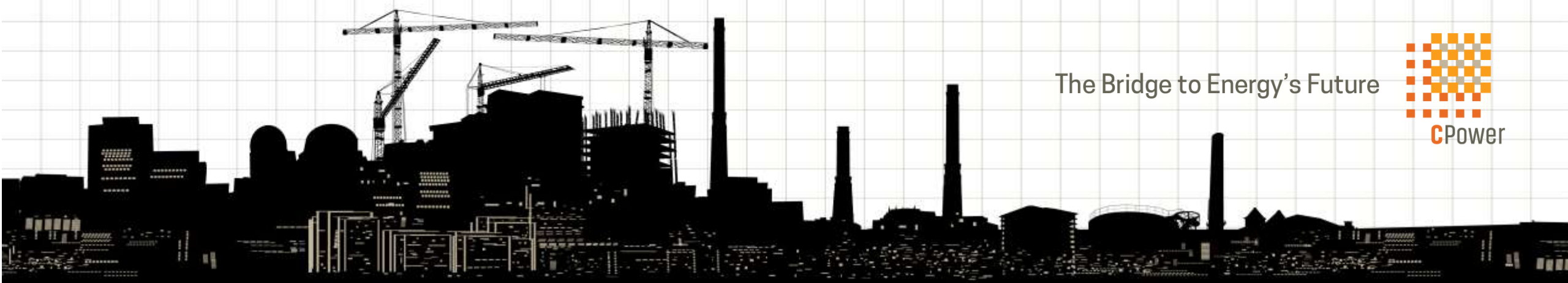


# City of Rochelle: PJM DR Registrations

2021 Registration & Future Partnership w/ CPower



The Bridge to Energy's Future



# CPOWER STORY

## OUR ROOTS IN DEMAND-SIDE MANAGEMENT



EE Team Expansion



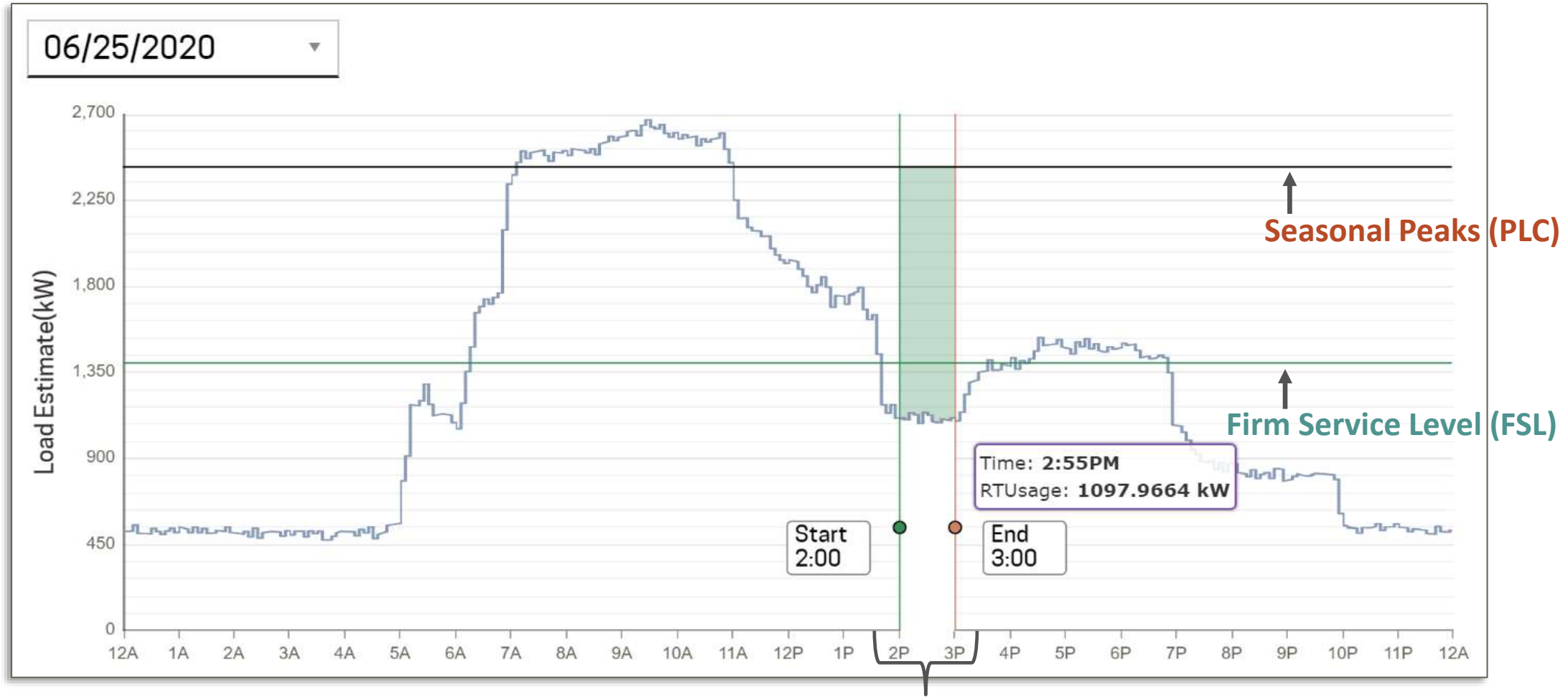
### National Curtailment & Energy Management Capabilities


The Bridge to Energy's Future



# What is Demand Response?

## Event Participation from the CPower Dashboard



Event Window/Test Event

The Bridge to Energy's Future



CPower



# PJM Emergency Response Capacity Performance Program (CP)

Demand response program with summer and winter curtailment (kW) amounts.

Participation from current process load shifts, shutdowns or curtailment plans



The Bridge to Energy's Future

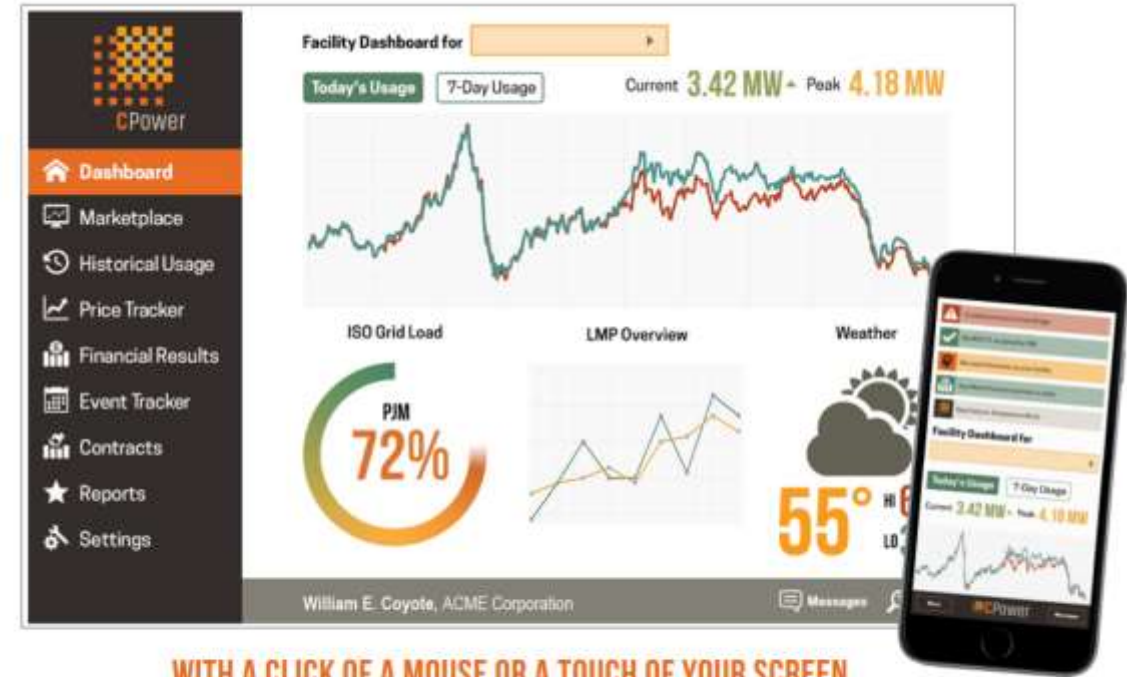


# Asset Management Tools

## CPower App & Link and More

### MANAGING COMPLEXITY WITH CONTEXT

- Full functionality on your desktop or mobile device
- Link to your independent system operator (ISO) and set your bids in synchronized, day-ahead, and real-time markets quickly and easily
- Monitor your energy consumption levels and learn to make effective energy management decisions in near real time
- Easily set bids and participation schedules
- Combined with CPower Link, you can leverage ADR (automated demand response) to participate in programs and earn revenues with less resources or business interruption
- CPower systems also support fast acting programs requiring deterministic communications, control, and telemetry in real-time



WITH A CLICK OF A MOUSE OR A TOUCH OF YOUR SCREEN,  
CPower ALLOWS YOU TO ACCESS ALL VITAL USAGE  
AND LOAD INFORMATION QUICKLY AND INTUITIVELY.

CPower |  Link



\*\*Optional Equipment, unless site does Not have Interval meter

The Bridge to Energy's Future



# 2021-2022 PJM Capacity Performance

Revenue forfeiture for non-compliance capped at the annual projected revenue amount (no “out of pocket” penalty)

**Summer: June through October and the following May**

- 7 days/week between the hours of 10:00 am – 10:00 pm

**Winter: November through April**

- 7 days/week between the hours of 6:00 am – 9:00 pm

**Emergency Events History: None since 2005**

- 12-hour event max duration in the summer & 15-hour max duration in the winter
- Thirty (30) Minute Response (unless 1-or-2-hour Exemption is granted)
- 100 kW minimum commitment
- One (1) Hour Test Event minimum, if no actual PJM-initiated events are called
- Events outside of parameters above will be communicated, but are voluntary

# City of Rochelle: Sample DR Incentives

Estimates based on Site Peaks 2,000/2,000kW

Participation Year	Seasonal Peaks kW	Summer FSL kW	Winter FSL kW	Annual Customer Payment	Avg. Quarterly Payment
2021/22	2000/2000	1000	NA	\$ 23,582	\$5,931
2021/22	2000/2000	500	NA	\$ 37,076	\$ 9,304



# CPower Energy Efficiency

Found kW Incentives from EE projects in addition or in absence of Utility Rebate programs.



The Bridge to Energy's Future



# CPower Energy Efficiency Incentives

Getting Paid *Revenue* On Top of the *Savings* You Already Receive

**What is PJM EE:** The permanent reduction of electrical demand through installing energy efficient systems, improvements or upgrades in equipment or devices.

## Types of Projects



**Lighting**



**HVAC**



**Process Improvements**



**Green/LEED Building**



**VFDs**

Installation Period	Project Fully Installed by June 1 of:	Remaining Eligible Years
June 2019 – May 2020	2019	2021/22, 2022/23, 2023/34
June 2020 – May 2021	2020	2021/22, 2022/23, 2023/24, 2024/25
June 2021-May 2022	2021	2021/22, 2022/23, 2023/25, 2025/26
June 2022-May 2023	2022	2022/23, 2023/24, 2025/26, 2026/27

# Energy Efficiency Program Parameters



<b>Minimum Size</b>	No Minimum: Cost to Recover
<b>Compensation</b>	\$/kW rates based on zone and enrollment years
<b>Compliance Period</b>	Project must be able to be measured to show demand reduction between the hours of 2 pm – 6 pm, Jun – Aug excluding weekends and NERC holidays. Starting Jun 2020 enrollments, projects will also require permanent load reductions during Jan – Feb, 7 am – 9 am and 6 pm and 8 pm
<b>Enrollment Deadline</b>	30 business days prior to Jun 1, (typically around May 1)*
<b>Measurement and Verification (M&amp;V)</b>	Verification of average load reduction during PJM peak

## Qualifying projects include:

- Lighting
- Refrigeration
- HVAC
- Motors
- Variable-frequency Drives (VFDs)
- Weatherization/Building Envelope
- LEED/Green Building
- Industrial Process Improvements
- New construction projects

## Non-Qualifying projects include:

- Dispatchable Resources
- Load-shifting
- Behavior change, programmable thermostats
- Solar, wind, cogeneration
- Fuel switch (conversion to natural gas)

The Bridge to Energy's Future



# THE **Current**

Stay ahead of the energy curve with CPower.

[www.cpowerenergymanagement.com/knowledge](http://www.cpowerenergymanagement.com/knowledge)



# Thank You

Kellen Bollettino  
(219) 213-8277

[Kellen.Bollettino@cpowerenergymanagement.com](mailto:Kellen.Bollettino@cpowerenergymanagement.com)

